

DIN 1.0/2.3 / DIN 1.6/5.6 / Type 43 series

R118 / R120 / R129 / R214

RADIAL 
The next conneXion

	Pages
DIN 1.0/2.3	
Introduction	14-4
Interface	14-4
Characteristics Eco	14-5
Plugs Eco	14-5
Jacks Eco	14-6
Receptacles Eco	14-6
Panel drilling	14-6
DIN 1.6/5.6	
Introduction	14-7
Interface	14-7
Characteristics	14-8
Characteristics Eco	14-8
Plugs	14-9
Jacks	14-10
Receptacles	14-10 to 14-11
Adapters	14-11
Panel drilling	14-11
Type 43	
Introduction	14-12
Interface	14-12
Characteristics	14-13
STANDARD DENSITY	
Plugs	14-13
Sockets	14-14
Receptacles	14-14 to 14-15
HIGH DENSITY	
Plugs	14-15
Sockets	14-16
U links	14-16
ULTRA HIGH DENSITY	
Plugs	14-16
Sockets	14-17
Panel drilling	14-17

INTRODUCTION



50Ω	DC - 10 GHz DC - 4 GHz (Eco)
------------	---

GENERAL

- Standard coaxial connectors
- Comply with CECC and IEC standard
- Two interface system: screw-on and slide-on

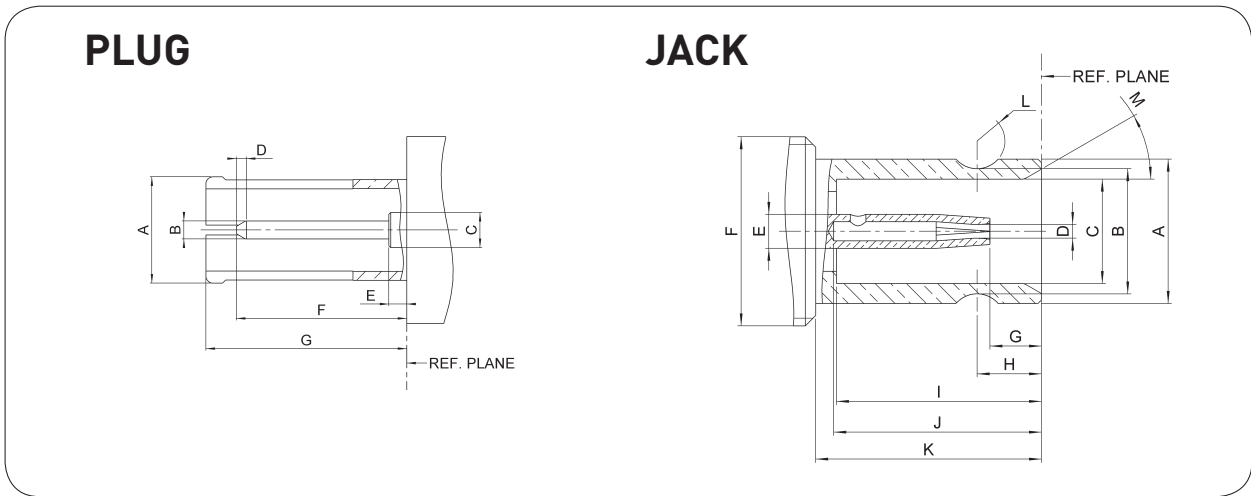
APPLICABLE STANDARDS

- DIN 47297
- CECC

APPLICATIONS

- Civil and military telecommunication

INTERFACE



Letter	mm		inch	
	min.	max.	min.	max.
A DIA	Diameter to meet gauge test requirements			
B DIA	0.475	0.52	.018	.020
C DIA	1 nominal		.039 nominal	
D	-	0.4	-	.015
E	-	1.15	-	.045
F	-	5.5	-	.217
G	5.4	5.7	.212	.224

Letter	mm		inch	
	min.	max.	min.	max.
A DIA	4.03	4.15	.158	.163
B DIA	3.525	3.6	.139	.142
C DIA	3	3.06	.118	.120
D DIA	Diameter to meet gauge test requirements			
E DIA	1 nominal		.039 nominal	
F DIA	M6 x 0.5 Slide M5.5 x 0.5 Screw + Slide			
G	1.15	1.75	.045	.069
H	1.8	1.9	.071	.075
I	5.8	5.9	.232	.228
J	5.5	-	.216	-
K	6.4	6.5	.252	.256
L RAD	0.8		.031	
M	28°	32°	28°	32°

R118A XXX XXX - SCREW-ON and R120A XXX XXX - SLIDE-ON

Test/characteristics	Values/remarks
----------------------	----------------

ELECTRICAL CHARACTERISTICS

Impedance	50Ω
Frequency range	DC - 4 GHz
V.S.W.R.	1.35 max
Test Voltage	750 Vrms
Operating Voltage	250 Vrms
Insulation resistance	200 mΩ min

MECHANICAL CHARACTERISTICS

Durability	100 matings
------------	-------------

ENVIRONMENTAL CHARACTERISTICS

Temperature range	-40°C to + 85°C
-------------------	-----------------

MATERIALS AND PLATING

	Materials	Platings
Coupling nut	Brass	Nickel
Body	Brass	Nickel
Male center contact	Brass	Gold
Female center contact	Beryllium copper/Bronze	Gold
Insulator	PTFE/Polypropylene	

PACKAGING/MOQ

Packaging/MOQ	100 pieces bulk/MOQ 1000 pieces unit packaging/MOQ 100 pieces
---------------	--

PLUGS

STRAIGHT PLUGS CRIMP TYPE FOR FLEXIBLE CABLES

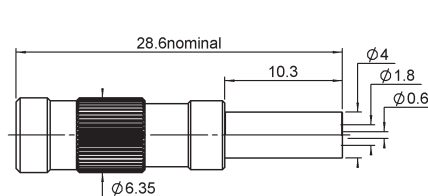
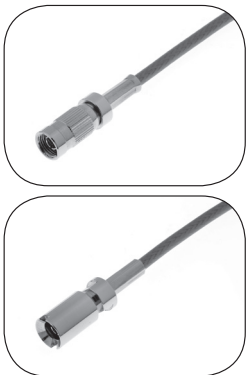


Fig. 1

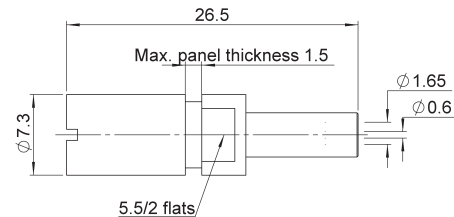


Fig. 2

Cable group	Cable group dia.	Part number	Fig	Quantity per Pack	Minimum order quantity	Note
RG174/RG316/RD316	2.6/50	R118A 074 215	1	100 pieces	1000 pieces	Screw-on
		R120A 074 215	2			Slide-on

To download data sheets and assembly instructions, visit www.radiall.com & enter the part number in the Search box.
Bold part numbers represent products typically in stock & available for immediate shipment.
 See page 8 and 9 for packaging information.

JACKS AND RECEPTACLES

STRAIGHT BULKHEAD JACKS CRIMP TYPE FOR FLEXIBLE CABLES

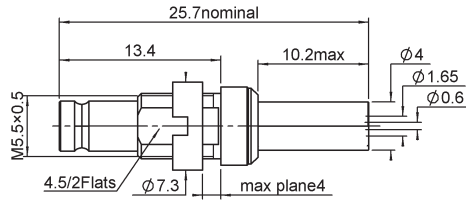


Fig. 1

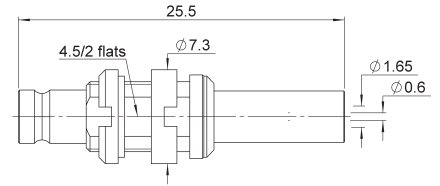


Fig. 2

Cable group	Cable group dia.	Part number	Fig	Panel drilling	Quantity per Pack	Minimum order quantity	Note
RG174/RG316/RD316	2.6/50	R118A 311 215	1	P03	100 pieces	1000 pieces	Screw-on
		R120A 311 215	2				Slide-on

PCB FEMALE RECEPTACLES

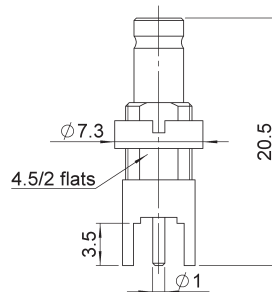
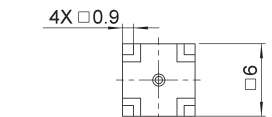
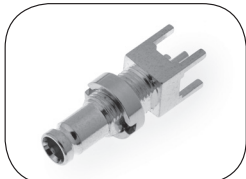


Fig. 1

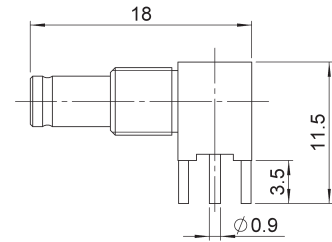
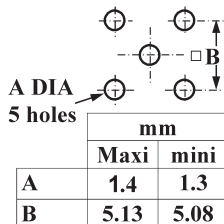


Fig. 2

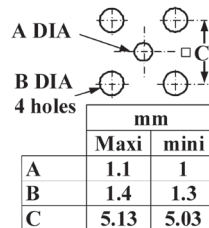
Part number	Fig	Panel drilling	Quantity per Pack	Minimum order quantity	Note
R118A 570 000	1	P01	100 pieces	1000 pieces	Straight
R118A 680 800	2	P02			Right angle

PANEL DRILLING

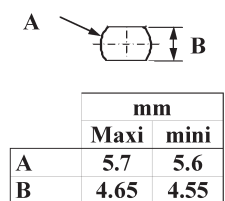
P01



P02

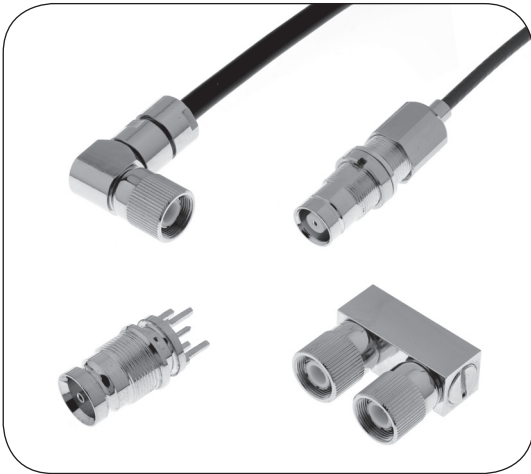


P03



INTRODUCTION

1.6/5.6 - DIN 47295



75Ω

DC - 1 GHz

GENERAL

- Standard coaxial connectors
- Screw-on type

APPLICABLE STANDARDS

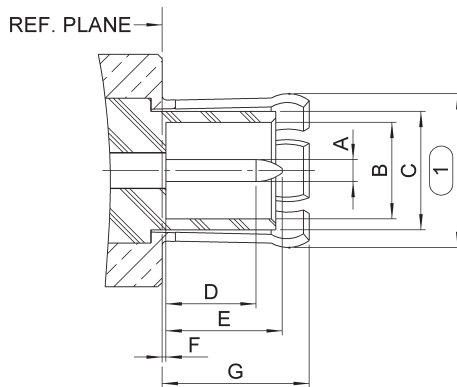
- DIN 47295
- CECC

APPLICATIONS

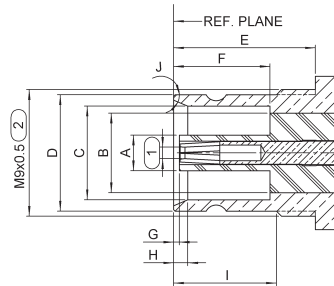
- Civil and military telecommunication

INTERFACE

PLUG



JACK



Letter	mm		inch	
	min.	max.	min.	max.
A DIA	0.97	1.03	.038	.040
B DIA	4		.220	
C DIA	5.6		5.6	
D	3.9	4.3	.153	.169
E	-	5.5	-	.217
F	-	0.15	-	.006
G	6.4	6.6	.252	.260

Letter	mm		inch	
	min.	max.	min.	max.
A DIA	-	3.8	-	.149
B DIA	5.6		.220	
C DIA	6.6	6.69	.260	.269
D DIA	8.1	8.25	.325	.319
E	9.7	-	.382	-
F	6.7	-	.264	-
G	0.25	0.75	.010	.030
H	0.9	1.1	.035	.043
I	7	7.5	.276	.296
J	19°	21°	19°	21°

1) Outer or center contact should meet calibration test of DIN 47295 standard

2) No threading; for a slide-on or snap-on connector

CHARACTERISTICS

Test/characteristics	Values/remarks
ELECTRICAL CHARACTERISTICS	
Impedance	75Ω
Frequency range (see also reflection factor)	DC - 1 GHz
Reflection factors	
flexible cables (IEC 96-75-4-1)	$r \leq 0.01$ at 0.1 GHz 0.02 at 0.5 GHz 0.10 at 1.0 GHz
semi-rigid cables (.141 cable)	$r \leq 0.03$ at 1.0 GHz 0.06 at 2.0 GHz 0.08 at 4.0 GHz
Resistance of center contact	$\leq 4 \text{ m}\Omega$
Resistance of outer contact	$\leq 2 \text{ m}\Omega$
Insulation resistance	$\geq 500 \text{ M}\Omega$
Test voltage at sea level (1)	
flexible cables (IEC 96-75-4-1)	1.5 kV
semi-rigid cables (.141 cable)	1.0 kV
Test voltage at 70 000 ft (20 km) (1)	
flexible cables (IEC 96-75-4-1)	300 V
semi-rigid cables (.141 cable)	200 V
RF leakage (screen efficiency) connector only	$\leq 5 \cdot 10^{-4\Omega}$

(1) Indicated voltages are actual values for a 50 to 60 Hz a.c. current. The operating voltage will depend on the required safety margin

MECHANICAL CHARACTERISTICS

Center contact axial force	40 N
Mating/unmating	
unmating torque	0.3 Nm max
mating force (axial)	10 N max
unmating force (axial)	2.2 N min
Bending moment	1.0 Nm
Cabling	
cable resistance flexible cables (IEC 96-75-4-1)	50 N
semi-rigid cables (cable .141)	200 N
Cable torsion resistance	
flexible cables (IEC 96-75-4-1)	0.3 Nm
semi-rigid cables (cable .141)	1.0 Nm
Durability	1000 cycles

ENVIRONMENTAL CHARACTERISTICS

Test class	55/155/21 - 40/085/21
Vibrations	
acceleration	98 m/s ²
frequency range	10 to 2000 Hz
Hermeticity on flange and on connector	
leakage rate	1 cm ³ /h
pressure diff.	100 110 kPa

ECO VERSION R 129 A XXX XXX

ELECTRICAL CHARACTERISTICS

Impedance	75Ω
Frequency range	DC - 1 GHz
VSWR	1.22 max
Test Voltage	1500 Vrms
Operating Voltage	500 Vrms
Insulation resistance	500 mΩ min
Durability	100 matings
Temperature range	-40°C + 85°C

MATERIALS AND PLATING

Components	Materials	Platings
Coupling nut	Brass	Nickel
Body	Brass	Nickel
Male center contact	Brass	Gold
Female center contact	Beryllium copper/Bronze	Gold
Insulator	PTFE/Polypropylene	

PACKAGING/MOQ

Packaging/MOQ	100 pieces/bulk/MOQ 1000 pieces - unit packaging/MOQ 100 pieces
---------------	---

STRAIGHT PLUGS FOR FLEXIBLE CABLES

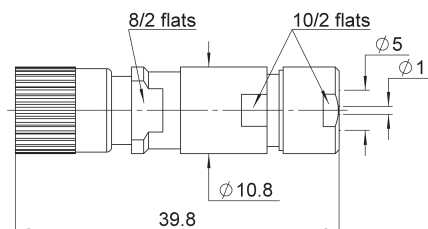


Fig. 1

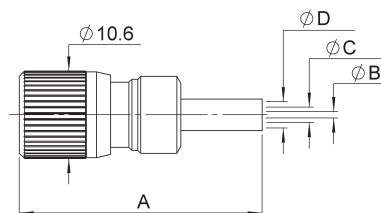


Fig. 2

Cable group	Cable group dia.	Part number	Fig	Dimensions mm				Note
				A	B	C	D	
S3+S4		R129A 010 215	1					ECO version - Clamp type
RG179	2.6/75/S	R129 074 000	2	30	0.8	1.9	3.25	Crimp type
		R129A 074 000		30	0.6	1.75		ECO version - Crimp type
L910/34	4/75	R129A 083 000		27.6	0.6	2.6		ECO version - Crimp type
RG59/RG62	6/75/S	R129 084 000		30		3.85	6.6	Crimp type

RIGHT ANGLE PLUGS FOR FLEXIBLE CABLES

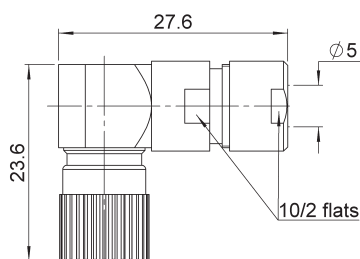


Fig. 1

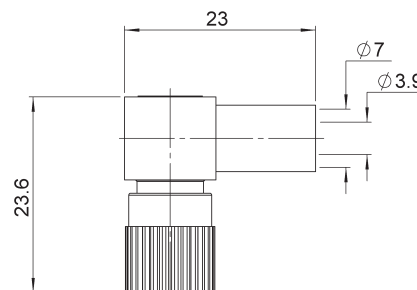


Fig. 2

Cable group	Cable group dia.	Part number	Fig	Note
S3 + S4		R129A 160 215	1	ECO version - Clamp type
RG59/RG62	6/75/S	R129A 184 000	2	ECO version - Crimp type

To download data sheets and assembly instructions, visit www.radiall.com & enter the part number in the Search box. **Bold** part numbers represent products typically in stock & available for immediate shipment. See page 8 and 9 for packaging information.

JACKS AND RECEPTACLES

STRAIGHT BULKHEAD JACKS FOR FLEXIBLE CABLE

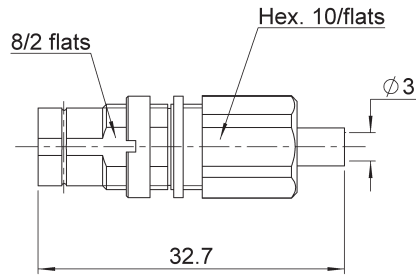


Fig. 1

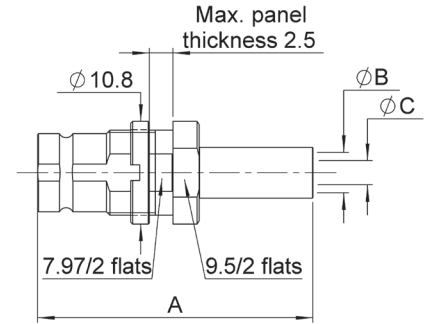
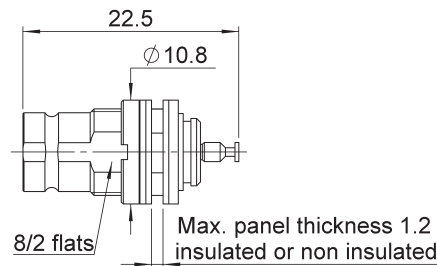


Fig. 2

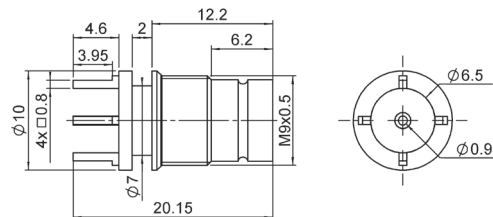
Cable group	Cable group dia.	Part number	Fig	Dimensions mm			Panel drilling	Note
				A	B	C		
RG179	2.6/75/S	R129A 301 215	1				P01	ECO version - Clamp type
		R129 337 020		29	4.25	2.55		Crimp type
L910/34	4/75	R129 347 000	2	34	4.20	2.575		Insulated - Crimp type
		R129A 347 000		30		2.6		ECO version - Crimp type

STRAIGHT BULKHEAD RECEPTACLE WITH SOLDER POT



Part number	Panel drilling	Note
R129 551 000	P01	Insulated

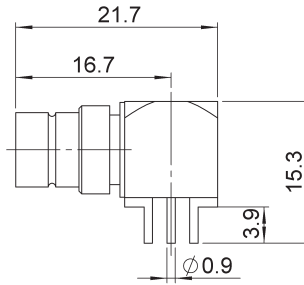
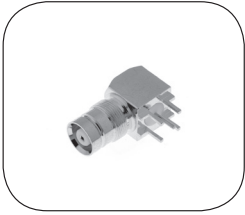
STRAIGHT PCB FEMALE RECEPTACLE



Part number	Panel drilling	Note
R129A 576 030	P03+P04	ECO version

To download data sheets and assembly instructions, visit www.radiall.com & enter the part number in the Search box. **Bold** part numbers represent products typically in stock & available for immediate shipment. See page 8 and 9 for packaging information.

RIGHT ANGLE PCB FEMALE RECEPTACLE



Part number	Panel drilling	Note
R129A 666 000	P02	ECO version

IN SERIES ADAPTERS

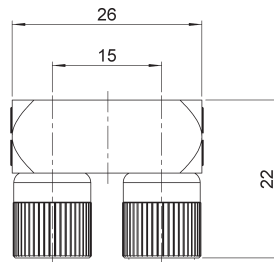


Fig. 1

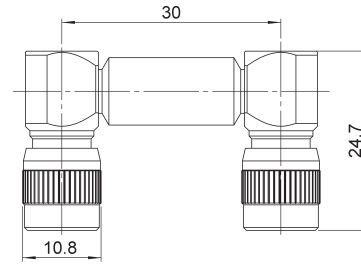
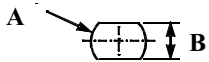


Fig. 2

Part number	Fig	Note
R129A 790 000	1	U type male - male ECO version
R129 796 215	2	U type male - male

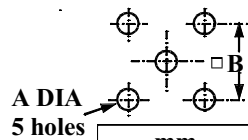
PANEL DRILLING

P01



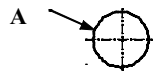
	mm	
	Maxi	mini
A	9.3	9.2
B	8.3	8.2

P02



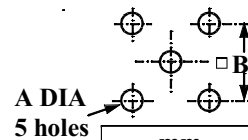
	mm	
	Maxi	mini
A	1.4	1.3
B	5.2	5.0

P03



	mm	
	Maxi	mini
A	9.3	9.2

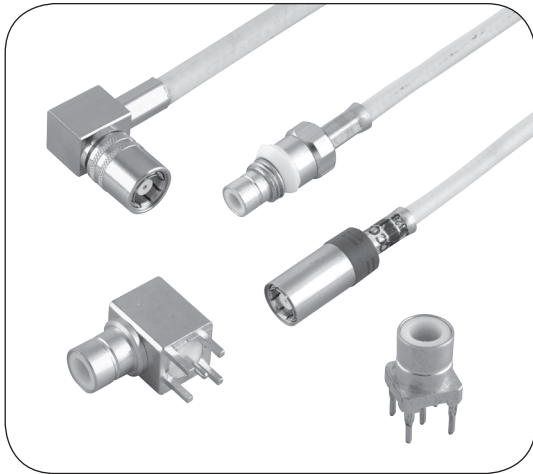
P04



	mm	
	Maxi	mini
A	1.3	1.2
B	5.21	5.11

To download data sheets and assembly instructions, visit www.radiall.com & enter the part number in the Search box. **Bold** part numbers represent products typically in stock & available for immediate shipment. See page 8 and 9 for packaging information.

INTRODUCTION



75Ω	DC - 3 GHz
-----	------------

GENERAL

- Standard coaxial connectors
- Reliable lock coupling
- 3 types: Standard Density (12.7mm)
High Density (10mm)
Ultra High Density (9mm)

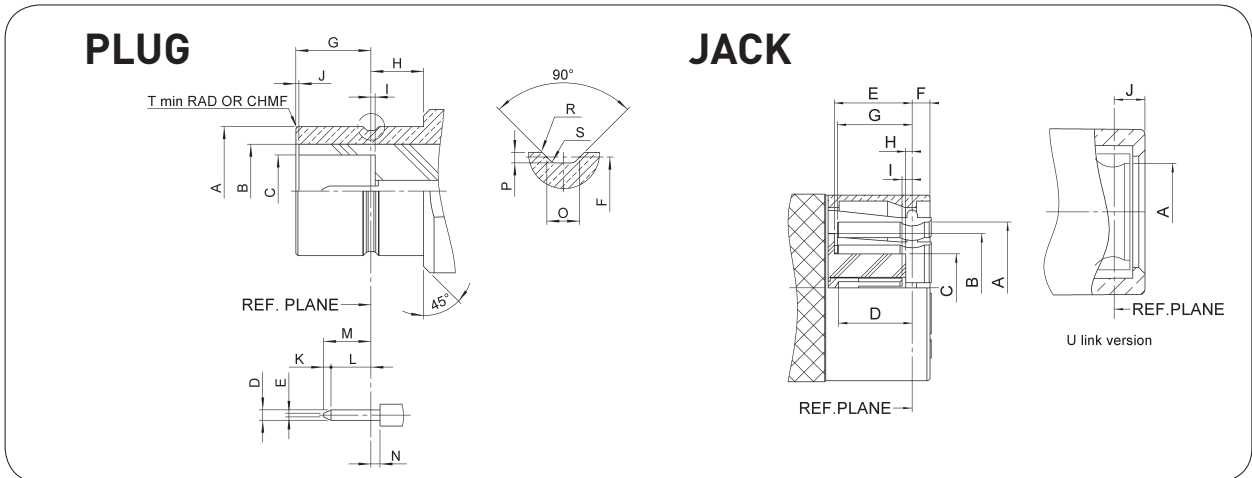
APPLICABLE STANDARDS

- BS9210 F0022

APPLICATIONS

- Telecom DDF (Digital Distribution Frames)

INTERFACE



Letter	mm		inch	
	min.	max.	min.	max.
A DIA	6.20	6.23	.244	.245
B DIA	5.25 NOM		.207 NOM	
C DIA	3.4	3.475	.134	.137
D DIA	0.48	0.52	.019	.02
E DIA	0.125	0.225	.005	.009
F DIA	5.97	6.02	.235	.237
G	3.5	3.55	.138	.14
H	2.4	2.55	.095	.1
I	0.05	0.175	.002	.007
J	0.00	0.10	0.00	.004
K	0.25	0.35	.01	.014
L	1.35		.053	
M		2.05		.081
N		0.18		.007
O	0.58 NOM		.023 NOM	
P	0.15	0.25	.006	.01
R	0.05	0.15	.002	.006
S		0.13		.005
T	0.1	0.2	.004	.008

Letter	mm		inch	
	min.	max.	min.	max.
A DIA	6.31	6.36	.248	.25
B DIA	5.25 NOM		.207 NOM	
C DIA	3.22	3.30	.127	.13
D	3.2	3.53	.126	.139
E	3.63	3.83	.143	.151
F		1.8		.071
G	3.61	3.77	.142	.148
H	0.23	0.38	.009	.015
I	0.23	0.48	.009	.019
J	1.475	1.97	.058	.078

TYPE 43 GENERAL TECHNICAL SPECIFICATION

Radiall 75Ω coaxial Type 43 connectors are designed to meet or exceed the requirements of BS9210 F0022. The following information is subject to change without notice. The performance values shown are typical and may not relate to all connector styles available.

Test/characteristics	Values/remarks
----------------------	----------------

ELECTRICAL CHARACTERISTICS

Impedance	75Ω
Frequency range	DC - 3 GHz
Temperature range	-40°C to + 100°C
V.S.W.R. (Straight Connectors)	1.20 max
V.S.W.R. (Right Angle Connectors)	1.25 max
Voltage Rating	500 Vrms max
Dielectric Withstanding Voltage	1500 Vrms min
Insulation resistance	5000 MΩ min

MECHANICAL CHARACTERISTICS

Durability	250 matings
Cable retention (Plug connectors) (Socket connectors)	60 to 220 N min***
Center contact retention (Plug connectors) (Socket connectors)	22 N min
Weight	10 g (grams) typical

MATERIALS AND PLATING

Components	Materials	Platings
Body Components*	Brass	Selective Gold
Outer contact	Bronze	Selective Gold
Center contact (male)	Brass	Gold
Center contact (female)	Beryllium Copper	Gold
Insulator	PTFE	Not applicable
Panel Grommet	Polyacetal	Not applicable
Ferrule	Brass	Nickel
Panel Mounting Hardware**	Brass or Phosphor Bronze	Nickel

* In general all Type 43 series connector bodies are gold plated in mating areas.

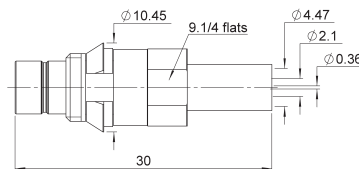
As a note the single piece Type 43 connector body is gold plated in the mating area with other surfaces being nickel coated. All multi-piece connector bodies comprise of a gold plated front body (mating area) and a nickel plated back body (crimp area).

** Panel mounting hardware includes components such as - nut, washer, spacer etc.

*** Note, **lower cable retention value** for RG179 - 60 N min and BT3002/TZC 75024 - 150 N min

PLUG - STANDARD DENSITY

STRAIGHT PLUG CRIMP TYPE FOR FLEXIBLE CABLE



Cable group	Cable group dia.	BT Reference	Part number	Panel drilling	Packaging
BT3002	3.6/75/D	P43/5 GTIS	R214 313 722	P03	20 pieces

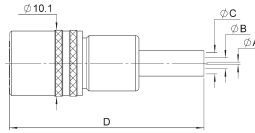
To download data sheets and assembly instructions, visit www.radiall.com & enter the part number in the Search box.

Bold part numbers represent products typically in stock & available for immediate shipment.

See page 8 and 9 for packaging information.

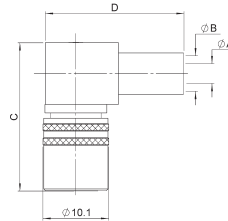
SOCKETS AND RECEPTACLES - STANDARD DENSITY

STRAIGHT SOCKETS CRIMP TYPE FOR FLEXIBLE CABLES



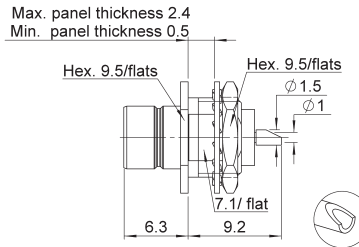
Cable group	Cable group dia.	BT Reference	Part number	Dimensions				Packaging
				A	B	C	D	
RG179	2.6/75/S	S 43/4 FS	R214 083 902	0.38	1.73	3.25	3.2	20 pieces
BT3002	3.6/75/D	S 43/5 FS	R214 083 922	0.36		4.47		

RIGHT ANGLE SOCKETS CRIMP TYPE FOR FLEXIBLE CABLE



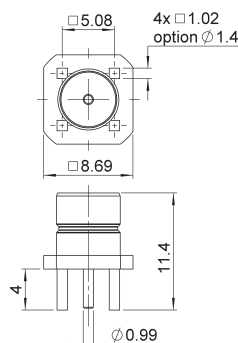
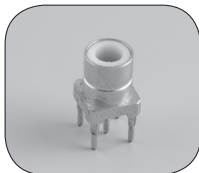
Cable group	Cable group dia.	BT Reference	Part number	Dimensions				Packaging
				A	B	C	D	
RG179	2.6/75/S	S 43/4 C	R214 182 902	1.73	3.25	25	23	20 pieces

STRAIGHT BULKHEAD RECEPTACLE WITH SOLDER POT



Part number	Panel drilling	Packaging
R214 553 000	P02	unit

STRAIGHT PCB PLUG RECEPTACLES



BT Reference	Part number	Panel drilling	Packaging
P 43/1 D	R214 426 704	P01	100 pieces

RIGHT ANGLE PCB PLUG RECEPTACLES

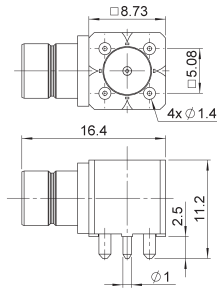
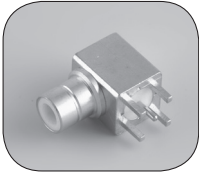


Fig. 1

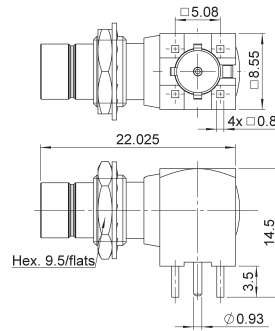


Fig. 2

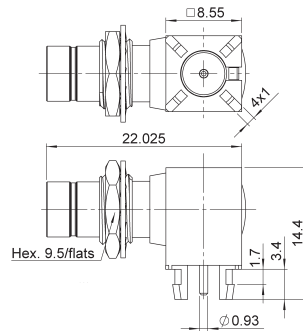
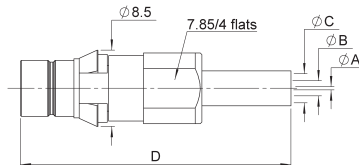


Fig. 3

Part number	Fig	Panel drilling	Note	Packaging
R214 665 850	1	P01		30
R214 670 310	2		Bulkhead	160
R214 670 320	3		Bulkhead/Harpoon legs	160

PLUGS - HIGH DENSITY

STRAIGHT PLUGS CRIMP TYPE FOR FLEXIBLE CABLES



Cable group	Cable group dia.	BT Reference	Part number	Dimensions				Panel drilling	Packaging
				A	B	C	D		
RG179	2.6/75/S	HDC 43/4 GTIS	R214 318 702	0.38	1.73	3.25	35	P04	20 pieces
RA8000	2.75/75/D	HDC 43/8 GTIS	R214 318 732	0.36	2.10	4.06			
BT3002	3.6/75/D	HDC 43/5 GTIS	R214 318 722	0.36	2.10	4.47			
RA7000	4.5/75/D	HDC 43/7 GTIS	R214 325 742	0.69	3.00	5.48			
BT2002	5.1/75/D	HDC 43/2 GTIS	R214 318 762	0.69	2.60	4.75			
BT2003	6.7/75/D	HDC 43/3 GTIS	R214 318 782	0.72	3.90	7.15			

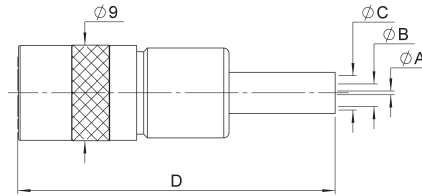
To download data sheets and assembly instructions, visit www.radiall.com & enter the part number in the Search box.

Bold part numbers represent products typically in stock & available for immediate shipment.

See page 8 and 9 for packaging information.

SOCKETS AND U LINKS - HIGH DENSITY

STRAIGHT SOCKETS CRIMP TYPE FOR FLEXIBLE CABLES



Cable group	Cable group dia.	BT Reference	Part number	Dimensions				Packaging
				A	B	C	D	
RG179	2.6/75/S	HDC 43/4FS	R214 088 902	0.38	1.73	3.25	32	20 pieces
RA8000	2.75/75/D	HDC 43/8FS	R214 088 932	0.36	2.10	4.06	35	
BT3002	3.6/75/D	HDC 43/5FS	R214 088 922	0.35	2.10	4.47	30	
BT2002	5.1/75/D	HDC 43/2FS	R214 088 962	0.69	2.60	4.75	30	
BT2003	6.7/75/D	HDC 43/3FS	R214 088 982	0.69	3.90	7.15	30	

U LINKS

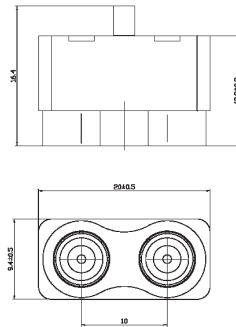
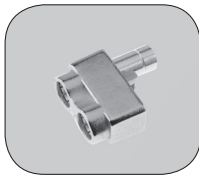
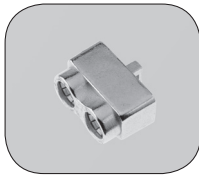


Fig. 1

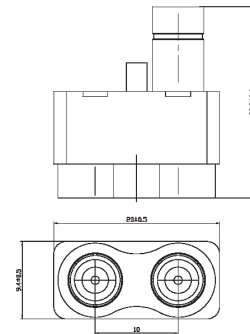
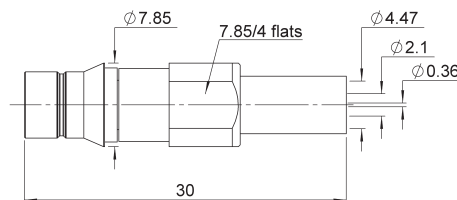


Fig. 2

BT Reference	Part number	Fig	Packaging
U link 10A	R214 797 703	1	50 pieces
U link 10B	R214 798 703	2	

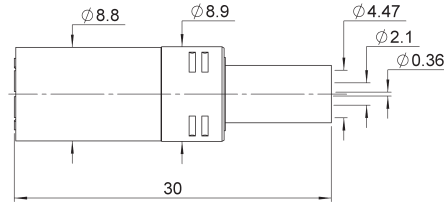
PLUGS - ULTRA HIGH DENSITY

STRAIGHT PLUG CRIMP TYPE FOR FLEXIBLE CABLES



Cable group	Cable group dia.	BT Reference	Part number	Panel drilling	Packaging
BT3002	3.6/75/D	UHDC 43/5 GTIS	R214 320 722	P05	20 pieces

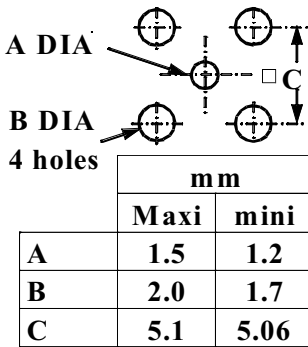
STRAIGHT SOCKETS CRIMP TYPE FOR FLEXIBLE CABLES



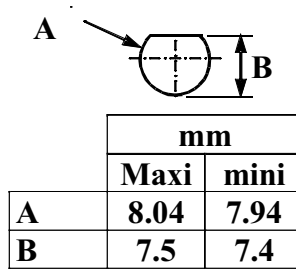
Cable group	Cable group dia.	BT Reference	Part number	Packaging
BT3002	3.6/75/D	UHDC 43/5FS	R214 089 922	20 pieces

PANEL DRILLING

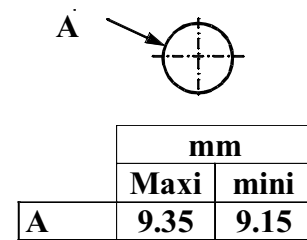
P01



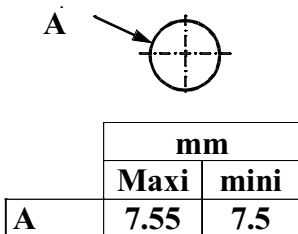
P02



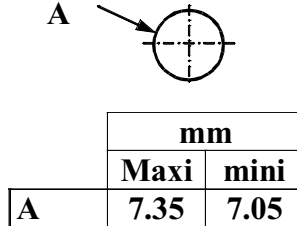
P03



P04



P05





AEROSPACE



AUTOMOTIVE



DEFENSE



INDUSTRIAL



INSTRUMENTATION



MEDICAL



SPACE



TELECOM

EUROPE

France - RADIALL S.A.

101, Rue Ph. Hoffmann
93116 ROSNY sous BOIS (Paris)
Tel.: +33 1 49 35 35 35 - Fax: +33 1 48 54 63 63
E-Mail: info@radiall.com

Finland - RADIALL SF

P.O. Box 202 - 90101 OULU
Tel.: +358 407 522 412
E-Mail: infofi@radiall.com

Germany - RADIALL GmbH

Carl-Zeiss Str. 10 Postfach 200143
D63307 - RÖDERMARK (Frankfurt)
Tel.: +49 60 74 91 07 0 - Fax: +49 60 74 91 07 70
E-Mail: infode@radiall.com

Italy - RADIALL Elettronica S.R.L.

Via Concordia, 5 - 20090 ASSAGO MILANO
Tel.: +39 02 48 85 121 - Fax: +39 02 48 84 30 18
E-Mail: infoit@radiall.com
Regional office: Roma

Netherlands - RADIALL B.V.

Hogebrinkerweg 15b - 3871 KM HOEVELAKEN
Tel.: +31 33 253 40 09 - Fax: +31 33 253 45 12
E-Mail: infonl@radiall.com

Sweden - RADIALL A.B.

Sjöängsvägen 2 - SE-192 72 SOLLENTUNA (Stockholm)
Tel.: +46 844 434 10 - Fax: +46 875 449 16
E-Mail: infose@radiall.com

U.K. - RADIALL Ltd.

Ground Floor, 6 The Grand Union Office Park,
Packet Boat Lane
UXBRIDGE Middlesex UB8 2GH (London)
Tel.: +44 1895 425 000 - Fax: +44 1895 425 010
E-Mail: infouk@radiall.com

NORTH AMERICA

USA - RADIALL USA, Inc.

6825 West Galveston Street
CHANDLER, Arizona 85226
Tel.: +1 480 682 9400 - Fax: +1 480 682 9403
E-Mail: infousa@radiall.com

ASIA

China - SHANGHAI RADIALL Electronic Co., Ltd.

N° 390 Yong He Road 200072 - SHANGHAI
Tel.: +86 21 66 52 37 88 - Fax: +86 21 66 52 11 77
E-Mail: infosh@radiall.com

Japan - NIHON RADIALL

Shibuya-ku Ebisu 1-5-2, Kougetsu Bldg 405
TOKYO 150-0013
Tel.: +81 3 3440 6241 - Fax: +81 3 3440 6242
E-Mail: infojp@radiall.com

Hong Kong - RADIALL Electronics Ltd.

Flat D, 6/F, Ford Glory Plaza,
37-39 Wing Hong Street
Cheung Sha Wan
KOWLOON HONG KONG
Tel: +852-2959-3833 - Fax: +852-2959-2636
E-Mail: infohk@radiall.com

India - RADIALL India Pvt. Ltd.

25 D, II Phase, Peenya Industrial Area
BANGALORE 560058
Tel.: +91 80 83 95 271 - Fax: +91 80 83 97 228
E-Mail: infoin@radiall.com

ALSO REPRESENTED IN

Australia	Hungary	Poland
Austria	Indonesia	Russia
Belgium	Israel	Singapore
Brazil	Korea	Spain
Czech Republic	Latvia	Switzerland
Denmark	Lithuania	Taiwan
Estonia	Malaysia	Thailand
Greece	Norway	Vietnam
	Philippines	South Africa

For the above countries, please contact the local agent or RADIALL at info@radiall.com

