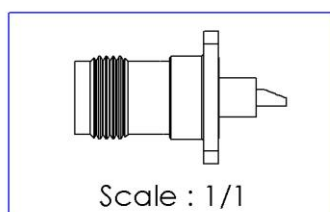
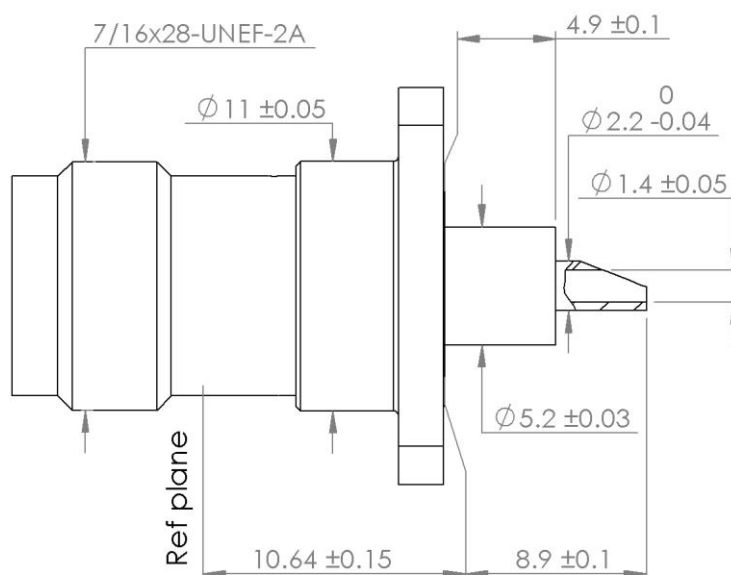
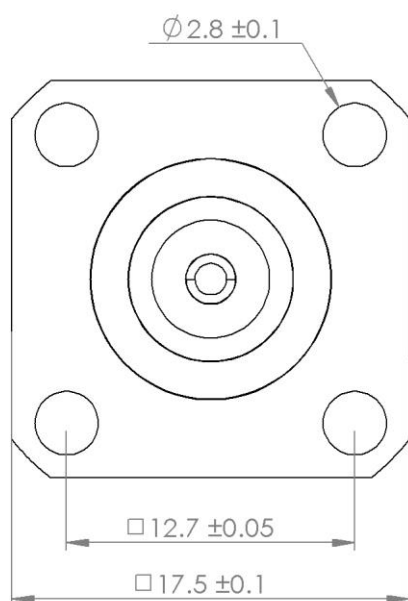


PAGE 1/2

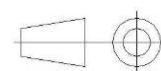
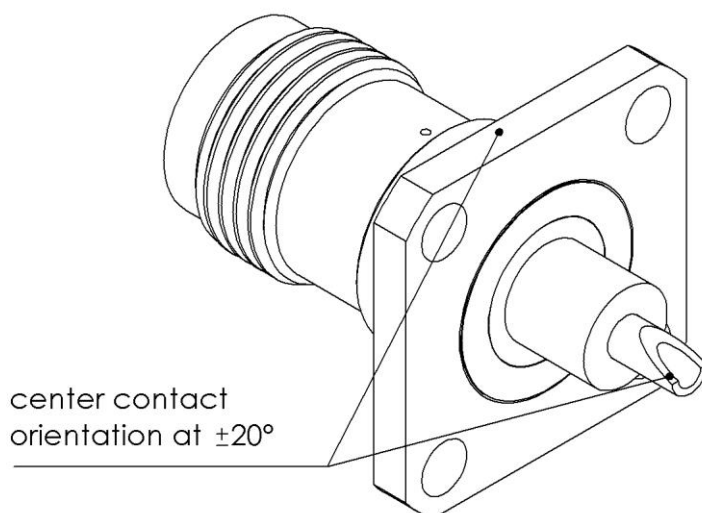
ISSUE 2034A

SERIES **TNC-S**

PART NUMBER **R143416653**



All dimensions are in mm.



| COMPONENTS | MATERIALS | PLATING (μm) |
|----------------|-------------------------|------------------------------|
| Body | BERYLLIUM COPPER | GOLD 1.3 OVER NICKEL2 |
| Center contact | BERYLLIUM COPPER | GOLD 1.3 OVER NICKEL2 |
| Outer contact | BERYLLIUM COPPER | GOLD 1.3 OVER NICKEL2 |
| Insulator | PTFE | |
| Gasket | | |
| Others parts | | |
| - | - | - |
| - | - | - |

PAGE 2/2

ISSUE 2034A

SERIES TNC-S

PART NUMBER R143416653

PACKAGING

| Standard | Unit | Other |
|----------|------|------------|
| 1 | - | Contact us |

ELECTRICAL CHARACTERISTICS

| | | |
|---------------------------------|--------------|-------------------|
| Impedance | 50 | Ω |
| Frequency | DC - 5 | GHz |
| VSWR | 1.1 + 0,0100 | x F(GHz) Maxi |
| Insertion loss | 0.02+0.05 | √F(GHz) dB Maxi |
| RF leakage | - (100 | - F(GHz)) dB Maxi |
| Voltage rating | 500 | Vrms Maxi |
| Dielectric withstanding voltage | 1500 | Vrms mini |
| Insulation resistance | 5000 | MΩ mini |

MECHANICAL CHARACTERISTICS

| | | |
|----------------------------|---------|-------------|
| Center contact retention | | |
| Axial force – Mating End | 27 | N mini |
| Axial force – Opposite end | 27 | N mini |
| Torque | 2.8 | N.cm mini |
| Recommended torque | | |
| Mating | 265 | N.cm |
| Panel nut | NA | N.cm |
| Mating life | 500 | Cycles Maxi |
| Weight | 11,8000 | g Maxi |

ENVIRONMENTAL

| | | |
|-----------------------|----------|-----------|
| Operating temperature | -65/+165 | °C |
| Hermetic seal | NA | Atm.cm3/s |
| Panel leakage | NA | |

SPECIFICATION

RAD-GEN-CONN 001
RAD-DET-CONN 015

OTHER CHARACTERISTICS

Assembly instruction:

Others: