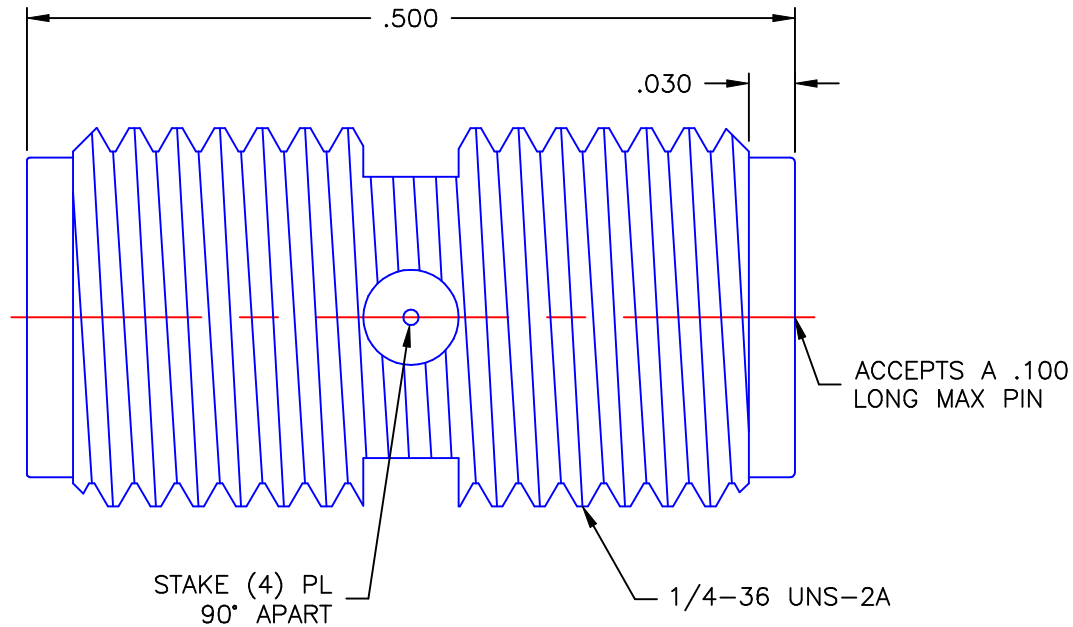


REVISIONS			
REV	DESCRIPTION	DATE	APPROVED
A	INITIAL RELEASE	03/03/09	A.D.M.



NOTES:



MATERIALS:

1. BODY = STAINLESS STEEL PER ASTM A582, ALLOY 303, CONDITION "A".
2. INSULATOR = VIRGIN WHITE TEFLON PER ASTM D1710, GRADE 1, TYPE I, CLASS "B".
3. CONTACT = BERYLLIUM COPPER PER ASTM B196, ALLOY C17300, TEMPER TD04.

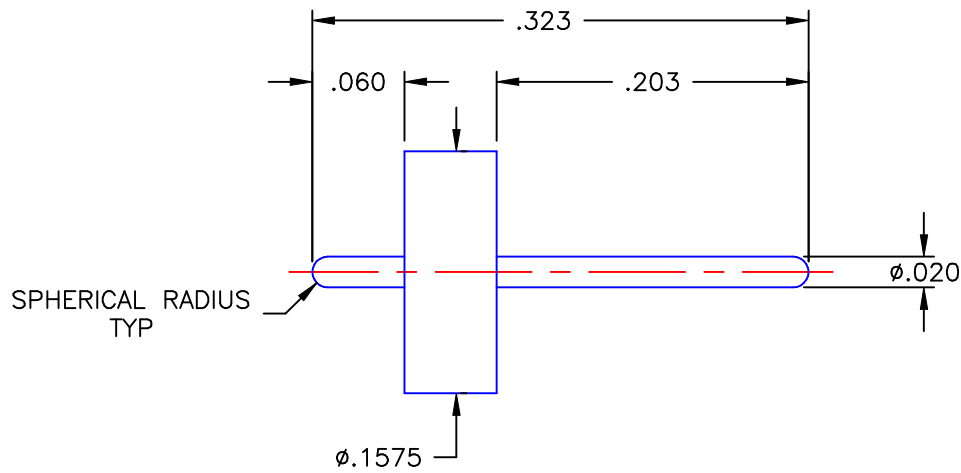
FINISHES:

1. BODY = PASSIVATE PER QQ-P-35, TYPE VI.
2. CONTACT = GOLD PLATE PER MIL-G-45204, TYPE II, CLASS 1, GRADE C, OVER .00010 TO .00020 STRESS FREE SULFAMATE NICKEL PER QQ-N-290.

Property of Radiall Incorporated  
 This document cannot be reproduced or  
 communicated to a third party without prior  
 written permission of RADIALL Incorporated.

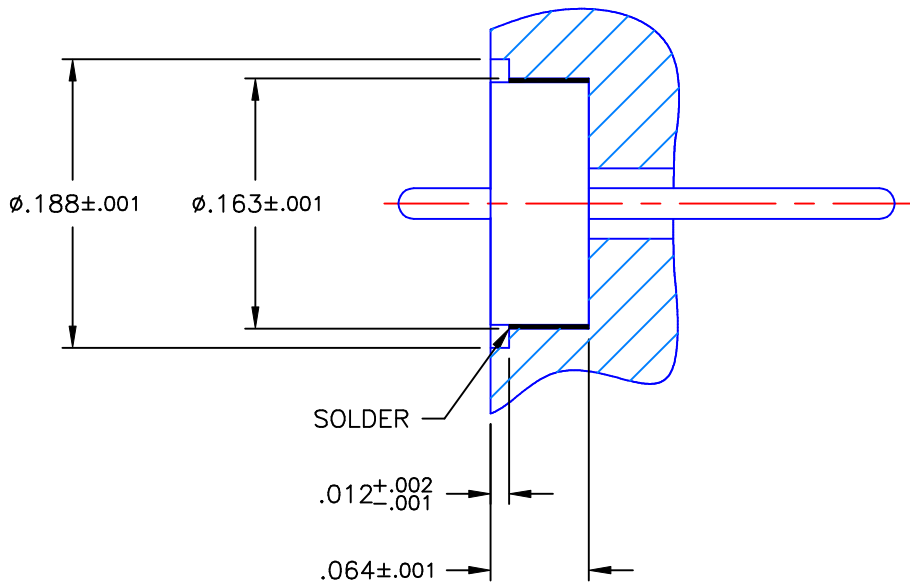
UNLESS OTHERWISE SPECIFIED DIMENSIONS ARE IN INCHES TOLERANCES ON	DWN: A.D.M.	DATE 03/03/09	 <b>APPLIED ENGINEERING PRODUCTS</b> 104 John W. Murphy Dr. New Haven, CT 06513		
	CHKD: D.N.	DATE 03/03/09			
DECIMAL	ANGLE	APVD: J.M.	<b>SMA STRAIGHT JACK          SCREW-IN MOUNTING          RECEPTACLE</b>		
		DATE 03/03/09			
REFERENCE:	MATERIALS & FINISHES: SEE NOTES	SIZE A	FSCM NO. 19505	DWG NO. 9513-9113-012	REV A
ORIGINATOR: A.D.M. DATE: 03/03/09		SCALE 8:1	THIRD ANGLE PROJECTION 		SHEET 1 OF 2

9513-9113-012



MATERIALS: OUTER RING AND PIN = KOVAR  
GLASS BEAD = CORNING 7052

FINISHES: OUTER RING AND PIN = GOLD PLATE PER MIL-G-45204, TYPE II, GRADE C,  
CLASS I, OVER NICKEL PER MIL-G-26074, CLASS I, OVER COPPER PER MIL-C-14550.



RECOMMENDED MOUNTING

Property of Radiall Incorporated  
This document cannot be reproduced or  
communicated to a third party without prior  
written permission of RADIALL Incorporated.

UNLESS OTHERWISE SPECIFIED  
DIMENSIONS ARE IN INCHES  
TOLERANCES ON

REFERENCE:



APPLIED ENGINEERING PRODUCTS

104 John W. Murphy Dr.  
New Haven, CT 06513

DECIMAL	ANGLE

SIZE A	FSCM NO. 19505	DWG NO. 9513-9113-012	REV A
-----------	-------------------	--------------------------	----------

SCALE 8:1

THIRD ANGLE  
PROJECTION

SHEET 2 OF 2

9513-9113-012