

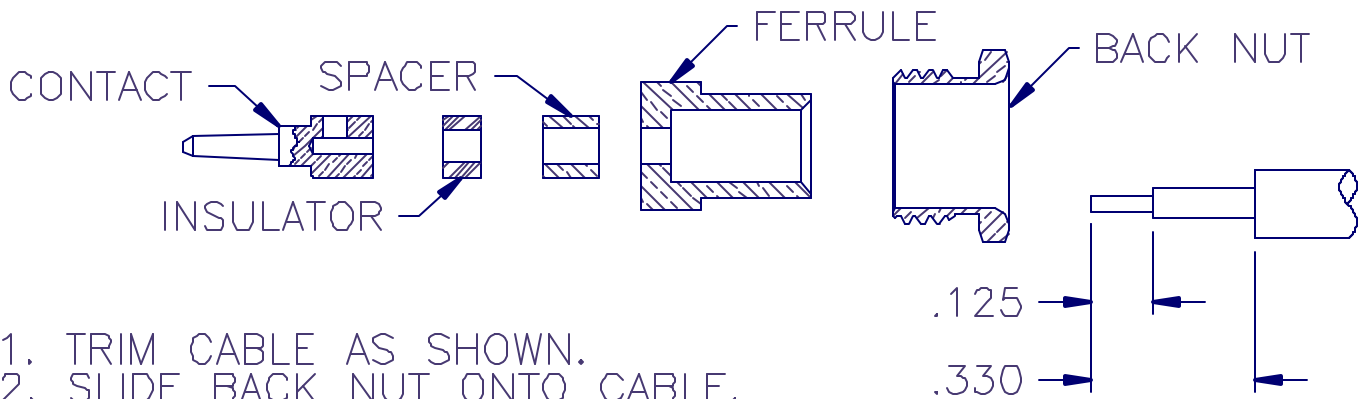


APPLIED ENGINEERING PRODUCTS

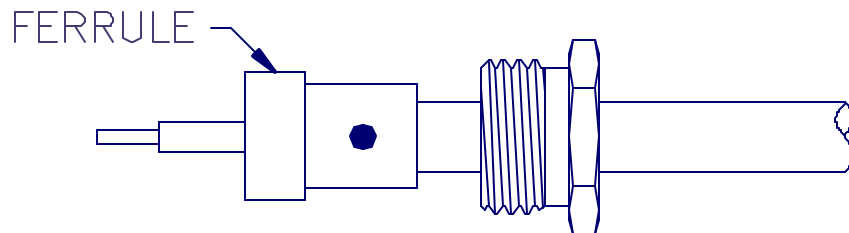
(203) 776-2813 FAX (203) 776-8294

www.aepconnectors.com

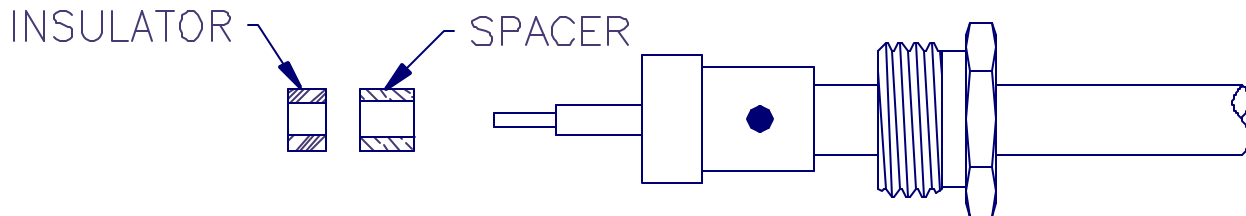
Assembly Instructions



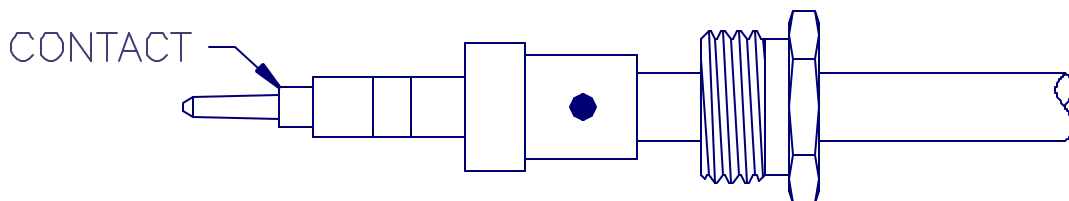
1. TRIM CABLE AS SHOWN.
2. SLIDE BACK NUT ONTO CABLE.



3. SLIDE FERRULE OVER CABLE DIELECTRIC UNTIL IT BOTTOMS ON THE CABLE JACKET.
4. SOLDER FERRULE TO CABLE JACKET. DO NOT DISTURB SOLDER JOINT UNTIL IT HAS COOLED.



5. INSTALL SPACER AND SMALL INSULATOR OVER CABLE DIELECTRIC.



6. SOLDER CONTACT TO CENTER CONDUCTOR.
7. INSERT CABLE ASSEMBLY INTO CONNECTOR BODY AND TIGHTEN BACK NUT TO 90-100 INCH OUNCES TORQUE (REF: #10-32 THREAD)