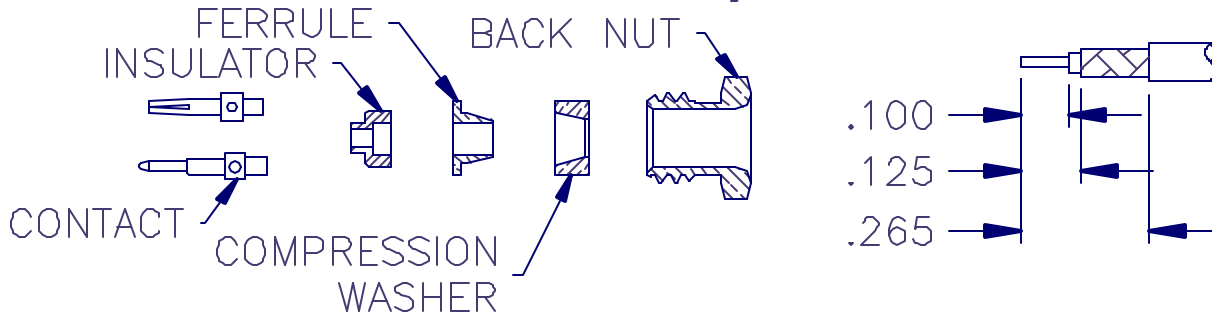




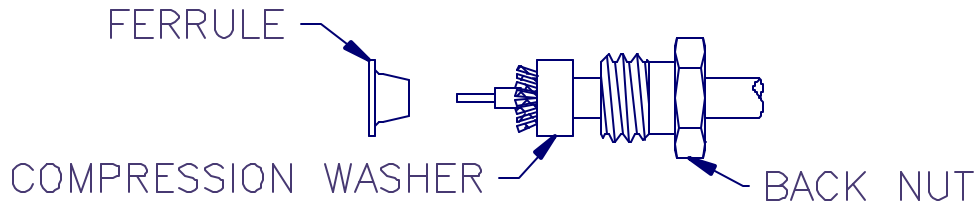
# APPLIED ENGINEERING PRODUCTS

(203) 776-2813 FAX (203) 776-8294  
www.aepconnectors.com

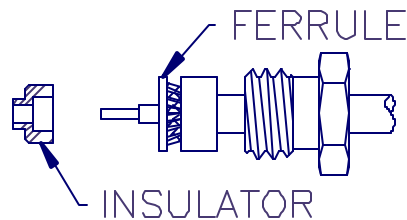
## Assembly Instructions



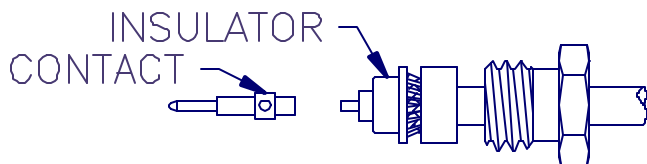
1. TRIM CABLE AS SHOWN. TIN END OF CENTER CONDUCTOR.
2. SLIDE BACK NUT ONTO CABLE.



3. SLIDE COMPRESSION WASHER OVER THE BRAID UNTIL IT BOTTOMS OUT ON THE CABLE JACKET.
4. FAN OUT BRAID RADIALLY AGAINST THE COMPRESSION WASHER BY ROTATING THE CABLE DIELECTRIC.



5. SLIDE FERRULE ONTO CABLE, OVER DIELECTRIC AND UNDER BRAID. PUSH INTO WASHER UNTIL IT STOPS. IF NECESSARY TRIM EXCESS BRAID FLUSH WITH SURFACE OF COMPRESSION WASHER AND FLANGE OF FERRULE.



6. INSTALL SMALL INSULATOR OVER CABLE DIELECTRIC.
7. SOLDER CONTACT TO CENTER CONDUCTOR. WHEN CONTACT ADAPTER IS ALSO SUPPLIED, INSTALL CONTACT ADAPTER ONTO CENTER CONDUCTOR, THEN SOLDER CONTACT TO CENTER CONDUCTOR.
8. INSERT CABLE ASSEMBLY INTO BODY AND TIGHTEN NUT WITH A TORQUE OF 140-150 INCH OUNCES.