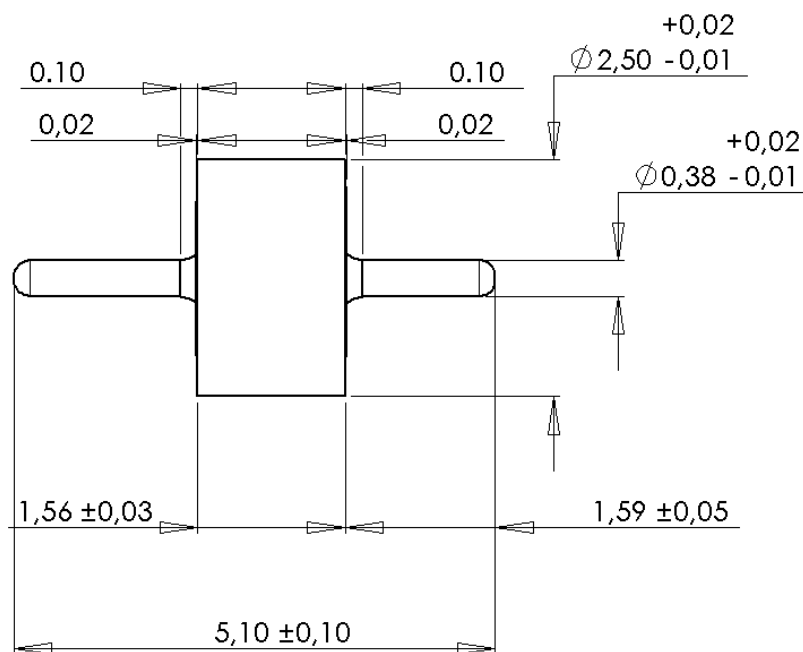
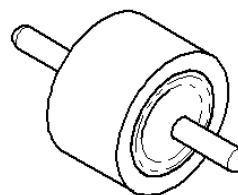


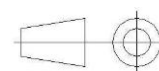
PAGE 1/2	ISSUE 1406A	SERIES ACC-COAX	PART NUMBER R280752600
----------	-------------	-----------------	------------------------



Scale : 1



All dimensions are in mm.

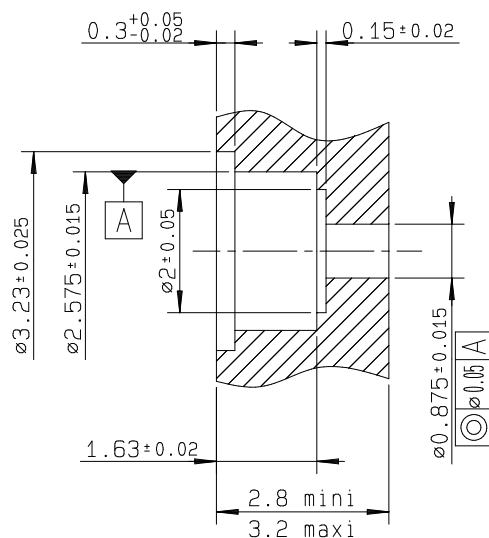


COMPONENTS	MATERIALS	PLATING (μm)
Body	DILVER P1	GOLD 1.27 OVER NICKEL 1.27
Center contact	DILVER P1	GOLD 1.27 OVER NICKEL 1.27
Outer contact	-	-
Insulator	GLASS	-
Gasket	-	-
Others parts	-	-
-	-	-
-	-	-
Operating temperature	-65/+200 °C	
Weight	0,05 g	
Others characteristics	Hermetic seal 10-8 Atm.cm	
	SPECIFICATION:	
	RAD-GEN-CONN-001	
	RAD-DET-CONN-020	

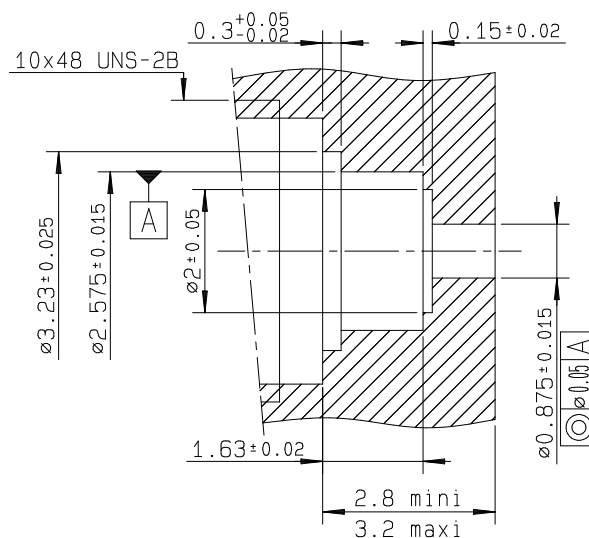
## ADDITIONAL INFORMATIONS MOUNTING INSTRUCTIONS

### 1 - MOUNTING HOLE

#### FLANGE SHROUD



#### THREAD-IN SHROUD

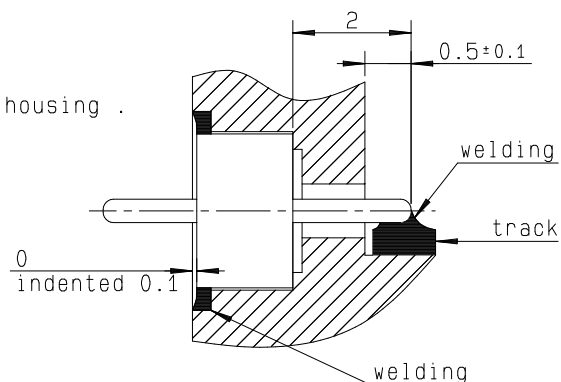


### 2 - ASSEMBLY INSTRUCTIONS

2-1 - Introduce the glass bead into its housing .

2-2 - Weld the ring by putting  
a welding wire in the groove .

2-3 - Weld the pin on the track .  
Beware of putting too much welding !



IMPORTANT: for maximum RF characteristics the link track/pin must be as thin as possible. We advise you to respect rigourously the 0.5+/-0.1 dimension, by welding accurately the bead pin directly on the track .