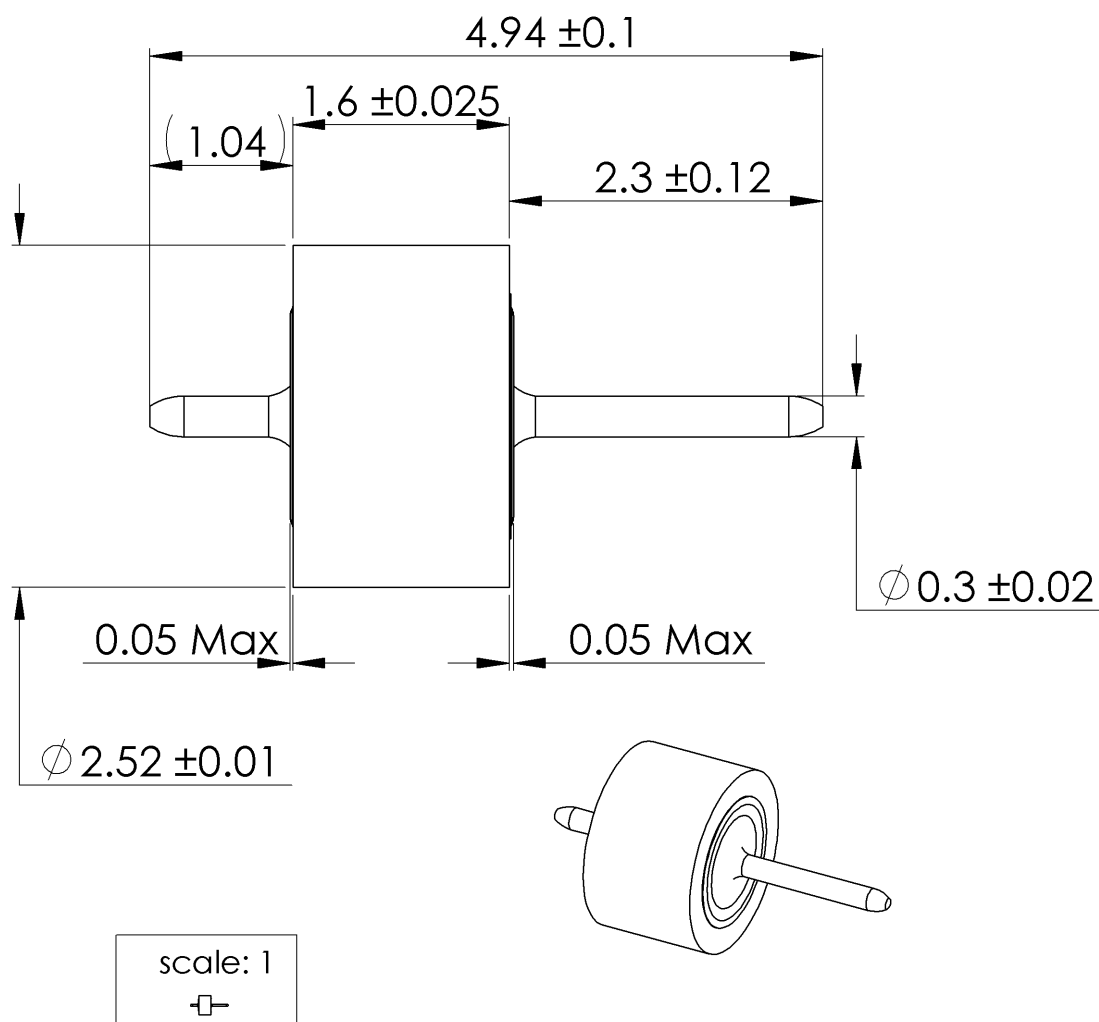


PAGE 1/3	ISSUE 1733A	SERIES ACCESSORY	PART NUMBER R280751120X
----------	-------------	---------------------	--------------------------------



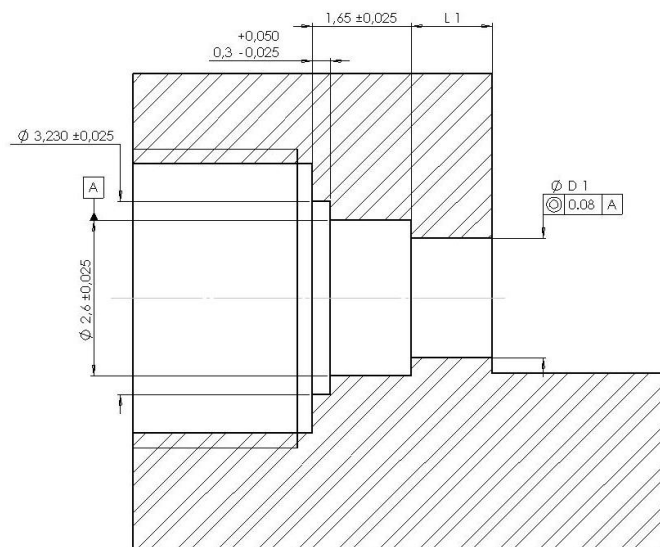
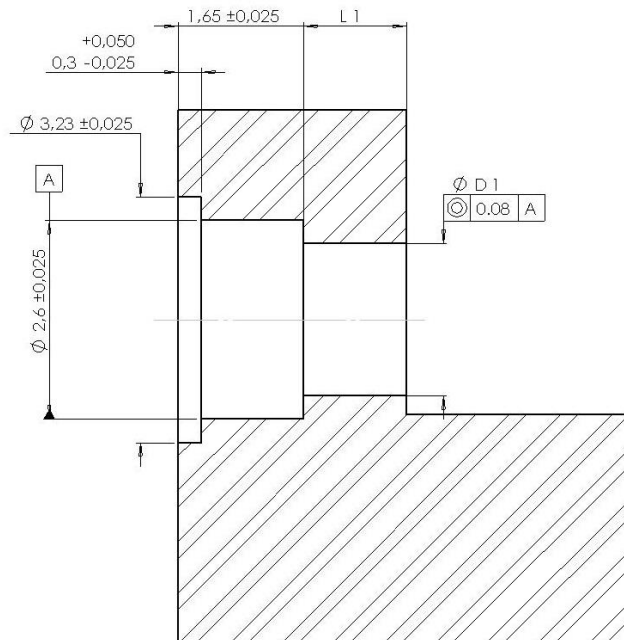
All dimensions are in mm. Tolerances according ISO 2768 m-H

COMPONENTS	MATERIALS	PLATING (μm)
Body	DILVER P1	Ni2 Au1.3
Center contact	DILVER P1	Ni2 Au1.3
Outer contact	-	-
Insulator	- GLASS	-
Gasket	-	-
Others parts	-	-
-	-	-
-	-	-
Operating temperature	-65/+200 °C	
Weight	0,0400 g	
Others characteristics	Nominal Impedance: 50Ω Hermetic seal: 10⁻⁸Atm.cm³/s	
Specifications	RAD-GEN-CONN-001 RAD-DET-CONN-020	

RECOMMENDED MONTING HOLE DETAIL

FLANGE RECEPTACLE

PIN Ø 0.3



D 1 and L 1 dimensions have to be determined according to each application.

We advise of following cases: (see page 3)

- Using of R280 469 removable socket

D 1 = 2 ± 0.02

L 1 = 2.54 ± 0.01

- The bead pin is directly welded on the track

D 1 = 0.7 ± 0.02

L 1 = from 1.02 to 3.99 according to customer's design criteria.

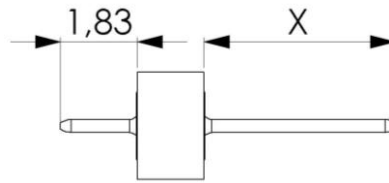
PAGE 3/3

ISSUE 1733A

SERIES
ACCESSORY

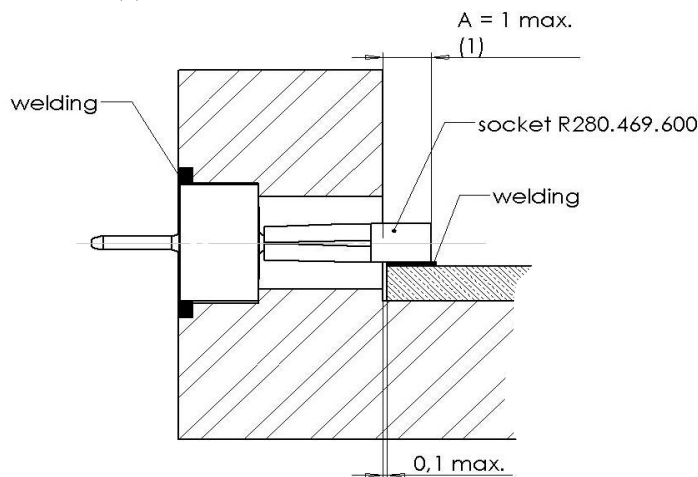
PART NUMBER R280751120X

ASSEMBLY INSTRUCTIONS



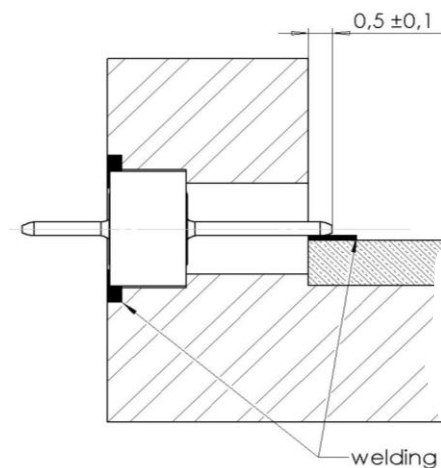
MOUNTING A: WITH REMOVABLE CONTACT

$$X = 2 \pm 0.5 \text{ (2)}$$



MOUNTING B: WITH SEAL ONLY

$$X = L + A$$



GLASS SEAL

- 1 – Adjust X by cutting the pin if necessary.
- 2 – Introduce the glass bead into its housing as here above (with the mounted socket.)
- 3 – Weld the ring by putting a welding wire in the groove.
- 4 – Weld the pin (or socket) on the track. Beware of putting too much welding!

IMPORTANT: for maximum RF characteristics the Link track/ pin must be as thin as possible. We advise you to respect rigourously the A dimension, by welding accurately the bead pin directly on the track (right drawing).

CONNECTOR

FLANGE RECEPTACLE: Set up the EMI gasket in the connector groove.
Put the connector on the housing while introducing the bead pin into socket, then mount the fixtures of the flange.

SCREW RECEPTACLE: Screw the connector into the housing.
(Tooling and torque, see the following board)

TOOLING		TORQUE
SMA	Jack receptacle R282.341.010	2 N.m
	Plug receptacle R282.342	
BMA	Jack receptacle R282.341.010	2.9 N.m
	Plug receptacle R282.342	