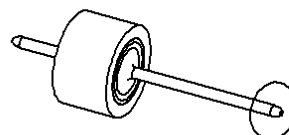
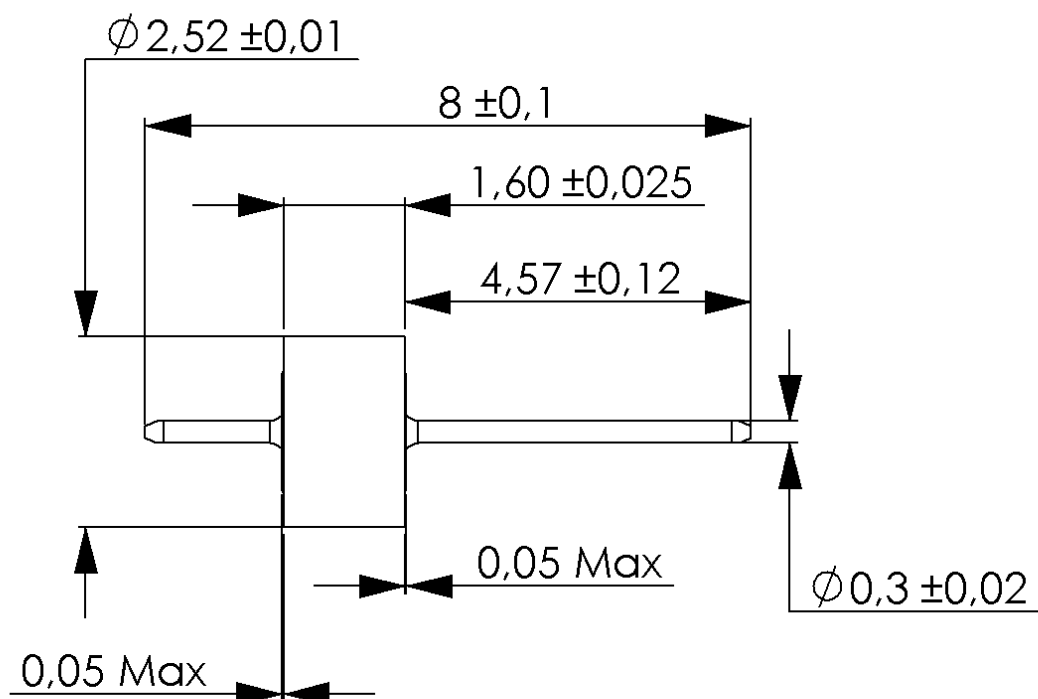

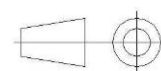


PAGE 1/3	ISSUE 1512A	SERIES ACCESSORY	PART NUMBER <b>R280751000X</b>
----------	-------------	---------------------	--------------------------------



scale: 1  


All dimensions are in mm.

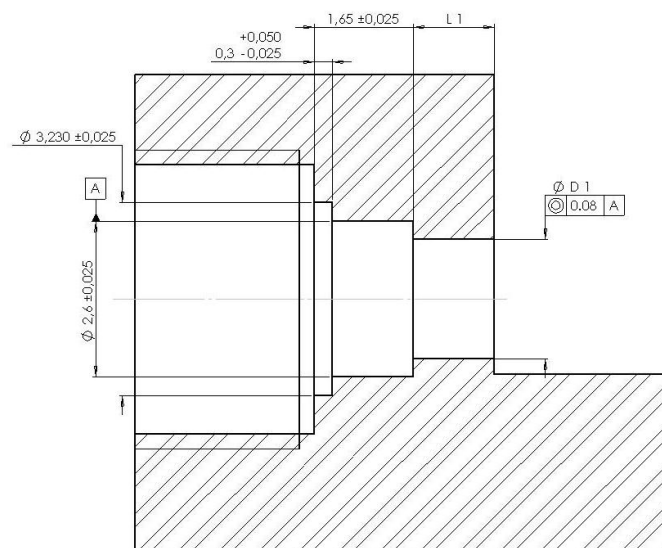
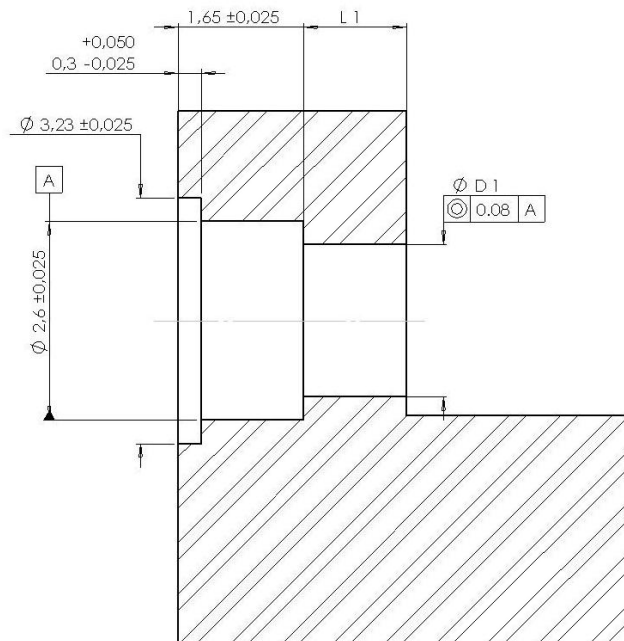


COMPONENTS	MATERIALS	PLATING (μm)
Body	<b>DILVER P1</b>	<b>Ni2 Au1.3</b>
Center contact	-	-
Outer contact	-	-
Insulator	-	-
Gasket	-	-
Others parts	-	-
Operating temperature	<b>-65/+200 °C</b>	
Weight	<b>0,05 g</b>	
Others characteristics	<b>Nominal Impedance: 50Ω</b> <b>Hermetic seal: 10<sup>-8</sup>Atm.cm<sup>3</sup>/s</b>	
Specifications	<b>RAD-GEN-CONN-001</b> <b>RAD-DET-CONN-020</b>	

## RECOMMENDED MONTING HOLE DETAIL

### FLANGE RECEPTACLE

PIN Ø 0.3



D 1 and L 1 dimensions have to be determined according to each application.

We advise of following cases: (see page 3)

- Using of R280 469 removable socket

D 1 =  $2 \pm 0.02$

L 1 =  $2.54 \pm 0.01$

- The bead pin is directly welded on the track

D 1 =  $0.7 \pm 0.02$

L 1 = from 1.02 to 3.99 according to customer's design criteria.

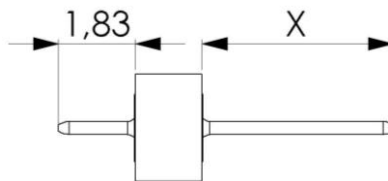
PAGE 3/3

ISSUE 1512A

SERIES  
ACCESSORY

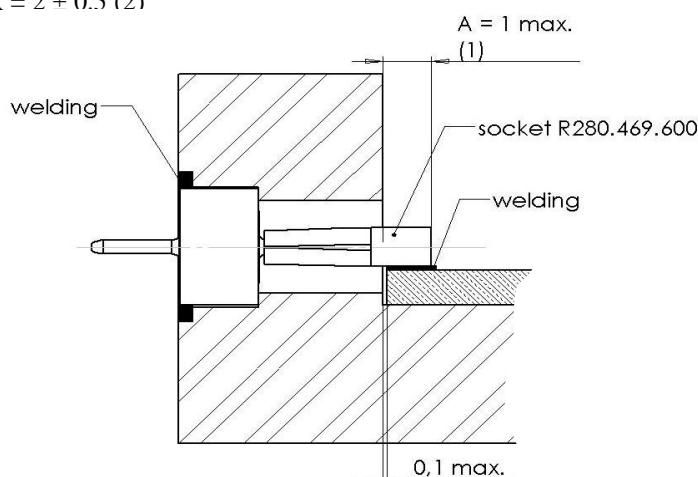
PART NUMBER **R280751000X**

## ASSEMBLY INSTRUCTIONS



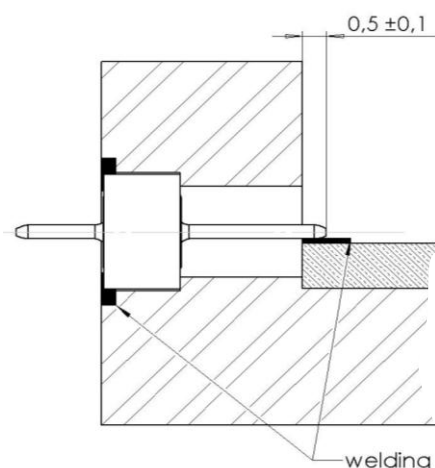
### MOUNTING A: WITH REMOVABLE CONTACT

$$X = 2 + 0.5 (2)$$



### MOUNTING B: WITH SEAL ONLY

$$X = L 1 + A$$



## GLASS SEAL

- 1 – Adjust X by cutting the pin if necessary.
- 2 – Introduce the glass bead into its housing as here above ( with the mounted socket.)
- 3 – Weld the ring by putting a welding wire in the groove.
- 4 – Weld the pin (or socket) on the track. Beware of putting too much welding!

**IMPORTANT:** for maximum RF characteristics the Link track/ pin must be as thin as possible. We advise you to respect rigourously the A dimension, by welding accurately the bead pin directly on the track (right drawing).

## CONNECTOR

**FLANGE RECEPTACLE:** Set up the EMI gasket in the connector groove.  
Put the connector on the housing while introducing the bead pin into socket, then mount the fixtures of the flange.

**SCREW RECEPTACLE:** Screw the connector into the housing.  
( Tooling and torque, see the following board)

TOOLING		TORQUE
SMA	Jack receptacle R282.341.010	2 N.m
	Plug receptacle R282.342	
BMA	Jack receptacle R282.341.010	2.9 N.m
	Plug receptacle R282.342	