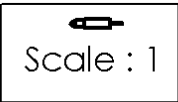
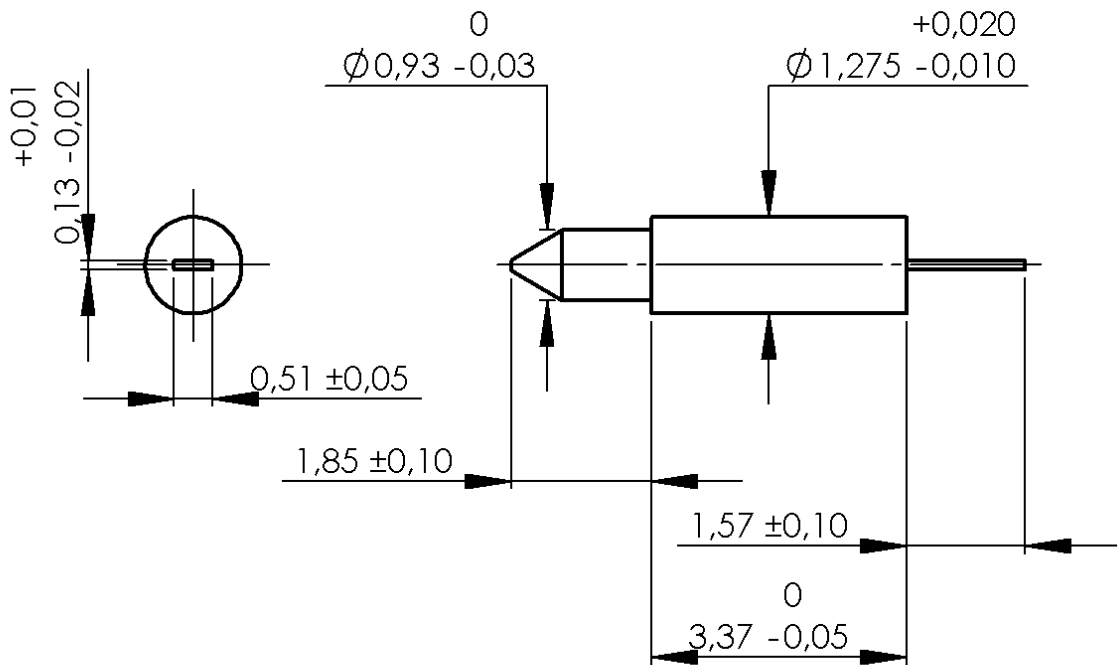
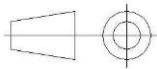


PAGE 1/1	ISSUE 1406A	SERIES SMA-X	PART NUMBER R280461200X
----------	-------------	--------------	-------------------------



All dimensions are in mm.



COMPONENTS	MATERIALS	PLATING (µm)
Body	-	-
Center contact	<b>BERYLLIUM COPPER</b>	<b>GOLD 2.5 OVER NICKEL 2</b>
Outer contact	-	-
Insulator	-	-
Gasket	-	-
Others parts	-	-
-	-	-
-	-	-
Operating temperature	<b>-65/+165</b>	°C
Weight	<b>0,0500</b>	g
Others characteristics	<b>Specifications: RAD-GEN-CONN-001 RAD-DET-CONN-020</b>	