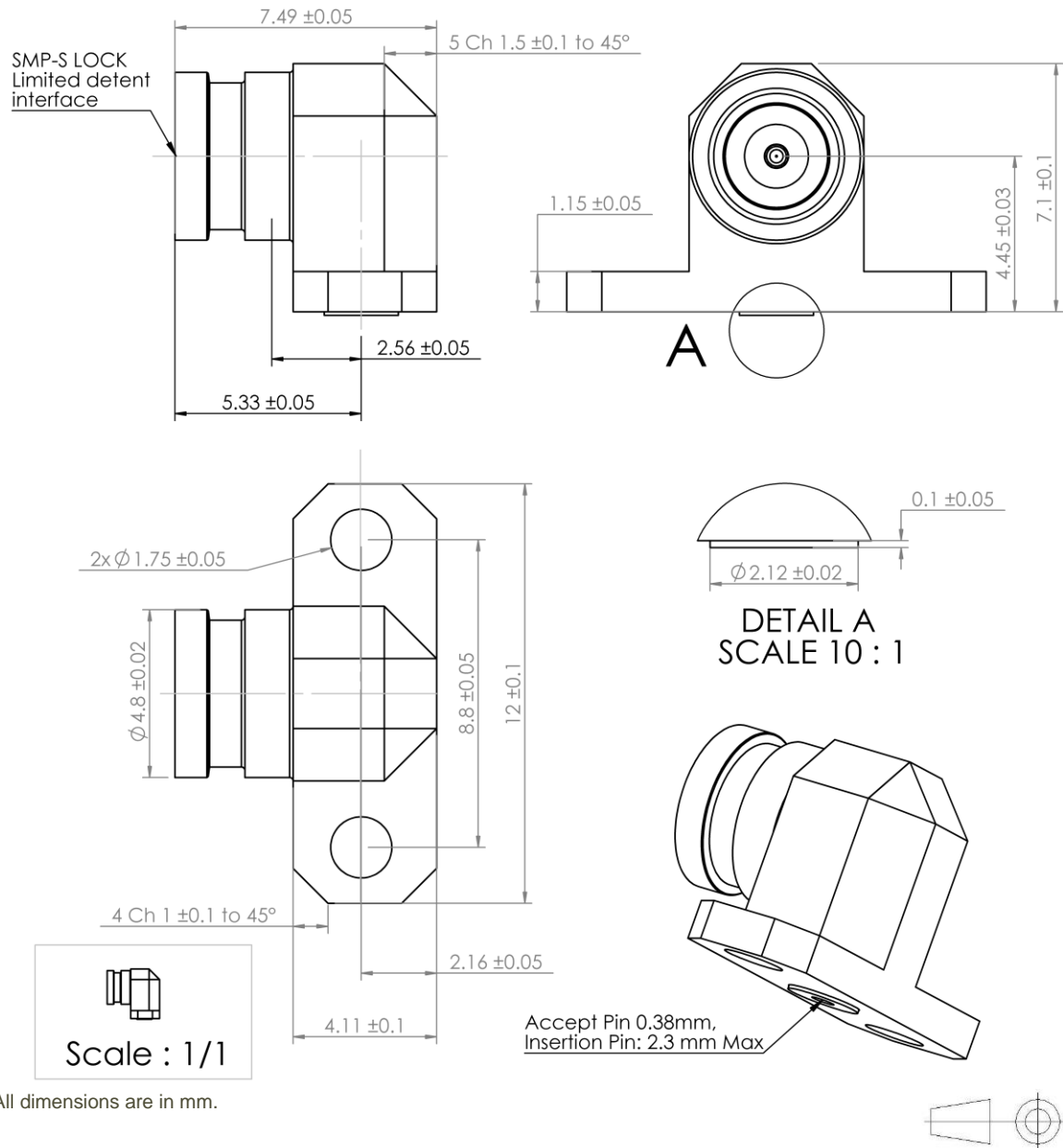


PAGE 1/2

ISSUE **2035A**

SERIES **SMP-S-LOCK**

PART NUMBER **R232L10001**



COMPONENTS	MATERIALS	PLATING (µm)
Body	BRASS	NPGR
Center contact	BERYLLIUM COPPER	GOLD 1.27 OVER NICKEL 1.27
Outer contact		
Insulator	PTFE	
Gasket		
Others parts		
-	-	-
-	-	-

PAGE 2/2

ISSUE **2035A**

SERIES **SMP-S-LOCK**

PART NUMBER **R232L10001**

PACKAGING

Standard	Unit	Other
1	-	Contact us

ELECTRICAL CHARACTERISTICS

Impedance	50	Ω
Frequency	0-2	GHz
VSWR	1.10 + 0,0000	x F(GHz) Maxi
Insertion loss	0.02+0.12	\sqrt{F} (GHz) dB Maxi
RF leakage	- (90	- F(GHz)) dB Maxi
Voltage rating	335	Vrms Maxi
Dielectric withstanding voltage	500	Vrms mini
Insulation resistance	5000	M Ω mini

MECHANICAL CHARACTERISTICS

Center contact retention		
Axial force – Mating End	6.8	N mini
Axial force – Opposite end	6.8	N mini
Torque	NA	N.cm mini
Recommended torque		
Mating	NA	N.cm
Panel nut	NA	N.cm
Mating life	100	Cycles Maxi
Weight	1,5500	g Maxi

ENVIRONMENTAL

Operating temperature	-55/+150	°C
Hermetic seal	NA	Atm.cm3/s
Panel leakage	NA	

SPECIFICATION

RAD-GEN-CONN 001
RAD-DET-CONN 019

OTHER CHARACTERISTICS

Assembly instruction:

Others: