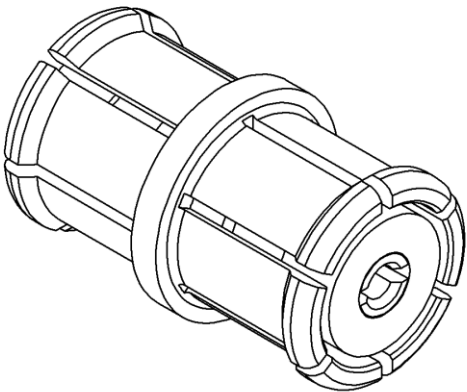
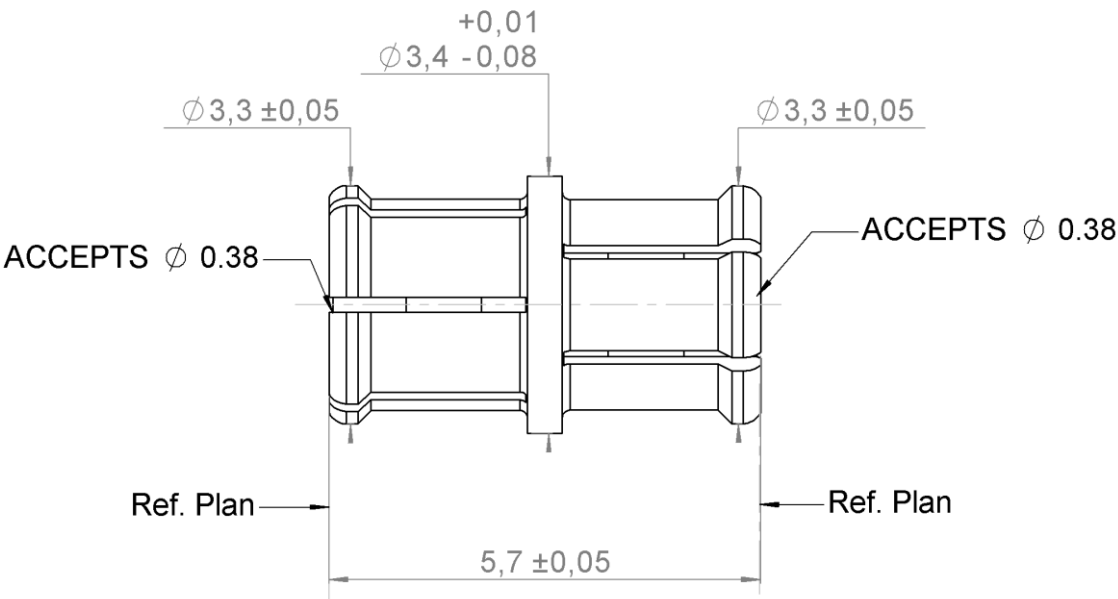
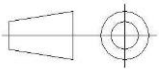


PAGE 1/3	ISSUE 2035A	SERIES SMP-S	PART NUMBER R232705200
----------	-------------	--------------	------------------------



All dimensions are in mm.



COMPONENTS	MATERIALS	PLATING (μm)
Body	BERYLLIUM COPPER	GOLD 1.3 OVER NICKEL2
Center contact	BERYLLIUM COPPER	GOLD 1.3 OVER NICKEL2
Outer contact		
Insulator	PTFE	
Gasket		
Others parts		
-	-	-
-	-	-

PAGE 2/3

ISSUE 2035A

SERIES SMP-S

PART NUMBER R232705200

PACKAGING

Standard	Unit	Other
1	-	Contact us

ELECTRICAL CHARACTERISTICS

Impedance	50	Ω
Frequency	0-40	GHz
VSWR	See* + 0,0000	x F(GHz) Maxi
Insertion loss	0.02+0.12	√F(GHz) dB Maxi
RF leakage	- (- F(GHz)) dB Maxi
Voltage rating	335	Vrms Maxi
Dielectric withstanding voltage	500	Vrms mini
Insulation resistance	5000	MΩ mini

MECHANICAL CHARACTERISTICS

Center contact retention	7	N mini
Axial force – Mating End	NA	N mini
Axial force – Opposite end	NA	N.cm mini
Torque		
Recommended torque		
Mating	NA	N.cm
Panel nut	NA	N.cm
Mating life	100	Cycles Maxi
Weight	0,1500	g Maxi

ENVIRONMENTAL

Operating temperature	-65/+165	°C
Hermetic seal		Atm.cm3/s
Panel leakage		

SPECIFICATION

RAD-GEN-CONN 001
RAD-DET-CONN 019

OTHER CHARACTERISTICS

Assembly instruction:

Others:

VSWR:

DC to 3 GHz: 1.15 max

3 to 26.5 GHz: 1.25 max

26.5 to 40 GHz: 1.5 max

ADDITIONAL INFORMATIONS MOUNTING AND REPLACEMENT INSTRUCTIONS

1 - INFORMATIONS

Mechanical durability: 100 cycles -> full detent connector .
: 500 cycles -> limited detent connector .
: 1000 cycles-> smooth bore connector .

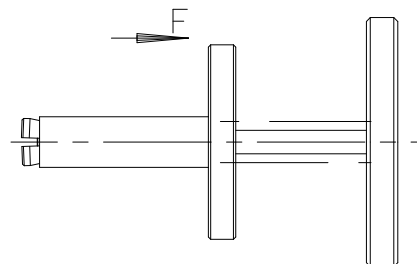
Axial misalignement = 0/+0.25 mm.
Radial misalignement = ±0.25mm.

Force to:	engage	-	disengage	-	connector
Full det:	66.75 N maxi	-	22.25 N mini	-	FULL DETENT
Limited:	44.5 N maxi	-	8.9 N mini	-	LIMITED DET.
Smooth b:	8.9 N maxi	-	2.225 N mini	-	SMOOTH BORE

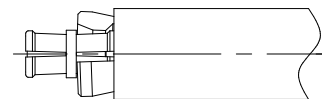
2 - MOUNTING AND REPLACEMENT

Adaptor must be mounted or removed with tooling R282.918.100.

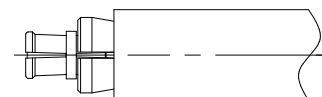
2-1 - Push in F direction to open the tool .



2-2 - Place the adaptor into the tool ,
until it bottoms against .



2-3 - Push on the adaptor , and release
the smallest tool diameter.
(the force to fixe the adaptor is
applied by a spring) .



2-4 - Push on the biggest tool diameter to place the adaptor .
- To remove the adaptor , pull off on the biggest tool diameter .