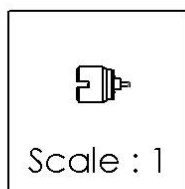
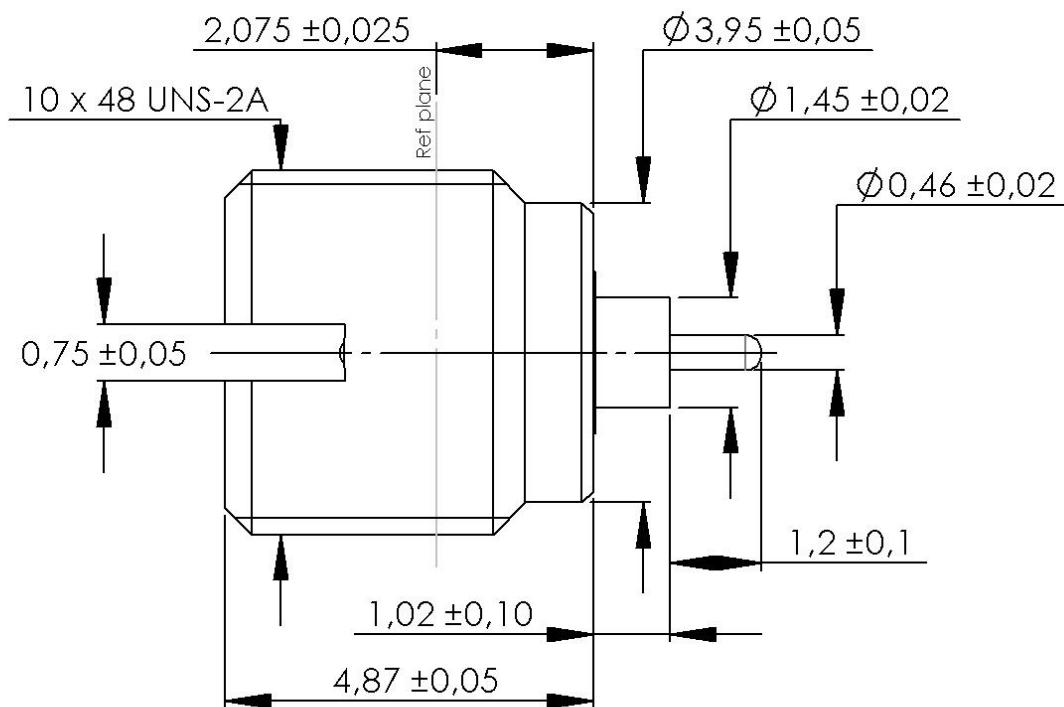


PAGE 1/3

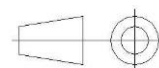
ISSUE  
17-04-23B

SERIES **SMP-S**

PART NUMBER **R232561001**



All dimensions are in mm.



COMPONENTS	MATERIALS	PLATING (µm)
Body	<b>STAINLESS STEEL</b>	<b>PASSIVATED</b>
Center contact	<b>BERYLLIUM COPPER</b>	<b>GOLD 1.27 OVER NICKEL 1.27</b>
Outer contact		
Insulator	<b>PTFE</b>	
Gasket		
Others parts		
-	-	-
-	-	-

PAGE <b>2/3</b>	ISSUE <b>17-04-23B</b>	SERIES <b>SMP-S</b>	PART NUMBER <b>R232561001</b>
-----------------	---------------------------	---------------------	-------------------------------

### PACKAGING

Standard	Unit	Other
<b>1</b>	-	<b>Contact us</b>

### ELECTRICAL CHARACTERISTICS

Impedance	<b>50</b>	$\Omega$
Frequency	<b>0-12</b>	GHz
VSWR	<b>1.3 + 0,000</b>	x F(GHz) Maxi
Insertion loss	<b>0.02+0.12</b>	$\sqrt{F}$ (GHz) dB Maxi
RF leakage	- ( <b>NA</b> )	- F(GHz)) dB Maxi
Voltage rating	<b>335</b>	Vrms Maxi
Dielectric withstanding voltage	<b>500</b>	Vrms mini
Insulation resistance	<b>5000</b>	M $\Omega$ mini

### MECHANICAL CHARACTERISTICS

Center contact retention		
Axial force – Mating End	<b>NA</b>	N mini
Axial force – Opposite end	<b>NA</b>	N mini
Torque	<b>NA</b>	N.cm mini
Recommended torque		
Mating	<b>NA</b>	N.cm
Panel nut	<b>90</b>	N.cm

Mating life	<b>100</b>	Cycles maxi
Weight	<b>0,800</b>	g Maxi

### ENVIRONMENTAL

Operating temperature	<b>-65/+165</b>	°C
Hermetic seal	<b>NA</b>	Atm.cm3/s
Panel leakage	<b>NA</b>	

### SPECIFICATION

RAD-DET-CONN-019  
RAD-GEN-CONN-001

Assembly instruction: **See additional informations**

**Tooling: R282339001 or  
R282360001**

## CUSTOMER'S APPROVAL

Department or  
company's stamp

Name :

Date :

Copy to send back to  
RADIALL S.A. BEFORE :

PAGE 3/3

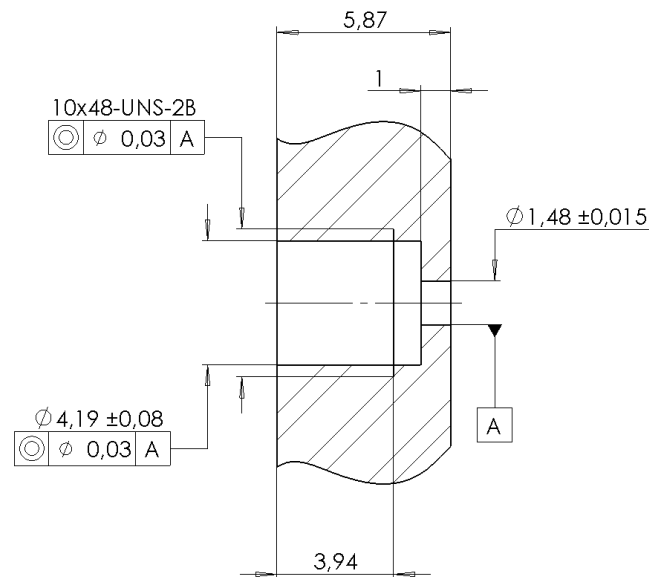
 ISSUE  
17-04-23B

SERIES SMP-S

PART NUMBER R232561001

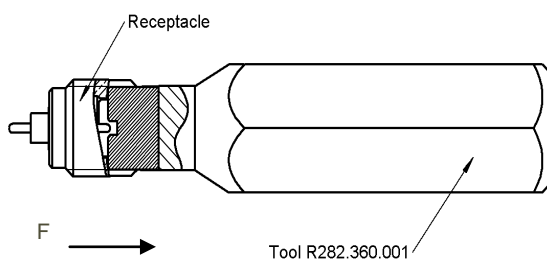
### ADDITIONAL INFORMATION MOUNTING AND REPLEACEMENT INSTRUCTIONS

#### Panel mounting hole



**1.**Connector must be screwed or unscrewed with adapted torque driver R282.339.001 (recommanded coupling torque : 90 Ncm)  
Screw driver : R282.360.001

**2.**Slide on the connector in F direction until it stops against the tool.



**3.**Screw the whole into the housing until activation of the torque driver.

**4.**Withdraw the tool and solder the center contact

