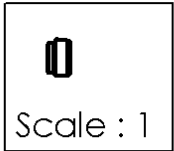
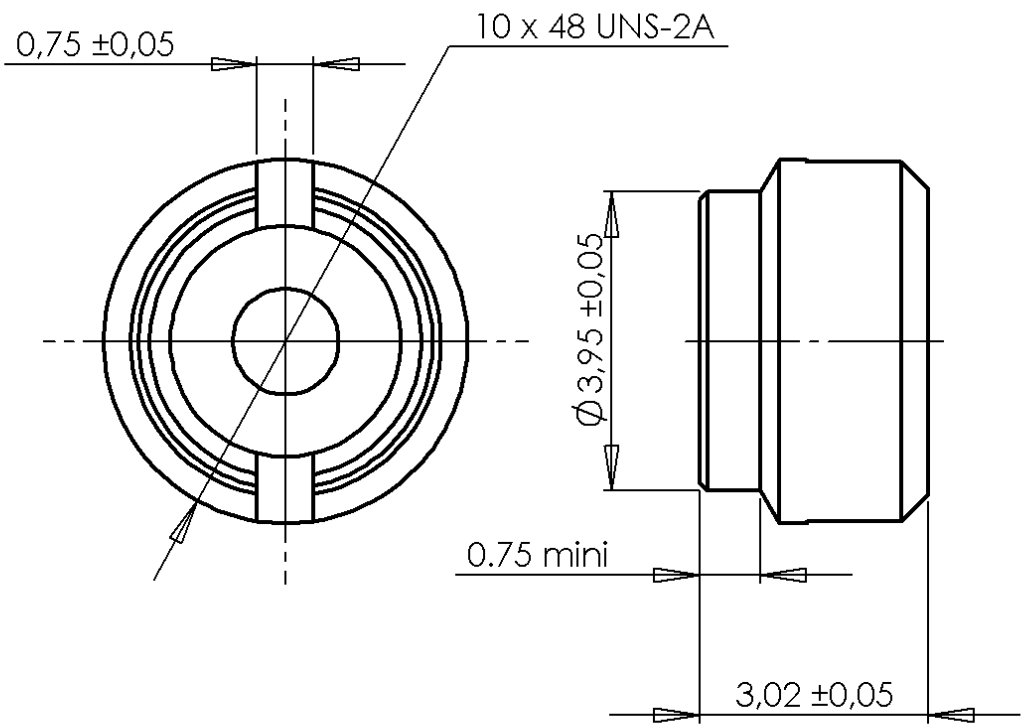
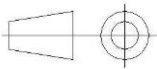
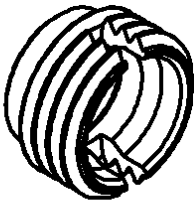


PAGE 1/2	ISSUE 2035A	SERIES SMP-S	PART NUMBER R232550301
----------	-------------	--------------	------------------------



All dimensions are in mm.



COMPONENTS	MATERIALS	PLATING (µm)
Body	STAINLESS STEEL	PASSIVATED.
Center contact		
Outer contact		
Insulator		
Gasket		
Others parts		
-	-	-
-	-	-

PAGE 2/2

ISSUE **2035A**

SERIES **SMP-S**

PART NUMBER **R232550301**

PACKAGING

Standard	Unit	Other
1	-	Contact us

ELECTRICAL CHARACTERISTICS

Impedance	NA	Ω
Frequency	NA	GHz
VSWR	NA + 0,0000	x F(GHz) Maxi
Insertion loss	NA	\sqrt{F} (GHz) dB Maxi
RF leakage	- (NA	- F(GHz)) dB Maxi
Voltage rating	NA	Vrms Maxi
Dielectric withstanding voltage	NA	Vrms mini
Insulation resistance	NA	M Ω mini

MECHANICAL CHARACTERISTICS

Center contact retention		
Axial force – Mating End	NA	N mini
Axial force – Opposite end	NA	N mini
Torque	NA	N.cm mini
Recommended torque		
Mating	NA	N.cm
Panel nut	90	N.cm
Mating life	500	Cycles Maxi
Weight	0,0200	g Maxi

ENVIRONMENTAL

Operating temperature	-65/+165	°C
Hermetic seal		Atm.cm3/s
Panel leakage		

SPECIFICATION

RAD-GEN-CONN 001
RAD-DET-CONN 019

OTHER CHARACTERISTICS

Assembly instruction:

Others: