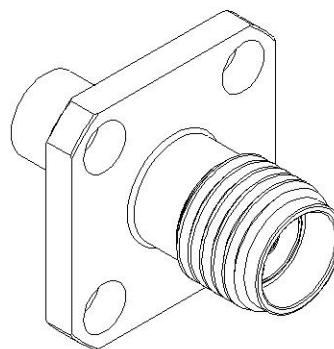
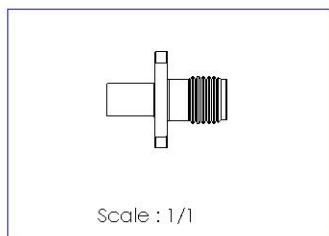
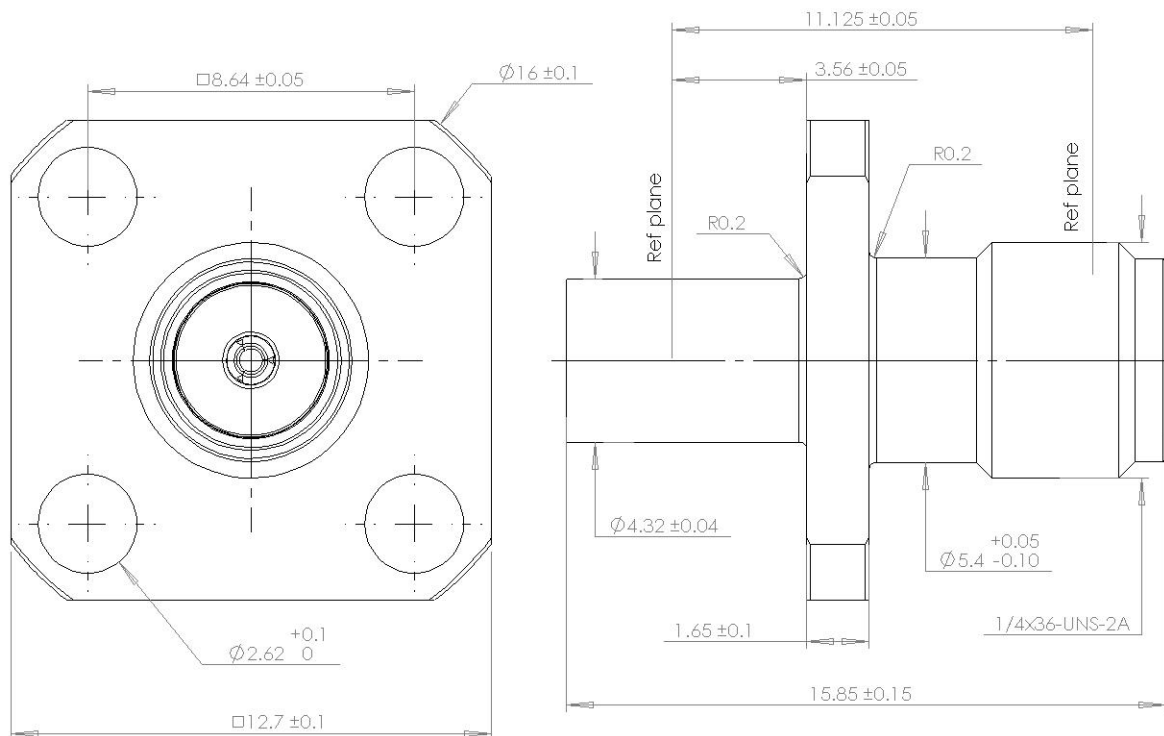


PAGE 1/2	ISSUE 2035A	SERIES ADAPTER-S	PART NUMBER R191843631
----------	-------------	---------------------	------------------------

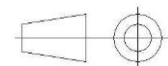


PANEL CUT OUT

A DIA
B DIA
4 holes
C

	mm	
	Maxi	mini
A	4.55	4.45
B	2.8	2.7
C	8.69	8.59

All dimensions are in mm. Tolerances according ISO 2768 m-H



COMPONENTS	MATERIALS	PLATING (μm)
Body	BERYLLIUM COPPER	GOLD 1.3 OVER NICKEL2
Center contact	BERYLLIUM COPPER	GOLD 1.3 OVER NICKEL2
Outer contact		
Insulator	PTFE	
Gasket		
Others parts		
-	-	-
-	-	-

PAGE 2/2	ISSUE 2035A	SERIES ADAPTER-S	PART NUMBER R191843631
-----------------	--------------------	----------------------------	-------------------------------

PACKAGING

Standard	Unit	Other
1	Contact us	Contact us

ELECTRICAL CHARACTERISTICS

Impedance	50	Ω
Frequency	DC-18	GHz
VSWR	1.3 + 0.0000	x F(GHz) Maxi
Insertion loss	0.02+0.12	\sqrt{F} (GHz) dB Maxi
RF leakage	- (NA)	- F(GHz)) dB Maxi
Voltage rating	335	Veff Maxi
Dielectric withstanding voltage	500	Veff mini
Insulation resistance	5000	M Ω mini

MECHANICAL CHARACTERISTICS

Center contact retention		
Axial force – Mating End	6.7	N mini
Axial force – Opposite end	6.7	N mini
Torque	NA	N.cm mini
Recommended torque		
Mating	0	N.cm
	0	N.cm
	0	N.cm
Panel nut	NA	N.cm
Mating life	100	Cycles mini
Weight	3,8000	g

ENVIRONMENTAL

Operating	-65/+165	°C
Hermetic seal	NA	Atm.cm3/s
Panel leakage	NA	

SPECIFICATION

RAD-GEN-CONN 001
RAD-DET-CONN 019

OTHER CHARACTERISTICS