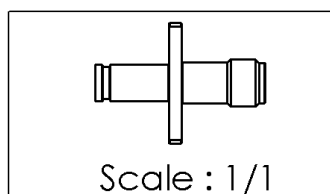
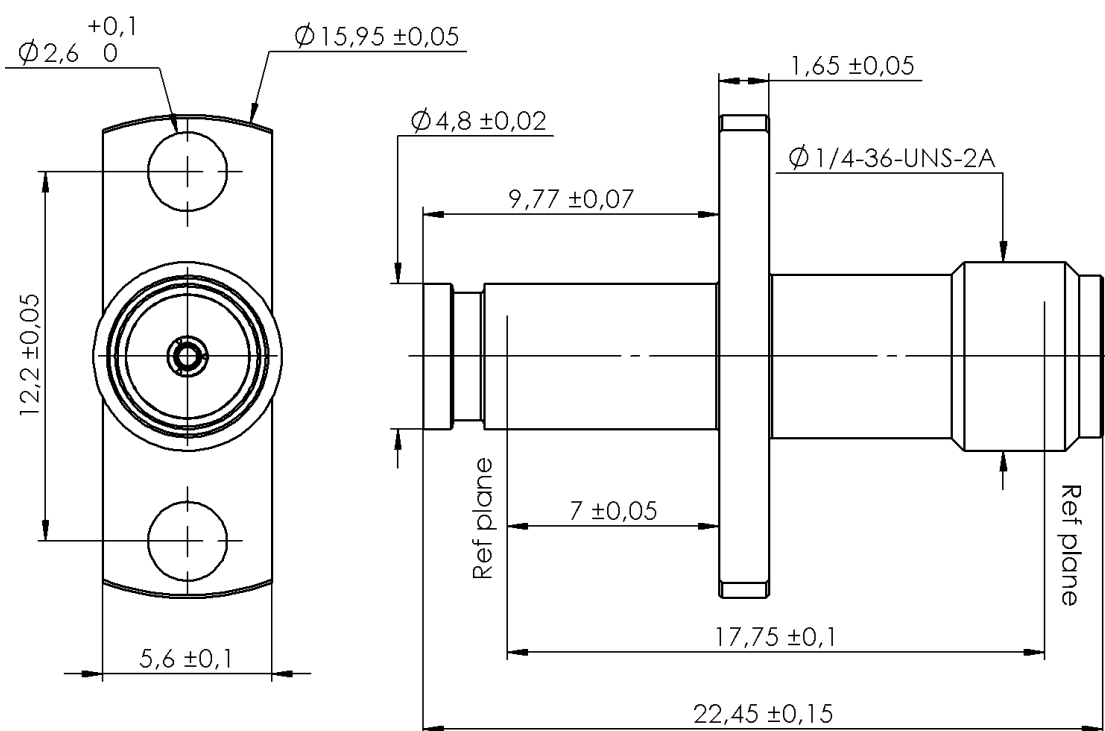
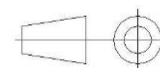


PAGE 1/2	ISSUE 2034A	SERIES ADAPT-S	PART NUMBER R191593600
----------	-------------	----------------	------------------------



All dimensions are in mm. Tolerances according ISO 2768 m-H



COMPONENTS	MATERIALS	PLATING (μm)
Body	BRASS	NPGR
Center contact	BERYLLIUM COPPER	GOLD 1.3 OVER NICKEL2
Outer contact		
Insulator	PTFE	
Gasket		
Others parts		
-	-	-
-	-	-

PAGE 2/2	ISSUE 2034A	SERIES ADAPT-S	PART NUMBER R191593600
-----------------	--------------------	-----------------------	-------------------------------

PACKAGING

Standard	Unit	Other
	Contact us	Contact us

ELECTRICAL CHARACTERISTICS

Impedance	50	Ω
Frequency	0-22	GHz
VSWR	1.1 + 0.0070	x F(GHz) Maxi
Insertion loss	0.02+0.03	\sqrt{F} (GHz) dB Maxi
RF leakage	- (90	- F(GHz)) dB Maxi
Voltage rating	335	Veff Maxi
Dielectric withstanding voltage	500	Veff mini
Insulation resistance	5000	M Ω mini

MECHANICAL CHARACTERISTICS

Center contact retention		
Axial force – Mating End	6.7	N mini
Axial force – Opposite end	6.7	N mini
Torque	NA	N.cm mini
Recommended torque		
Mating	0	N.cm
	0	N.cm
	0	N.cm
Panel nut	NA	N.cm
Mating life	100	Cycles mini
Weight	3,7700	gMaxi

ENVIRONMENTAL

Operating	-55/+150	°C
Hermetic seal	NA	Atm.cm3/s
Panel leakage	NA	

SPECIFICATION

RAD-GEN-CONN 001
RAD-DET-CONN 019

OTHER CHARACTERISTICS

Use SMP Kit of calibration with
S1P Parameter for RF Measurements