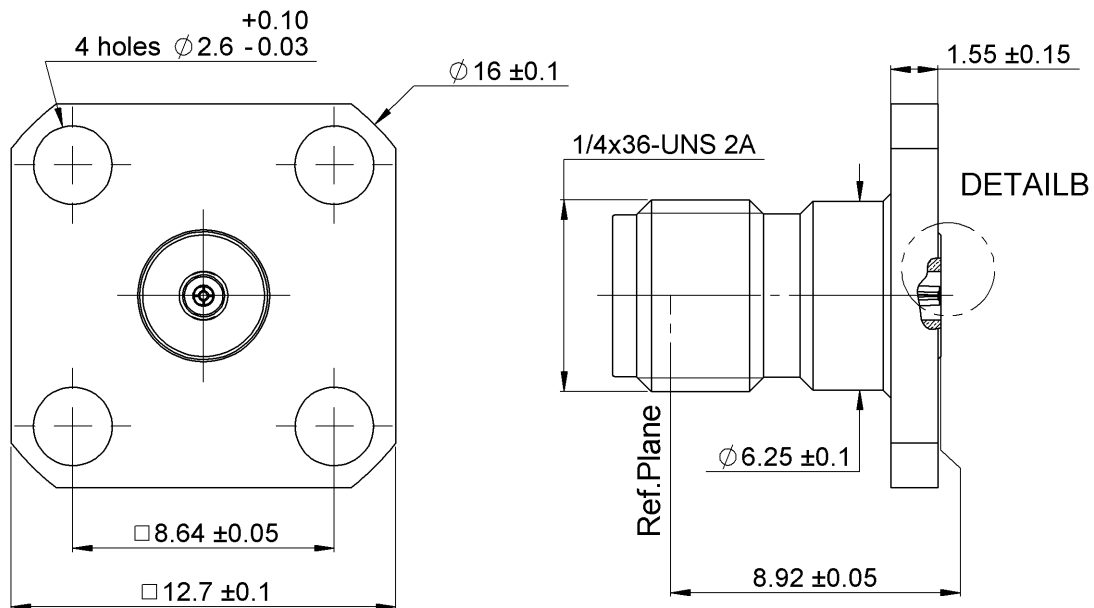


PAGE 1/2

ISSUE 2033A

SERIES SMA2.9

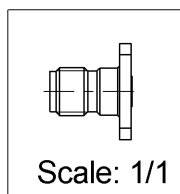
PART NUMBER R127842001X



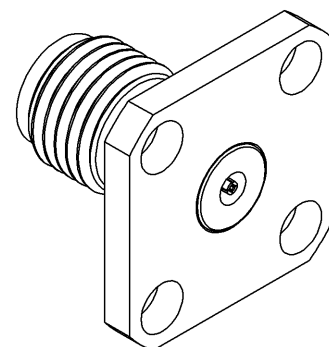
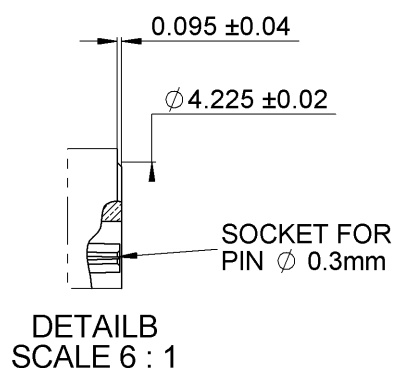
**PANEL CUT OUT**

A DIA  
B DIA  
4 holes

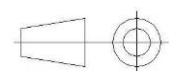
	mm	
	Maxi	mini
A	1.63	1.60
B	2.7	2.6
C	8.69	8.59



**Use R280 760 000 glass bead  
for hermetic application**



All dimensions are in mm.



COMPONENTS	MATERIALS	PLATING (µm)
Body	STAINLESS STEEL	PASSIVATED.
Center contact	BERYLLIUM COPPER	GOLD 1.3 OVER NICKEL2
Outer contact	BRASS	GOLD 1.3 OVER NICKEL2
Insulator	ULTEM	
Gasket		
Others parts	-	-
-	-	-
-	-	-

PAGE 2/2

ISSUE 2033A

SERIES SMA2.9

PART NUMBER R127842001X

## PACKAGING

Standard	Unit	Other
1	-	Contact us

## ELECTRICAL CHARACTERISTICS

Impedance	50	Ω
Frequency	0-40	GHz
VSWR	1.05 + 0,0050	x F(GHz) Maxi
Insertion loss	0.02+0.03	√F(GHz) dB Maxi
RF leakage	- ( 90	- F(GHz)) dB Maxi
Voltage rating	350	Vrms Maxi
Dielectric withstanding voltage	750	Vrms mini
Insulation resistance	5000	MΩ mini

## ENVIRONMENTAL

Operating temperature	-65/+165	°C
Hermetic seal	NA	Atm.cm3/s
Panel leakage	NA	

## MECHANICAL CHARACTERISTICS

Center contact retention		
Axial force – Mating End	27	N mini
Axial force – Opposite end	27	N mini
Torque	NA	N.cm mini
Recommended torque		
Mating	80-115	N.cm
Panel nut	NA	N.cm
Mating life	500	Cycles Maxi
Weight	3,5000	g Maxi

## SPECIFICATION

RAD-GEN-CONN 001  
RAD-DET-CONN 006

## OTHER CHARACTERISTICS

Assembly instruction:NA

Others: