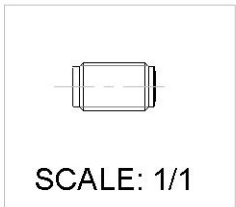
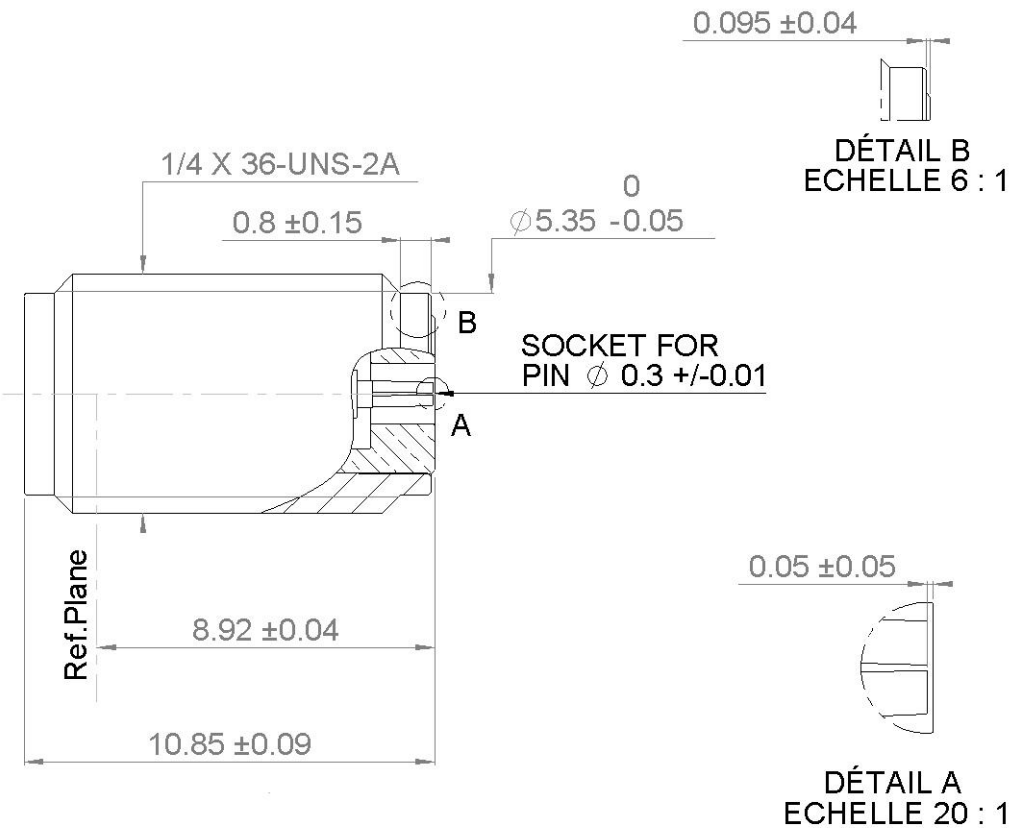
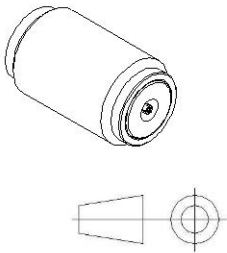


PAGE 1/2	ISSUE 2033A	SERIES SMA2.9	PART NUMBER R127841001X
----------	-------------	---------------	-------------------------



Use R280 760 000 glass bead
for hermetic application



All dimensions are in mm.

COMPONENTS	MATERIALS	PLATING (µm)
Body	STAINLESS STEEL	PASSIVATED.
Center contact	BERYLLIUM COPPER	GOLD 1.3 OVER NICKEL2
Outer contact		
Insulator	ULTEM	
Gasket		
Others parts	BRASS	GOLD 1.3 OVER NICKEL2
-	-	-
-	-	-

PAGE 2/2

ISSUE 2033A

SERIES SMA2.9

PART NUMBER R127841001X

PACKAGING

Standard	Unit	Other
1	-	Contact us

ELECTRICAL CHARACTERISTICS

Impedance	50	Ω
Frequency	0-40	GHz
VSWR	1.05 + 0,0050	x F(GHz) Maxi
Insertion loss	0.02+0.03	√F(GHz) dB Maxi
RF leakage	- (90	- F(GHz)) dB Maxi
Voltage rating	350	Vrms Maxi
Dielectric withstanding voltage	750	Vrms mini
Insulation resistance	5000	MΩ mini

ENVIRONMENTAL

Operating temperature	-65/+165	°C
Hermetic seal	NA	Atm.cm3/s
Panel leakage	NA	

MECHANICAL CHARACTERISTICS

Center contact retention		
Axial force – Mating End	27	N mini
Axial force – Opposite end	27	N mini
Torque	NA	N.cm mini
Recommended torque		
Mating	80-115	N.cm
Panel nut	190	N.cm
Mating life	500	Cycles Maxi
Weight	2,0000	g Maxi

SPECIFICATION

RAD-GEN-CONN 001
RAD-DET-CONN 006

OTHER CHARACTERISTICS

Assembly instruction:

Others: