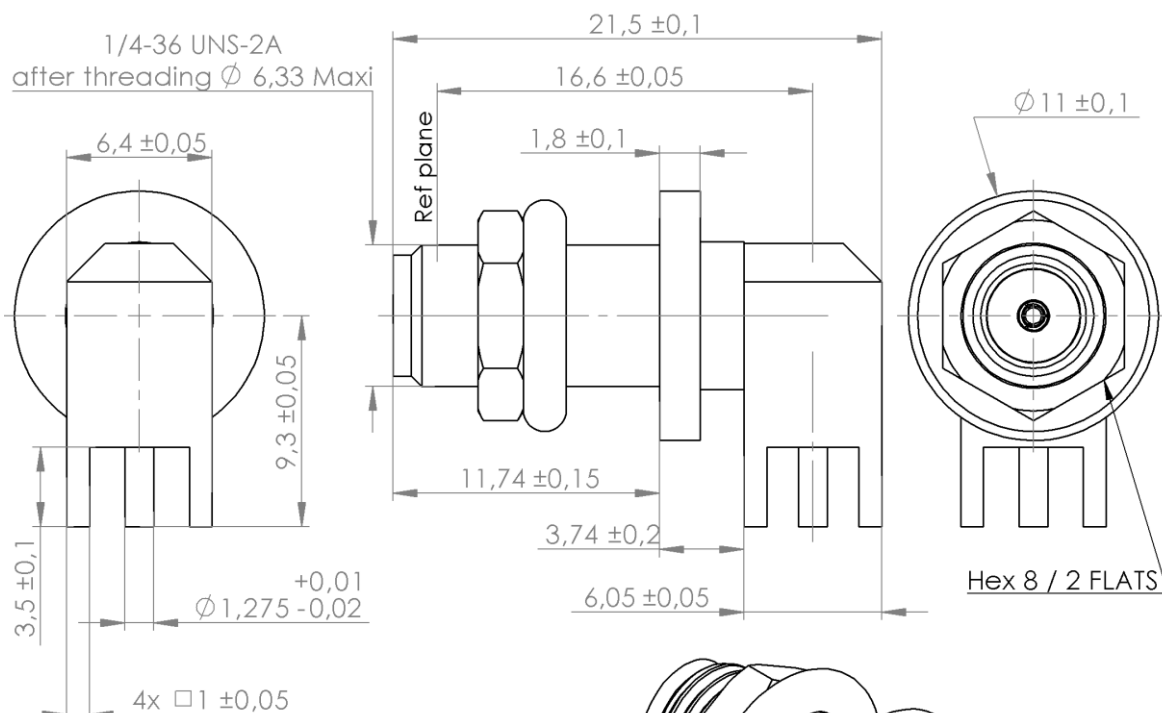


PAGE 1/2

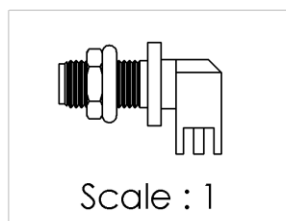
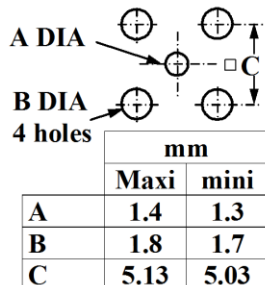
ISSUE 2032A

SERIES SMA-S

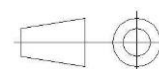
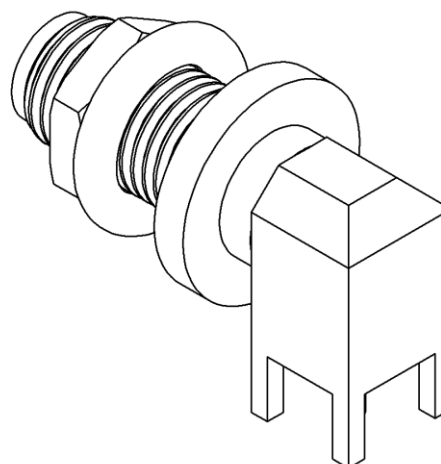
PART NUMBER R126680034



PCB CUT OUT



All dimensions are in mm.



COMPONENTS	MATERIALS	PLATING (μ m)
Body	BERYLLIUM COPPER	GOLD 2.54 OVER NICKEL 1.27
Center contact	BERYLLIUM COPPER	GOLD 2.54 OVER NICKEL 1.27
Outer contact		
Insulator	PTFE	
Gasket	SILICONE	
Others parts	STAINLESS STEEL	GOLD 0.5 OVER NICKEL 2
-	-	-
-	-	-

PAGE 2/2

ISSUE 2032A

SERIES SMA-S

PART NUMBER R126680034

PACKAGING

Standard	Unit	Other
1	-	Contact us

ELECTRICAL CHARACTERISTICS

Impedance	50	Ω
Frequency	DC-2	GHz
VSWR	1.15 + 0,0000	x F(GHz) Maxi
Insertion loss	0.02+0.1	√F(GHz) dB Maxi
RF leakage	- (90	- F(GHz)) dB Maxi
Voltage rating	335	Vrms Maxi
Dielectric withstanding voltage	1000	Vrms mini
Insulation resistance	5000	MΩ mini

ENVIRONMENTAL

Operating temperature	-65/+125	°C
Hermetic seal	NA	Atm.cm3/s
Panel leakage	NA	

MECHANICAL CHARACTERISTICS

Center contact retention		
Axial force – Mating End	27	N mini
Axial force – Opposite end	NA	N mini
Torque	NA	N.cm mini
Recommended torque		
Mating	80-120	N.cm
Panel nut	150	N.cm
Mating life	500	Cycles Maxi
Weight	6,4800	g Maxi

SPECIFICATION

According to ESCC 3402
According to ESCC 3402 002

OTHER CHARACTERISTICS

Assembly instruction:

Others: