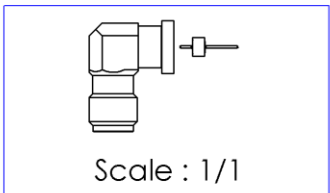
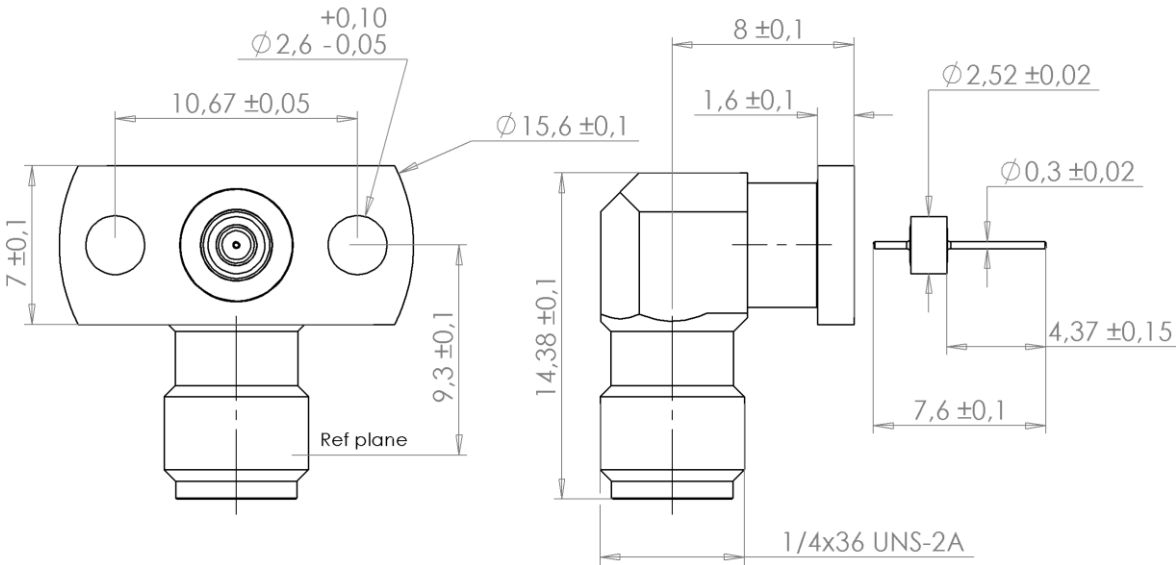


PAGE 1/2

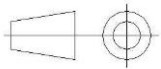
ISSUE 2032A

SERIES SMA-S

PART NUMBER R126660014



All dimensions are in mm.



COMPONENTS	MATERIALS	PLATING ( $\mu\text{m}$ )
Body	<b>BERYLLIUM COPPER</b>	<b>GOLD 1.3 OVER NICKEL2</b>
Center contact	<b>BERYLLIUM COPPER</b>	<b>GOLD 1.3 OVER NICKEL2</b>
Outer contact	<b>BRASS.</b>	<b>GOLD 1.3 OVER NICKEL2</b>
Insulator	<b>PTFE</b>	
Gasket		
Others parts		
-	-	-
-	-	-

PAGE 2/2

ISSUE 2032A

SERIES SMA-S

PART NUMBER R126660014

### PACKAGING

Standard	Unit	Other
1	-	Contact us

### ELECTRICAL CHARACTERISTICS

Impedance		50	Ω
Frequency		DC-8	GHz
VSWR	1.06	+	0,0100
Insertion loss		0.02+	* x F(GHz) Maxi
RF leakage	- (	70	- F(GHz)) dB Maxi
Voltage rating		500	Vrms Maxi
Dielectric withstanding voltage		1000	Vrms mini
Insulation resistance		5000	MΩ mini

### MECHANICAL CHARACTERISTICS

Center contact retention		27	N mini
Axial force – Mating End		NA	N mini
Axial force – Opposite end		NA	N.cm mini
Torque			
Recommended torque			
Mating	80-120		N.cm
Panel nut	NA		N.cm
Mating life	500		Cycles Maxi
Weight	4,4000		g Maxi

### ENVIRONMENTAL

Operating temperature	-65 /+105	°C
Hermetic seal	10-7	Atm.cm3/s
Panel leakage	NA	

### SPECIFICATION

For connector: According to ESCC 3402 002

For glass bead: RAD-DET-CONN-020

### OTHER CHARACTERISTICS

Assembly instruction:

Others: