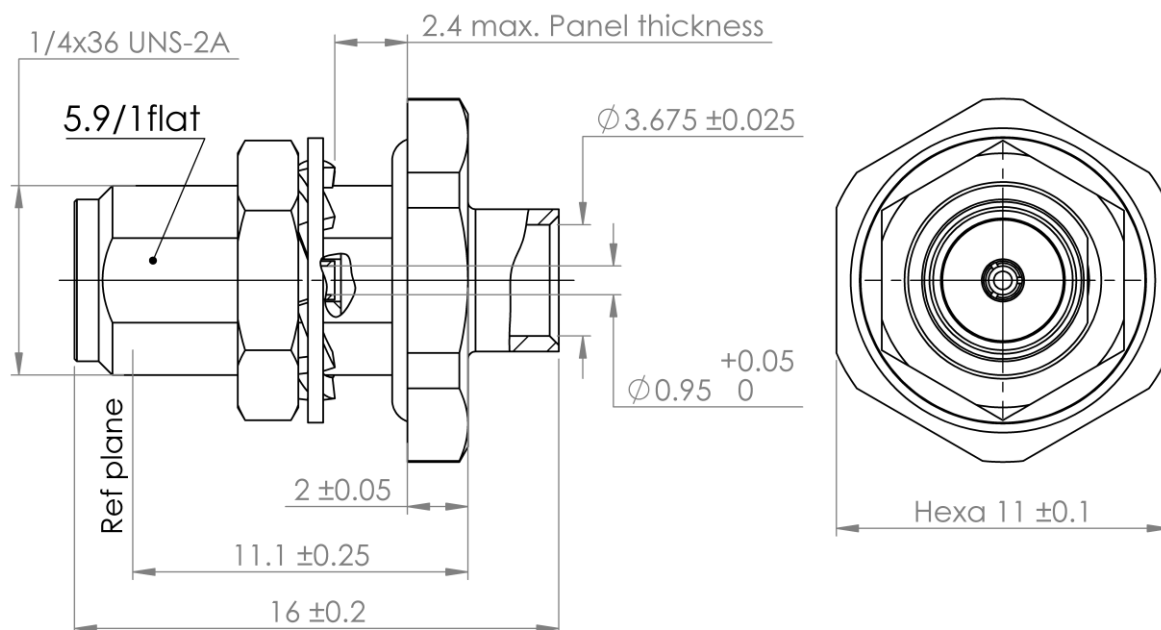


PAGE 1/2

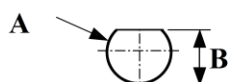
ISSUE 2032A

SERIES SMA-X

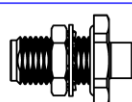
PART NUMBER R125325000X



PANEL CUT OUT

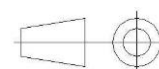
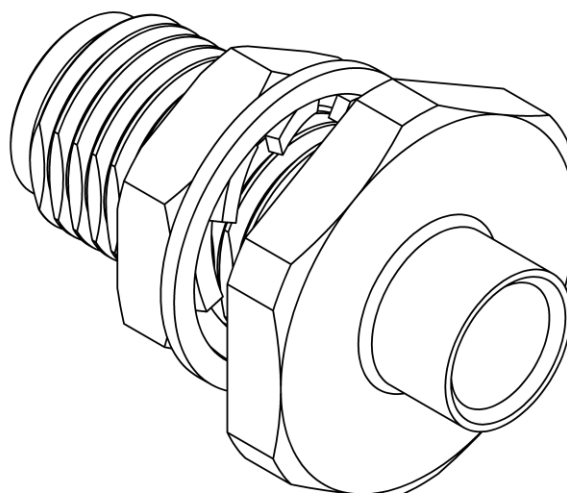


| | mm | |
|---|------|------|
| | Maxi | mini |
| A | 6.5 | 6.4 |
| B | 6.15 | 6 |



Scale : 1/1

All dimensions are in mm.



| COMPONENTS | MATERIALS | PLATING (µm) |
|----------------|------------------|------------------------|
| Body | STAINLESS STEEL | GOLD 1.3 OVER NICKEL2 |
| Center contact | BERYLLIUM COPPER | GOLD 1.3 OVER NICKEL2 |
| Outer contact | | |
| Insulator | PTFE | |
| Gasket | SILICONE RUBBER | |
| Others parts | BRASS. | GOLD 0.5 OVER NICKEL 2 |
| - | - | - |
| - | - | - |

PAGE 2/2

ISSUE 2032A

SERIES SMA-X

PART NUMBER R125325000X

PACKAGING

| Standard | Unit | Other |
|----------|------|------------|
| 1 | - | Contact us |

ELECTRICAL CHARACTERISTICS

| | | |
|---------------------------------|---------------|-------------------|
| Impedance | 50 | Ω |
| Frequency | 0-18 | GHz |
| VSWR | 1.05 + 0,0080 | x F(GHz) Maxi |
| Insertion loss | 0.02+0.03 | √F(GHz) dB Maxi |
| RF leakage | - (90 | - F(GHz)) dB Maxi |
| Voltage rating | 500 | Vrms Maxi |
| Dielectric withstanding voltage | 1000 | Vrms mini |
| Insulation resistance | 5000 | MΩ mini |

MECHANICAL CHARACTERISTICS

| | | |
|----------------------------|--------|-------------|
| Center contact retention | | |
| Axial force – Mating End | NA | N mini |
| Axial force – Opposite end | NA | N mini |
| Torque | NA | N.cm mini |
| Recommended torque | | |
| Mating | 80/120 | N.cm |
| Panel nut | 150 | N.cm |
| Mating life | 500 | Cycles Maxi |
| Weight | 3,9000 | g Maxi |

ENVIRONMENTAL

| | | |
|-----------------------|----------|-----------|
| Operating temperature | -65/+165 | °C |
| Hermetic seal | NA | Atm.cm3/s |
| Panel leakage | NA | |

SPECIFICATION

RAD-GEN-CONN 001
RAD-DET-CONN 003

OTHER CHARACTERISTICS

Assembly instruction: **Solder 01**

Others: