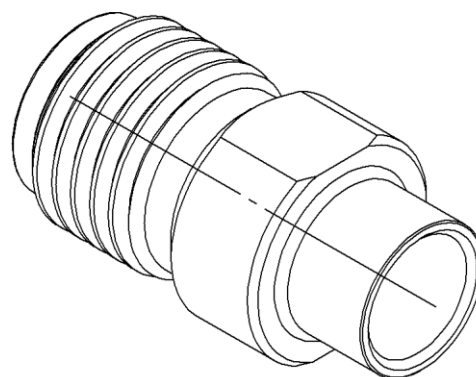
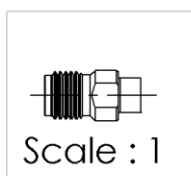
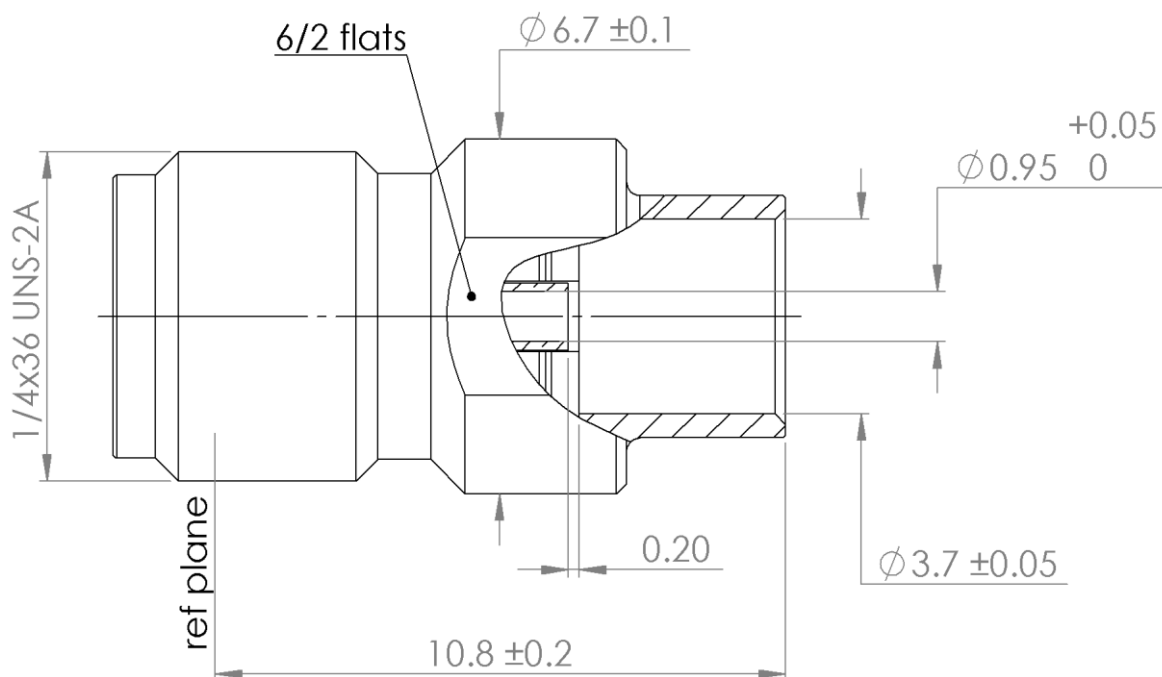


PAGE 1/2

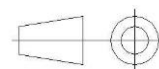
ISSUE **2013A.**

SERIES **SMA-X**

PART NUMBER **R125222000X**



All dimensions are in mm.



COMPONENTS	MATERIALS	PLATING (μm)
Body	STAINLESS STEEL	GOLD 1.3 OVER NICKEL2
Center contact	BERYLLIUM COPPER	GOLD 1.3 OVER NICKEL2
Outer contact		
Insulator	PTFE	
Gasket		
Others parts		
-	-	-
-	-	-

PAGE 2/2

ISSUE 2013A.

SERIES SMA-X

PART NUMBER R125222000X

PACKAGING

Standard	Unit	Other
1	-	Contact us

ELECTRICAL CHARACTERISTICS

Impedance	50	Ω
Frequency	0-18	GHz
VSWR	1.07 + 0,0080	x F(GHz) Maxi
Insertion loss	0.02+0.03	√F(GHz) dB Maxi
RF leakage	- (90	- F(GHz)) dB Maxi
Voltage rating	500	Vrms Maxi
Dielectric withstanding voltage	750	Vrms mini
Insulation resistance	5000	MΩ mini

MECHANICAL CHARACTERISTICS

Center contact retention	NA	N mini
Axial force – Mating End	NA	N mini
Axial force – Opposite end	NA	N mini
Torque	NA	N.cm mini
Recommended torque		
Mating	80-120	N.cm
Panel nut	NA	N.cm
Mating life	500	Cycles Maxi
Weight	1,7000	g Maxi

ENVIRONMENTAL

Operating temperature	-65/ +165	°C
Hermetic seal	NA	Atm.cm3/s
Panel leakage	NA	

SPECIFICATION

RAD-GEN-CONN-001
RAD-DET-CONN-003

OTHER CHARACTERISTICS

Assembly instruction:

Others: