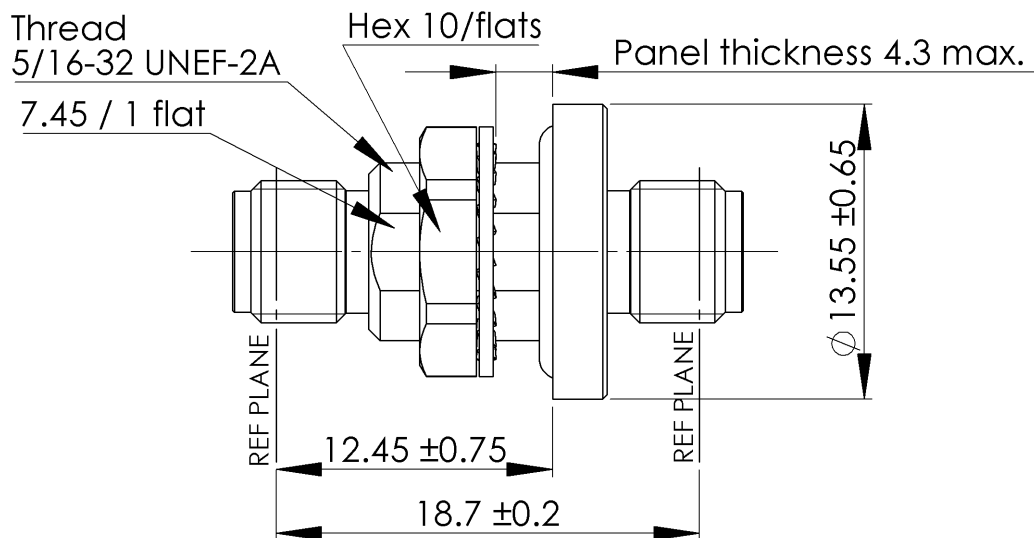


PAGE 1/2

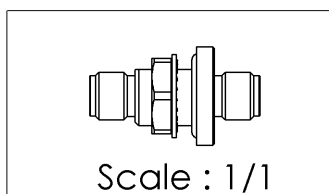
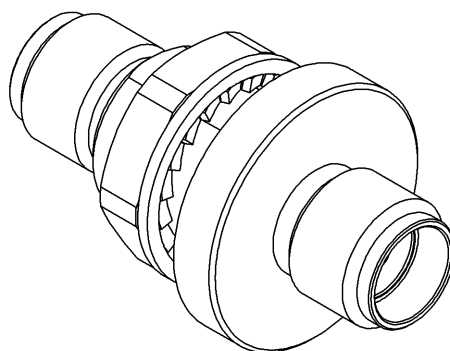
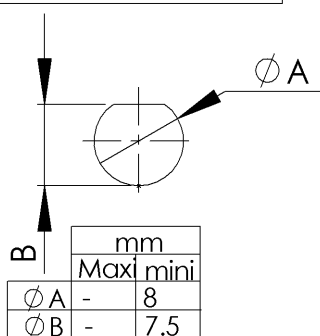
ISSUE 2032A

SERIES SMA-S

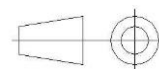
PART NUMBER R125753000X



PANEL CUT OUT



All dimensions are in mm.



COMPONENTS	MATERIALS	PLATING (µm)
Body	BERYLLIUM COPPER	Cu2.5 Au2.5
Center contact	BERYLLIUM COPPER	Cu2.5 Au2.5
Outer contact	-	-
Insulator	PTFE	
Gasket	SILICONE	
Others parts	Glass bead	Cu2.5 Au2.5
-	-	-
-	-	-

PAGE 2/2

ISSUE 2032A

SERIES SMA-S

PART NUMBER R125753000X

PACKAGING

Standard	Unit	Other
1	-	Contact us

ELECTRICAL CHARACTERISTICS

Impedance		50	Ω
Frequency		0-22	GHz
VSWR	1.10 +	0,0150	x F(GHz) Maxi
Insertion loss		0.02+0.3	√F(GHz) dB Maxi
RF leakage	- (NA	- F(GHz)) dB Maxi
Voltage rating		500	Vrms Maxi
Dielectric withstanding voltage		1000	Vrms mini
Insulation resistance		5000	MΩ mini

MECHANICAL CHARACTERISTICS

Center contact retention			
Axial force – Mating End		27	N mini
Axial force – Opposite end		27	N mini
Torque		NA	N.cm mini
Recommended torque			
Mating		170	N.cm
Panel nut		260	N.cm
Mating life		500	Cycles Maxi
Weight		8,1000	g Maxi

ENVIRONMENTAL

Operating temperature	-65+165	°C
Hermetic seal	10-8	Atm.cm3/s
Panel leakage		

SPECIFICATION

RAD-GEN-CONN 001
RAD-DET-CONN 004

OTHER CHARACTERISTICS

Assembly instruction:

Others: