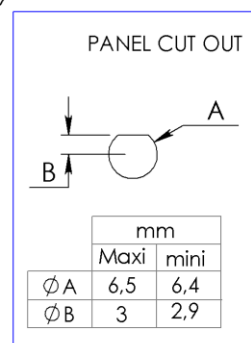
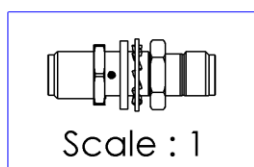
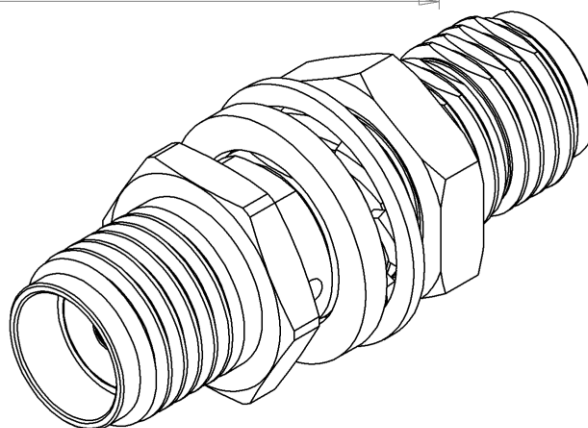
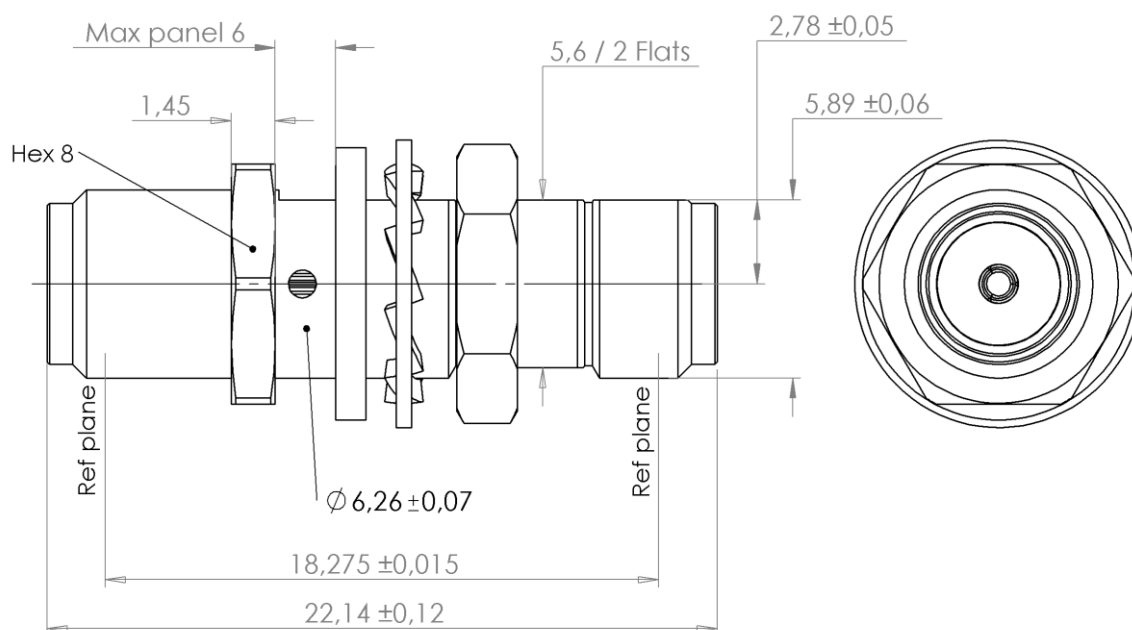


PAGE 1/2

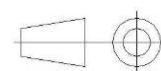
ISSUE 2032A

SERIES SMA-X

PART NUMBER R125720001X



All dimensions are in mm.



COMPONENTS	MATERIALS	PLATING (µm)
Body	<b>STAINLESS STEEL</b>	<b>PASSIVATED.</b>
Center contact	<b>BERYLLIUM COPPER</b>	<b>GOLD 1.3 OVER NICKEL2</b>
Outer contact		
Insulator	<b>PTFE</b>	
Gasket		
Others parts	<b>STAINLESS STEEL</b>	<b>GOLD 0.2 OVER NICKEL 2</b>
-	-	-
-	-	-

PAGE 2/2

ISSUE 2032A

SERIES SMA-X

PART NUMBER R125720001X

### PACKAGING

Standard	Unit	Other
1	-	Contact us

### ELECTRICAL CHARACTERISTICS

Impedance	50	Ω
Frequency	0-18	GHz
VSWR	1.05 + 0,0050	x F(GHz) Maxi
Insertion loss	0.02+0.07	√F(GHz) dB Maxi
RF leakage	- ( 90	- F(GHz)) dB Maxi
Voltage rating	350	Vrms Maxi
Dielectric withstanding voltage	500	Vrms mini
Insulation resistance	5000	MΩ mini

### MECHANICAL CHARACTERISTICS

Center contact retention		
Axial force – Mating End	27	N mini
Axial force – Opposite end	27	N mini
Torque	2.8	N.cm mini
Recommended torque		
Mating	80-120	N.cm
Panel nut	150	N.cm
Mating life	500	Cycles Maxi
Weight	4,7000	g Maxi

### ENVIRONMENTAL

Operating temperature	-65 +165	°C
Hermetic seal		Atm.cm3/s
Panel leakage		

### SPECIFICATION

**RAD-GEN-CONN 001**  
**RAD-DET-CONN 004**

### OTHER CHARACTERISTICS

Assembly instruction:

Others: