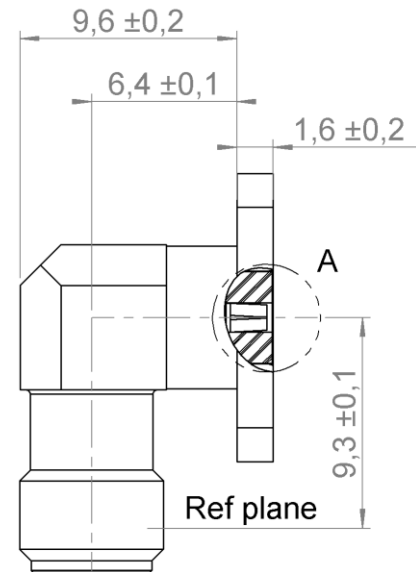
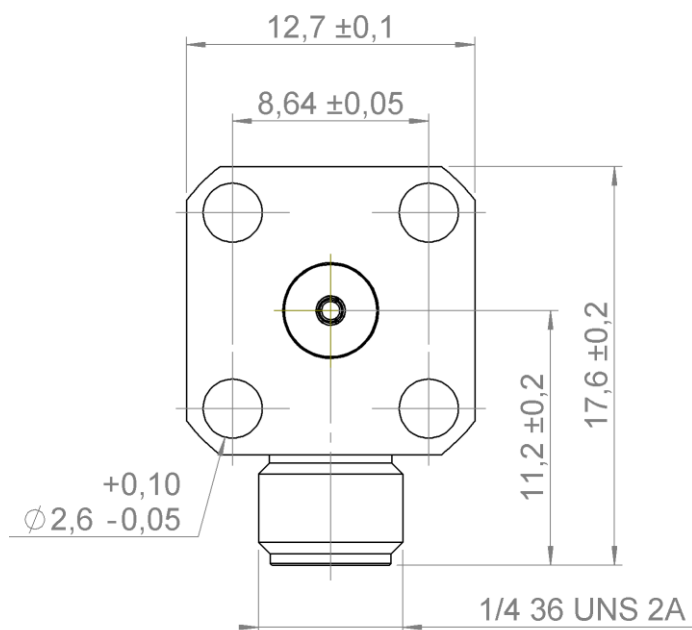


PAGE 1/2

ISSUE 2032A

SERIES SMA-X

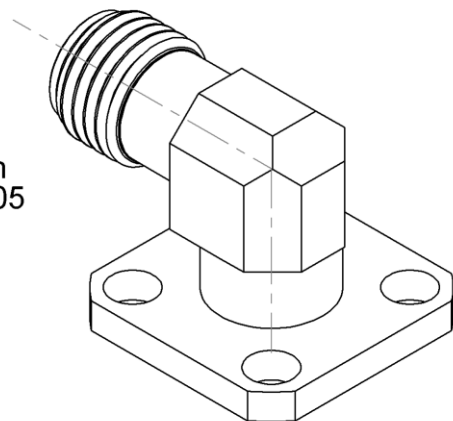
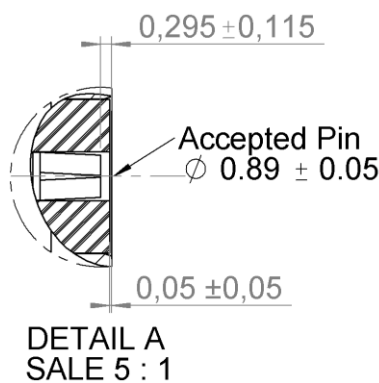
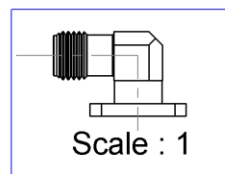
PART NUMBER R125670100X



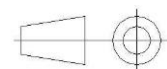
PANEL CUT OUT

A DIA
B DIA
4 holes

	mm	
	Maxi	mini
A	4.2	4.1
B	2.7	2.6
C	8.69	8.59



All dimensions are in mm.



COMPONENTS	MATERIALS	PLATING (µm)
Body	STAINLESS STEEL	GOLD 0.8 OVER NICKEL 2
Center contact	BERYLLIUM COPPER	GOLD 1.3 OVER NICKEL2
Outer contact		
Insulator	PTFE	
Gasket		
Others parts		
-	-	-
-	-	-

PAGE 2/2

ISSUE 2032A

SERIES SMA-X

PART NUMBER R125670100X

PACKAGING

Standard	Unit	Other
1	-	Contact us

ELECTRICAL CHARACTERISTICS

Impedance	50	Ω
Frequency	0-18	GHz
VSWR	1.05 + 0,0100	x F(GHz) Maxi
Insertion loss	0.02+0.06	√F(GHz) dB Maxi
RF leakage	- (95	- F(GHz)) dB Maxi
Voltage rating	335	Vrms Maxi
Dielectric withstanding voltage	1000	Vrms mini
Insulation resistance	5000	MΩ mini

ENVIRONMENTAL

Operating temperature	-65/+165	°C
Hermetic seal	NA	Atm.cm3/s
Panel leakage	NA	

MECHANICAL CHARACTERISTICS

Center contact retention		
Axial force – Mating End	27	N mini
Axial force – Opposite end	27	N mini
Torque	NA	N.cm mini
Recommended torque		
Mating	80-120	N.cm
Panel nut	NA	N.cm
Mating life	500	Cycles Maxi
Weight	4,8000	g Maxi

SPECIFICATION

RAD-GEN-CONN 001
RAD-DET-CONN 003

OTHER CHARACTERISTICS

Assembly instruction:

Others: