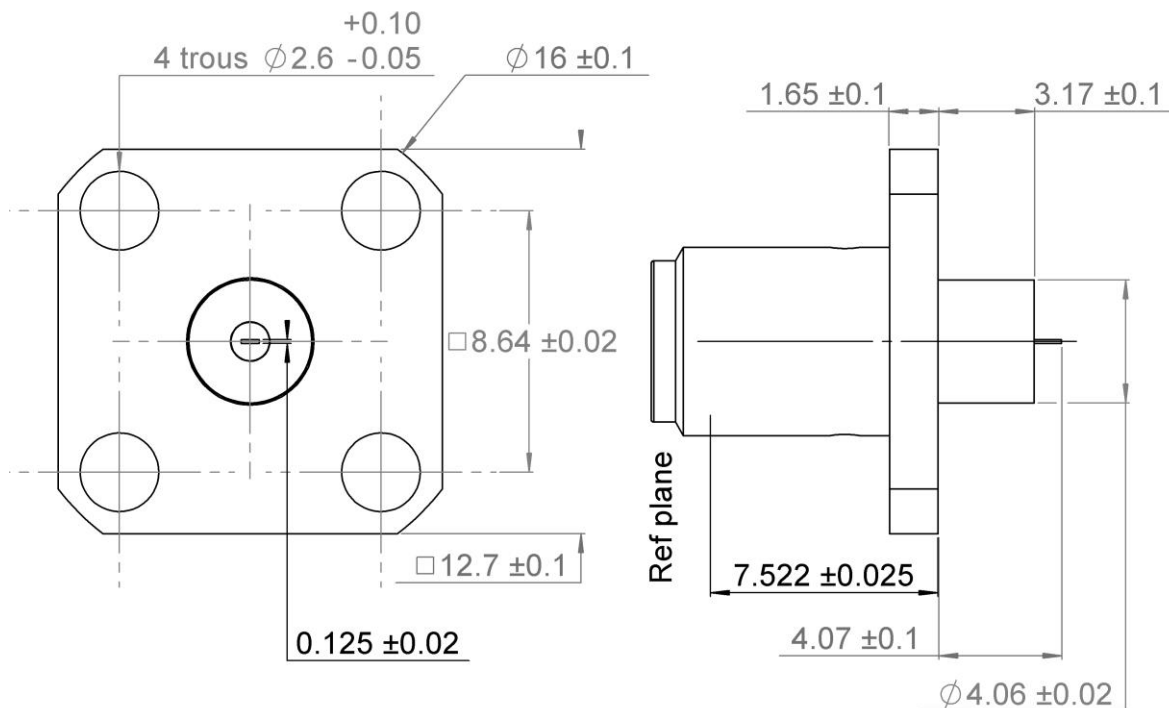


PAGE 1/2

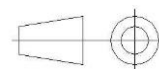
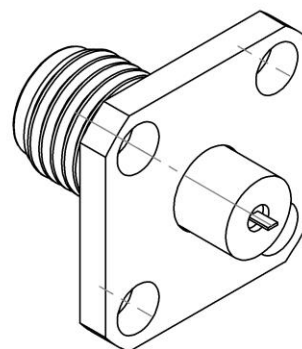
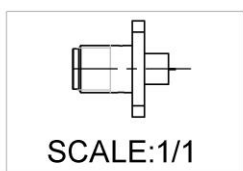
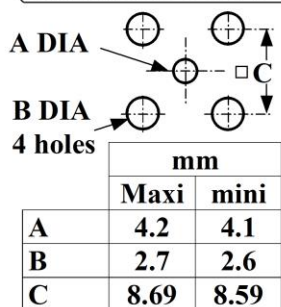
ISSUE 2030A

SERIES SMA-X

PART NUMBER R125622000X



PANEL CUT OUT



All dimensions are in mm.

COMPONENTS	MATERIALS	PLATING (μm)
Body	X5 CR NI 18 10 A2	NI 2 AU 1.3
Center contact	BERYLLIUM COPPER	NI 2 AU 1.3
Outer contact		
Insulator	PTFE	
Gasket		
Others parts		
-	-	-
-	-	-

PAGE 2/2

ISSUE 2030A

SERIES SMA-X

PART NUMBER R125622000X

PACKAGING

Standard	Unit	Other
1	-	Contact us

ELECTRICAL CHARACTERISTICS

Impedance		50	Ω
Frequency		0-18	GHz
VSWR	1.1	+	0,0100 x F(GHz) Maxi
Insertion loss		0.02+0.05	√F(GHz) dB Maxi
RF leakage	- (120	- F(GHz)) dB Maxi
Voltage rating		335	Vrms Maxi
Dielectric withstanding voltage			Vrms mini
Insulation resistance		5000	MΩ mini

MECHANICAL CHARACTERISTICS

Center contact retention			
Axial force – Mating End		27	N mini
Axial force – Opposite end		27	N mini
Torque			N.cm mini
Recommended torque			
Mating		80-120	N.cm
Panel nut			N.cm
Mating life		500	Cycles Maxi
Weight		3,3000	g Maxi

ENVIRONMENTAL

Operating temperature	-65/+105	°C
Hermetic seal		Atm.cm3/s
Panel leakage		

SPECIFICATION

RAD-GEN-CONN 001
RAD-DET-CONN 003

OTHER CHARACTERISTICS

Assembly instruction:

Others: