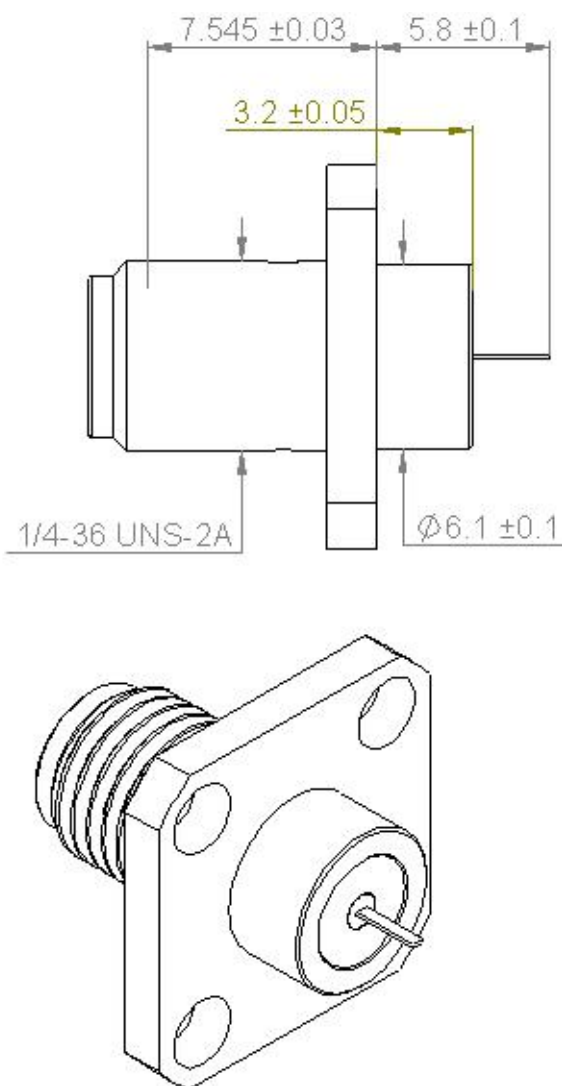
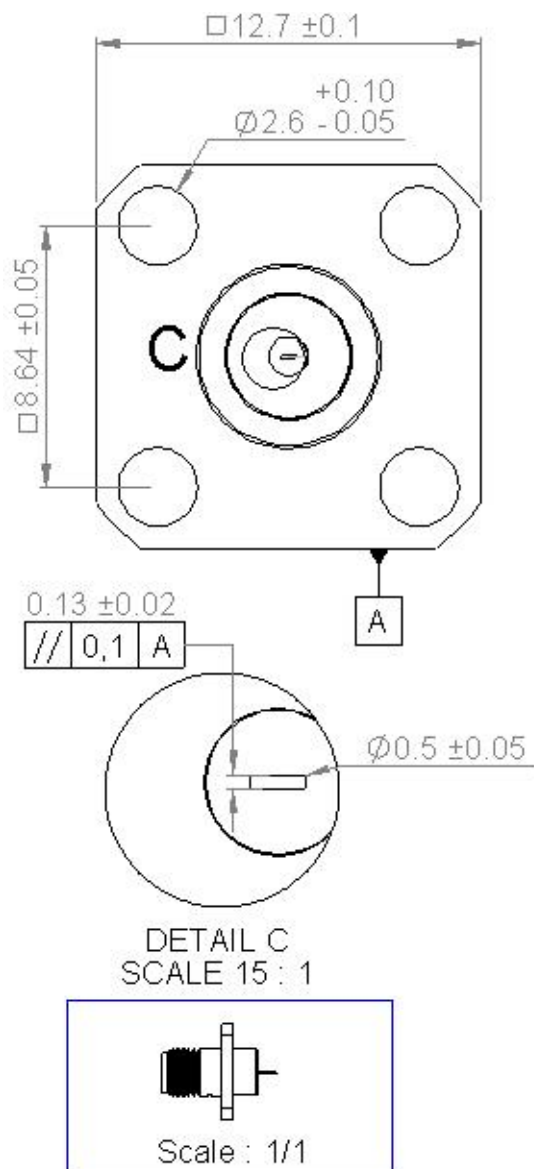


PAGE 1/2

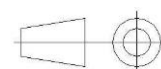
ISSUE 2030A

SERIES SMA-X

PART NUMBER R125612120X



All dimensions are in mm.



COMPONENTS	MATERIALS	PLATING (μm)
Body	STAINLESS STEEL	GOLD 1.3 OVER NICKEL2
Center contact	BERYLLIUM COPPER	GOLD 1.3 OVER NICKEL2
Outer contact	-	-
Insulator	PTFE	-
Gasket	-	-
Others parts	-	-
-	-	-
-	-	-

PAGE 2/2	ISSUE 2030A	SERIES SMA-X	PART NUMBER R125612120X
----------	-------------	--------------	-------------------------

PACKAGING

Standard	Unit	Other
1	-	Contact us

ELECTRICAL CHARACTERISTICS

Impedance	50	Ω
Frequency	0-18	GHz
VSWR	1.10* + 0,0100	x F(GHz) Maxi
Insertion loss	0.02+0.05	√F(GHz) dB Maxi
RF leakage	- (95	- F(GHz)) dB Maxi
Voltage rating	335	Vrms Maxi
Dielectric withstanding voltage	1000	Vrms mini
Insulation resistance	5000	MΩ mini

MECHANICAL CHARACTERISTICS

Center contact retention		
Axial force – Mating End	27	N mini
Axial force – Opposite end	27	N mini
Torque	2.8	N.cm mini
Recommended torque		
Mating	80-120	N.cm
Panel nut	NA	N.cm
Mating life	500	Cycles Maxi
Weight	3,3000	g Maxi

ENVIRONMENTAL

Operating temperature	-65/+105	°C
Hermetic seal	NA	Atm.cm3/s
Panel leakage	NA	

SPECIFICATION

RAD-GEN-CONN 001
RAD-DET-CONN 003

OTHER CHARACTERISTICS

Assembly instruction:

Others:

***COAXIAL TRANSMISSION LINE ONLY**