



RADIAL®
Microwave components

TECHNICAL DATA SHEET

R583 F33 122

22 GHz SMA LATCHING S.P.4 T. SWITCH

Page
1 / 2

OPTIONS : / SEPARATED RESETS / INDICATOR / POSITIVE COMMON

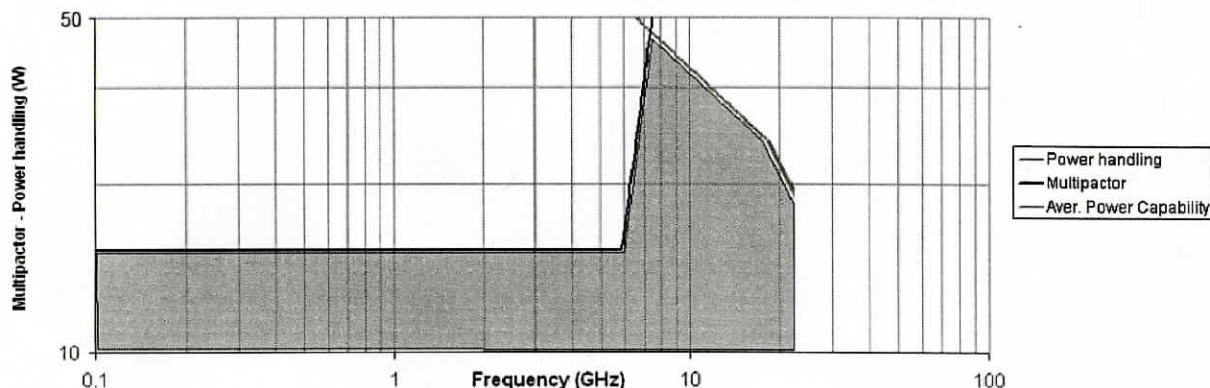
RF CHARACTERISTICS

NUMBER OF WAYS : 4
FREQUENCY RANGE : 0 - 22 GHz
IMPEDANCE : 50 Ohms

FREQUENCY (GHz)	0 - 3	3 - 8	8 -12.4	12.4- 18	18 - 22
V.S.W.R <=	1.20	1.30	1.40	1.50	1.70
INSERT. LOSS <=	0.20 dB	0.30 dB	0.40 dB	0.50 dB	0.70 dB
ISOLATION >=	80 dB	70 dB	60 dB	60 dB	50 dB
AVER. POWER (*)	240 W	150 W	120 W	100 W	40 W

SWITCH REPEATABILITY : 0.03 dB peak change in insertion loss over 100 cycles

Multipactor and Power handling under vacuum with no margin



ELECTRICAL CHARACTERISTICS

ACTUATOR : LATCHING
NOMINAL CURRENT AT 25° C (±10%) : 125 mA
ACTUATOR VOLTAGE (Vcc) : 28V (24 to 30V) / POSITIVE COMMON
TERMINALS : 25 pins D-SUB male connector
INDICATOR RATING : 1 W / 30 V / 100 mA

MECHANICAL CHARACTERISTICS

CONNECTORS : SMA female per MIL C 39012
LIFE : 5.000.000 cycles per position
SWITCHING TIME (nominal voltage;25° C) : < 15 ms
CONSTRUCTION : vacuum compatible
WEIGHT : < 220 g

ENVIRONMENTAL CHARACTERISTICS

OPERATING TEMPERATURE RANGE (°C) : -40 , +85
STORAGE TEMPERATURE RANGE (°C) : -55 , +85

(* : average power at 25° C per RF path)

ISSUE 18.Jul.12

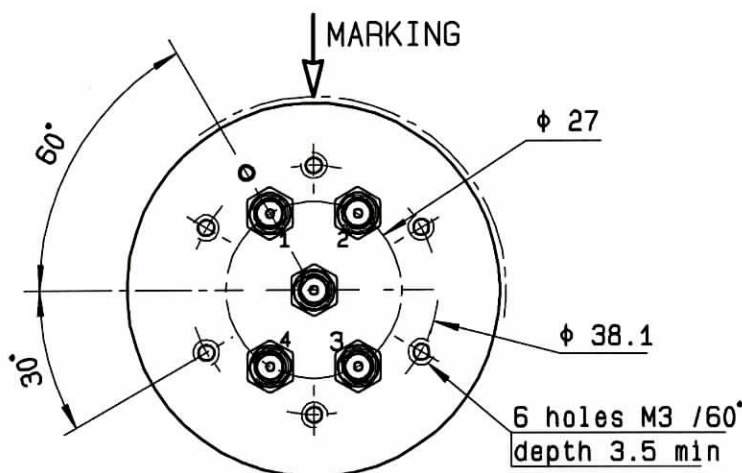
This information is given as an indication. In the continual goal to improve our products, we reserve the right to make any modifications judged necessary

DRAWING

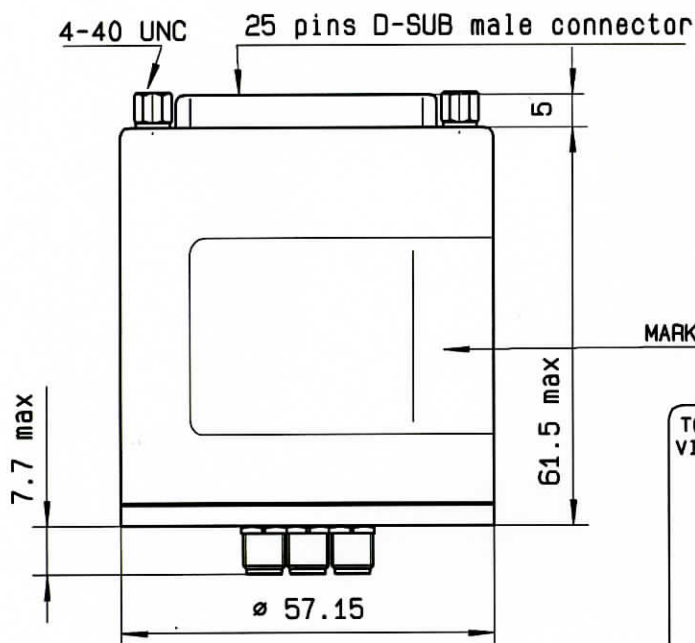
General tolerance: $\pm 0,5$ mm

R583 F33 122

Page
2/2

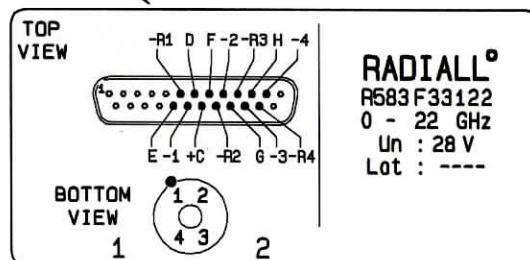


Voltage	RF continuity	Ind.
+C -1	P1 ↔ R	D.E
+C -R1	P1 ↔ J1	--
+C -2	P2 ↔ R	D.F
+C -R2	P2 ↔ J2	--
+C -3	P3 ↔ R	D.G
+C -R3	P3 ↔ J3	--
+C -4	P4 ↔ R	D.H
+C -R4	P4 ↔ J4	--

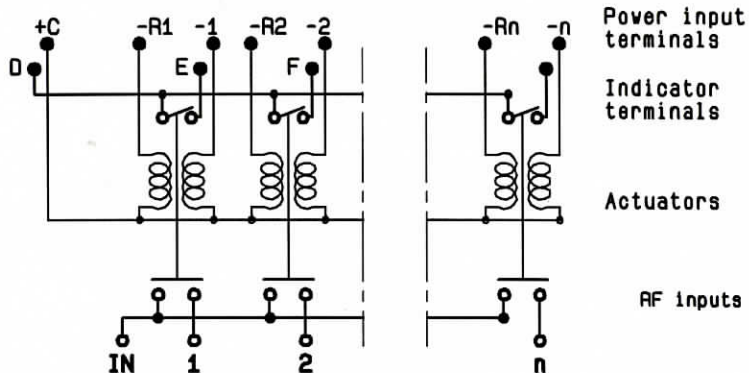


MARKING

TOP VIEW (TERMINALS)



SCHEMATIC DIAGRAM



ISSUE 18.Jul.12