

PAGE 1/2

ISSUE 22-03-22

SERIE : SPDT

PART NUMBER : R570143015LP

RF CHARACTERISTICS

Frequency range : 0 - 12.4 GHz
Impedance : 50 Ohms

| Frequency (GHz) | DC - 1 | 1 - 2 | 2 - 3 | 3 - 8 | 8 - 12.4 |
|--------------------|---------|---------|---------|---------|----------|
| VSWR max | 1.15 | 1.20 | 1.25 | 1.35 | 1.50 |
| Insertion loss max | 0.15 dB | 0.20 dB | 0.25 dB | 0.35 dB | 0.50 dB |
| Isolation min | 85 dB | 80 dB | 75 dB | 70 dB | 60 dB |
| Average power (*) | 700 W | 500 W | 400 W | 250 W | 200 W |

| | Passive intermodulation |
|---------------------------|--------------------------------|
| Tone 1 | 1810 MHz, approximately 43 dBm |
| Tone 2 | 1850 MHz, approximately 43 dBm |
| 3 rd order PIM | - 160 dBc at 1770 MHz |

Depending on application, carrier powers and frequencies, PIM measurements can vary.
PIM testing is not measured during product acceptance test.

ELECTRICAL CHARACTERISTICS

Actuator : LATCHING
Nominal current ** : 125 mA
Actuator voltage (Vcc) : 28V (24 to 30V) / POSITIVE COMMON
Terminals : 9 pins D-SUB male connector
Indicator rating : 1 W / 30 V / 100 mA

MECHANICAL CHARACTERISTICS

Connectors***** : N female per MIL-C 39012
Life : 2 million cycles
Switching Time*** : < 15 ms
Construction : Splashproof
Weight : < 185 g

ENVIRONMENTAL CHARACTERISTICS

Operating temperature range : -25°C to +70°C
Storage temperature range : -55°C to +85°C

- (* Average power at 25°C per RF Path)
(** At 25° C ±10%)
(*** Nominal voltage ; 25° C)
(***** Recommended mating torque: 300 N.cm)



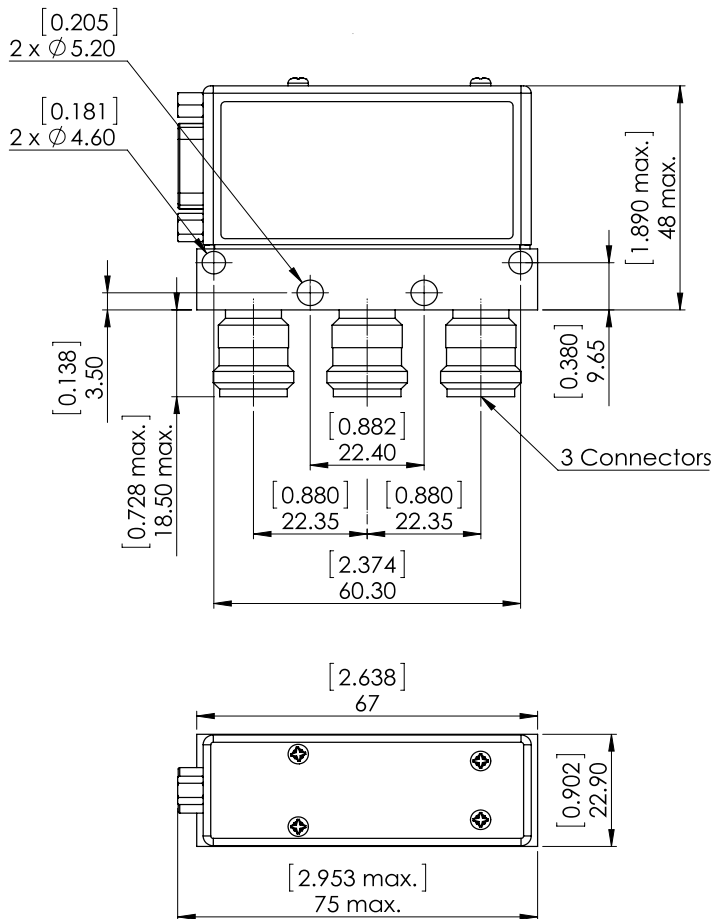
PAGE **2/2**

ISSUE **22-03-22**

SERIE : **SPDT**

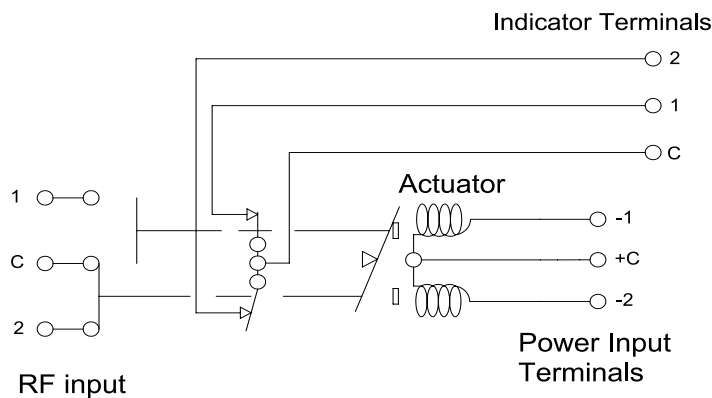
PART NUMBER : **R570143015LP**

DRAWING

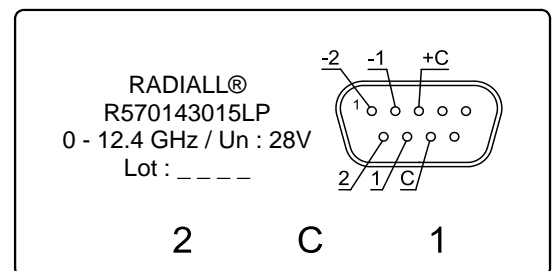


General tolerances : $\pm 0,5$ mm [0,02 in]

SCHEMATIC DIAGRAM



LABEL



| Voltage | RF Continuity | Ind. |
|---------|---------------|------|
| +C -1 | C ↔ 1 | C.1 |
| +C -2 | C ↔ 2 | C.2 |