

PAGE 1/2

ISSUE 22-03-22

SERIE : SPDT

PART NUMBER : R570123105LP

## RF CHARACTERISTICS

Frequency range : 0 - 12.4 GHz

Impedance : 50 Ohms

Frequency (GHz)	DC - 1	1 - 2	2 - 3	3 - 8	8 - 12.4
VSWR max	1.15	1.20	1.25	1.35	1.50
Insertion loss max	0.15 dB	0.20 dB	0.25 dB	0.35 dB	0.50 dB
Isolation min	85 dB	80 dB	75 dB	70 dB	60 dB
Average power (*)	700 W	500 W	400 W	250 W	200 W

	Passive intermodulation
Tone 1	1810 MHz, approximately 43 dBm
Tone 2	1850 MHz, approximately 43 dBm
3 <sup>rd</sup> order PIM	- 160 dBc at 1770 MHz

Depending on application, carrier powers and frequencies, PIM measurements can vary.

PIM testing is not measured during product acceptance test.

## ELECTRICAL CHARACTERISTICS

Actuator : FAILSAFE  
 Nominal current \*\* : 140 mA  
 Actuator voltage (Vcc) : 28V (24 to 30V)  
 Terminals : 9 pins D-SUB male connector  
 Indicator rating : 1 W / 30 V / 100 mA  
 TTL inputs (E) - High level : 2.2 to 5.5 V / 800µA at 5.5 V  
                                   - Low level : 0 to 0.8 V / 20µA at 0.8 V

## MECHANICAL CHARACTERISTICS

Connectors\*\*\*\*\* : N female per MIL-C 39012  
 Life : 2 million cycles  
 Switching Time\*\*\* : < 15 ms  
 Construction : Splashproof  
 Weight : < 185 g

## ENVIRONMENTAL CHARACTERISTICS

Operating temperature range : -25°C to +70°C  
 Storage temperature range : -55°C to +85°C

(\*) Average power at 25°C per RF Path)

(\*\* At 25° C ±10%)

(\*\*\*) Nominal voltage ; 25° C)

(\*\*\*\* Recommended mating torque: 300 N.cm)



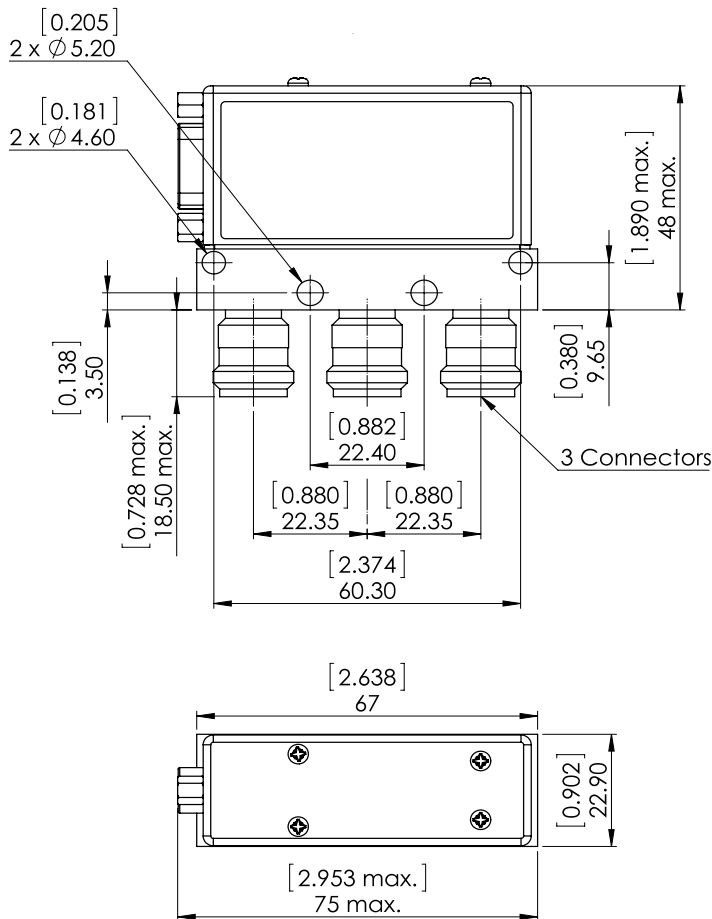
PAGE **2/2**

ISSUE **22-03-22**

SERIE : **SPDT**

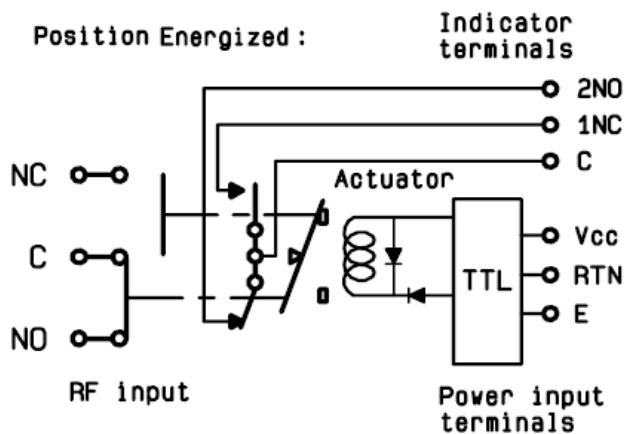
PART NUMBER : **R570123105LP**

DRAWING

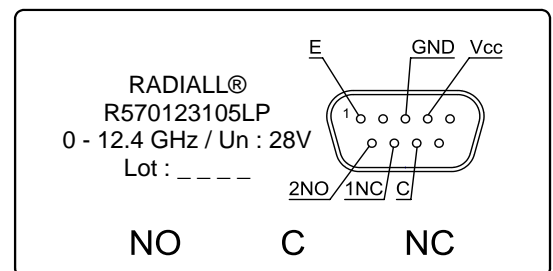


General tolerances :  $\pm 0,5$  mm [0,02 in]

SCHEMATIC DIAGRAM



**LABEL**



TTL input	RF Continuity	Ind.
E = 0	C $\leftrightarrow$ NC	C.1NC
E = 1	C $\leftrightarrow$ NO	C.2NO