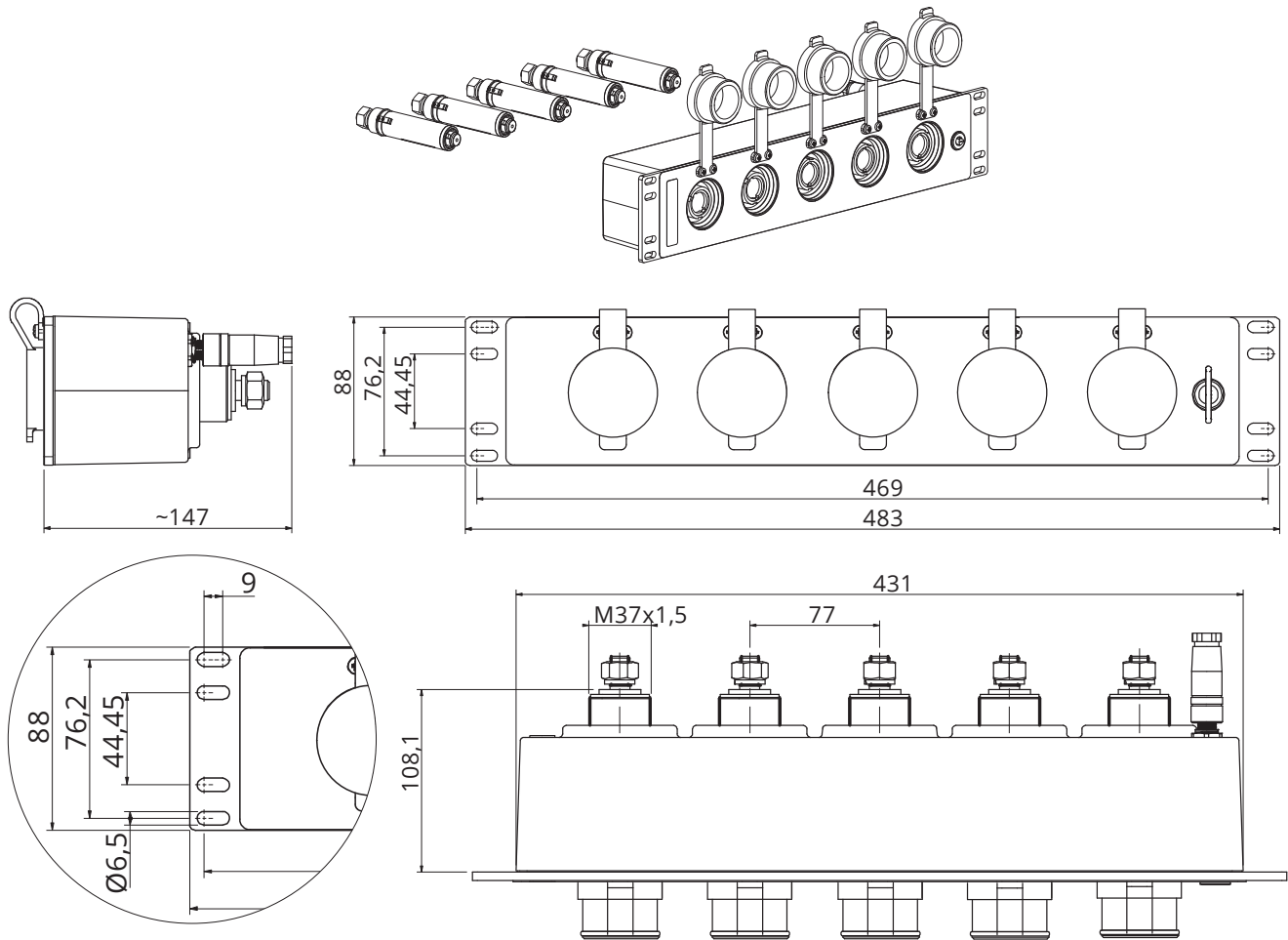


PAGE 1/2

ISSUE 10-06-22A

SERIES SPPC SB

PART NUMBER SPPC-SB-PD-EU-L-M12-T4



CODE DETAILS

Dimensions in mm

SPPC-SB	Series Code	SPPC-SB	Single Pole Power connectors - Sequential Box
PD	Connector Type	PD	Panel Drain
EU	Insulator color	EU	European 5 Connectors (3P+N+E)
L	Caps	L	With rubber caps
M12-T4	Contact Termination	M12-T4	M12 Threaded post – 500A
	Mounting Type	-	Modular 19" rack version

COLOUR CODING

Standard	Earth	Neutral	Phase L1	Phase L2	Phase L3
Europe	Green (GN)	Blue (BU)	Brown (BR)	Black (BK)	Grey (GY)

PAGE 2/2

ISSUE 10-06-22A

SERIES SPPC SB

PART NUMBER SPPC-SB-PD-EU-L-M12-T4

Connector Type:

Sequential Box - Panel Drain Connectors
 Number of contacts: Five Poles
 European Color Coding
 Locking: Bayonet with secondary locking pin
 M12 Threaded post Contacts
 Finger Touch protected contacts IP2X

Reference Documents:

- EN 61984
- EN 60529
- European Directive 2011/65/UE (RoHS)
- UL94

General features:

Operating temperatures: -30°C ÷ +85°C
 Protection degree:

- IP67 (when mated connectors and locked)
- IP65 (when caps are closed)
- IP2X (finger protected)

 Minimum Mating Cycles: 500

Electrical specifications:

Nominal Voltage: 1000 V
 Current Rating: 500A (can be de-rated according to the type and cross section of the cable)
 Contact Resistance: <0.1 mΩ
 Short Circuit Current – 1 second: 16kA
 Short Circuit Current – 3 seconds: 12kA
 Surge Current (DIN VDE 0102/1.90): 62kA – 10mseconds
 Microswitch operating voltage: 250Vac / 30Vdc max.
 Microswitch current rating: 4A (Resistive Load) / 0,5A (Lamp Load)
 M12 - microswitch connections:

Contact position	ON	OFF
1	Common	Common
2	Open	Closed
3	Closed	Open
4	not used	not used

COMPONENTS	MATERIALS	PLATING / FINISHES	ACCESSORIES (included)		
Shells	Aluminum alloy	Anodizing	P/N	Description	Quantity
Contacts	Brass Alloy	Silver Plated 3,5μ min	-	-	-
Gasket	neoprene, nitrile rubber	-	-	-	-
Connectors	Thermoplastic material	-	-	-	-

PACKAGING

Quantity	Type	Weight
1	Carton Box	4.7kg