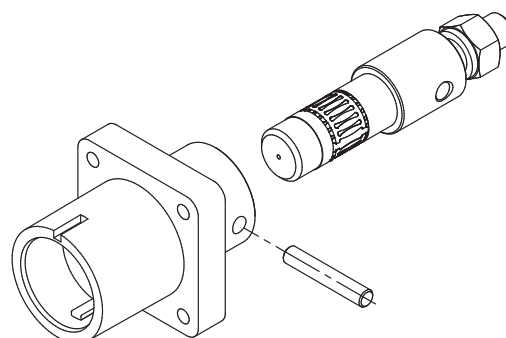
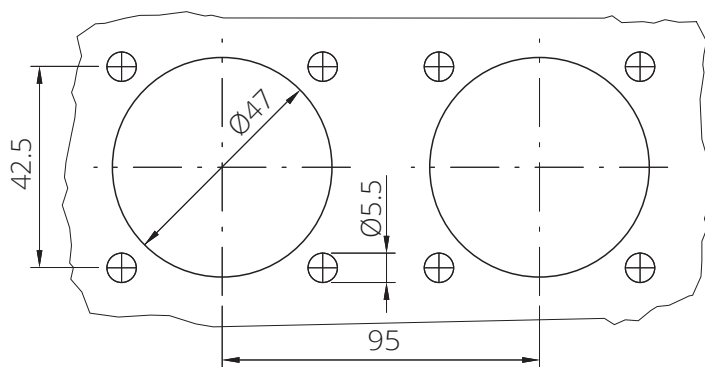


PAGE 1/2

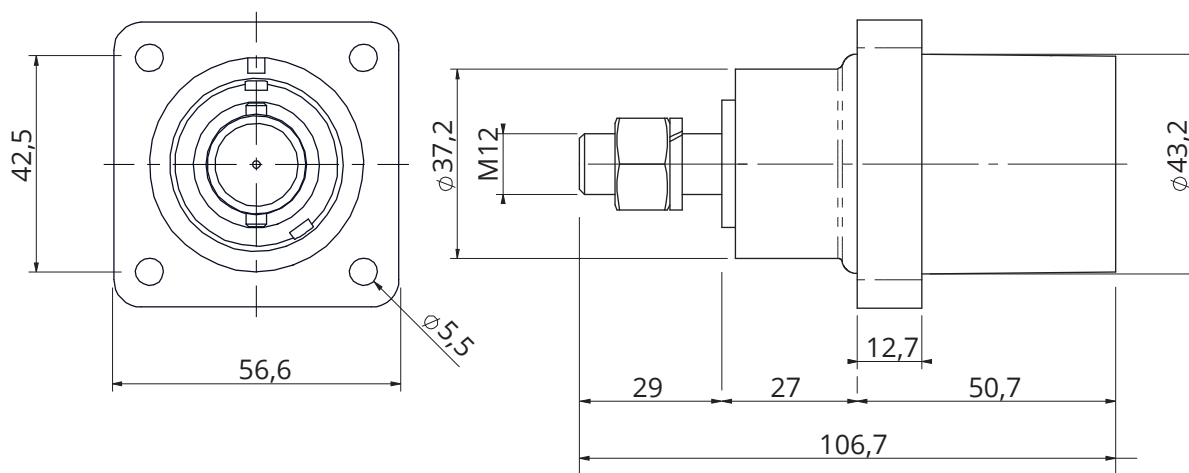
ISSUE 24-01-23A

SERIES SPPC

PART NUMBER SPPC-PWL-2.0-PS-L3-GY-M12-T5




panel cut out



Dimensions in mm

## Code details

Series Code	SPPC-PWL-2.0	Single Pole Power connectors
Connector Type	PS	Panel Source
Key Position	L3	Phase 3
Insulator Color	GY 	Grey
Contact Termination	M12-T5	M12 Threaded post - 500A
Cable External diameter	-	-
Contacts Type	-	Standard contacts
Customization	-	-

PAGE 2/2

ISSUE 24-01-23A

SERIES SPPC

PART NUMBER SPPC-PWL-2.0-PS-L3-GY-M12-T5

#### Connector Type:

Number of contacts: Single Pole  
Panel Source connectors  
Grey Color  
Locking: Bayonet with secondary locking pin  
M12 Threaded post contacts  
Finger Touch protected contacts IP2X

#### Reference Documents:

- EN 61984  
- EN 60529  
- European Directive 2011/65/UE (RoHS)  
- UL94

#### General features:

Operating temperatures: -30°C ÷ +125°C  
Protection degree (mated connectors; according to EN 60529): IP66/67  
Flammability: UL94-V0  
Minimum Mating Cycles: 500

#### Electrical specifications:

Nominal Voltage: 1000 Vac / 1500 Vdc  
Current Rating: 500A  
Minimum Insulation Resistance: 5GΩ @ 500V  
Contact Resistance: <0.1 mΩ  
Rated Voltage to Earth: 2000Vac  
Minimum Flashover (EN60309-1): 6.8kV AC – 1 minute  
Test Voltage (Mated Condition): 5 kV– 1 minute @ 50Hz  
Short Circuit Current – 1 second: 16kA  
Short Circuit Current – 3 seconds: 12kA  
Surge Current (DIN VDE 0102/1.90): 62kA – 10mseconds  
Creepage Distance: >25mm  
Clearance Distance: >25mm

#### Others characteristics:

Panel Contact Tightening Torque: 30Nm max  
Contact Retention in Insulator: 2.5kN Axial Load



COMPONENTS	MATERIALS	PLATING / FINISHES	ACCESSORIES (included)		
Shells	Thermoplastic	-	P/N	Description	Quantity
Contacts	Copper Alloy	Silver Plated	-	-	-
Panel Gasket	-	-	-	-	-
Others part	-	-	-	-	-

#### PACKAGING

Quantity	Type	Weight
1	Plastic Bags	-
-	Carton Box	-