

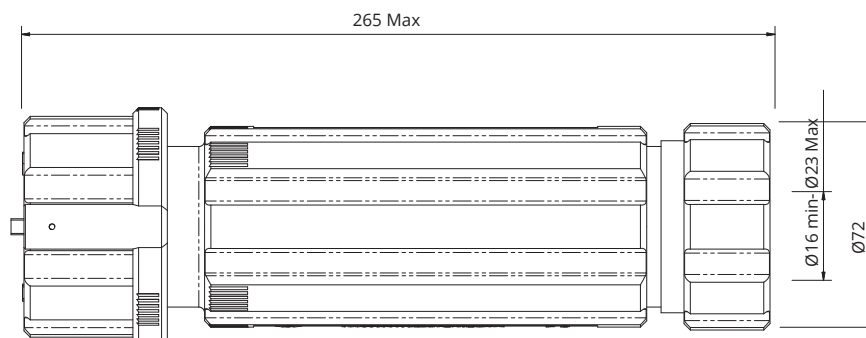
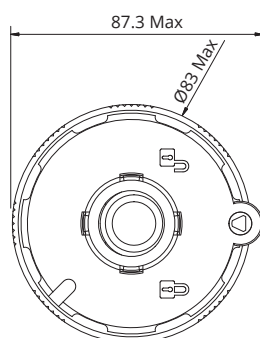
PAGE 1/2

ISSUE 27-01-21A

SERIES SPPC

PART NUMBER SPPC-LJP-120

LUG-IT 120 - Power cable joining system



Dimensions in mm

- Accepts cable 35mm² up to 120mm², for lugs with 8,2mm holes,
- Lug Palm Width 30mm max, Bolt Hole 10mm or 12mm,
- External Cable Ø 16mm – 23mm.

Designation

SPPC-LJP-120

Order Number

VS354804

- Nominal Voltage Un: 1000Vac
- Test voltage: 5.000Vac
- Rated current (to be checked with the specific cable characteristics):
- Lugs 120 mm²:350A (30°C)
- Working temperature: -30°C ÷ +120°C
- Protection degree: IP67 (EN 60529)
- Audible and tactile indication of locking
- Secure lock for unwanted / unauthorised release
- Quick assembly in approx. 2 minutes without special tools. The system can be disassembled and reused

Materials and finishes

Shells thermoplastic resin

Contact-parts copper alloy

Gaskets silicone compound

Other parts thermoplastic resin and stainless steel

PAGE 2/2

ISSUE 27-01-21A

SERIES SPPC

PART NUMBER SPPC-LJP-120

Accessories: LUG-IT Key - remote locking/release key



Designation

SPPC-LJP-KEY

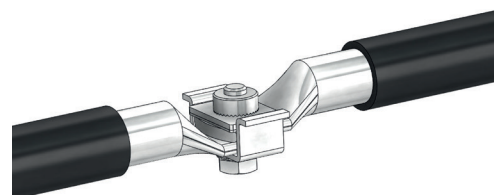
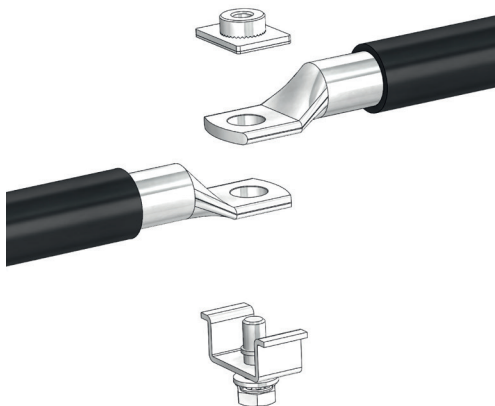
Order Number

VS750082

Lock the central locking ring using the remote release key.



Lug Palm Width 30mm max, Bolt Hole 10mm or 12mm.



Radiall VanSystem S.r.l. | www.vansystem.eu - www.radiall.com