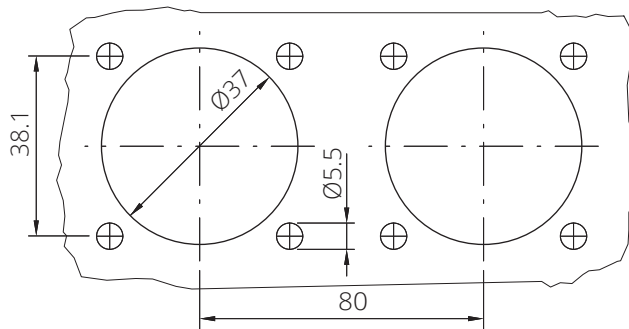


PAGE 1/2

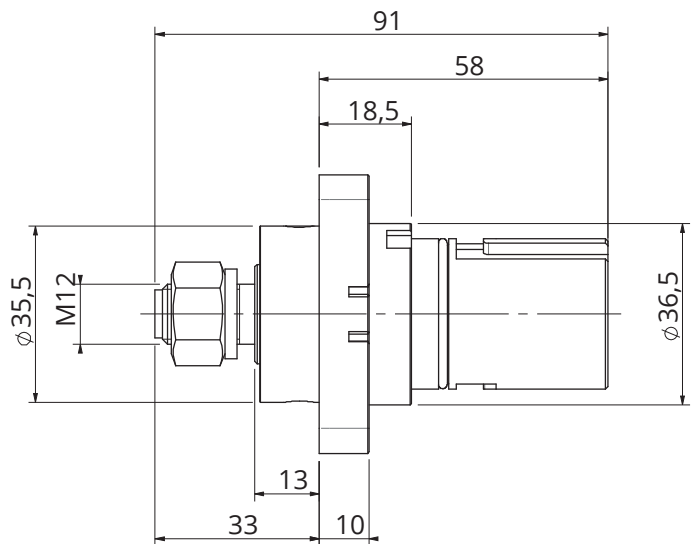
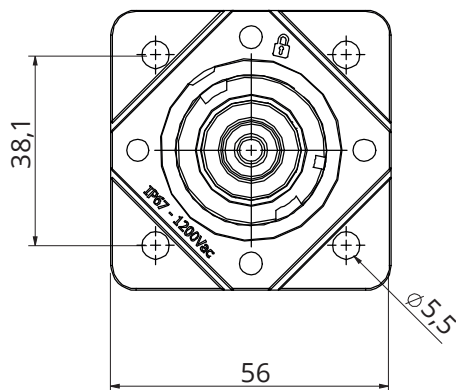
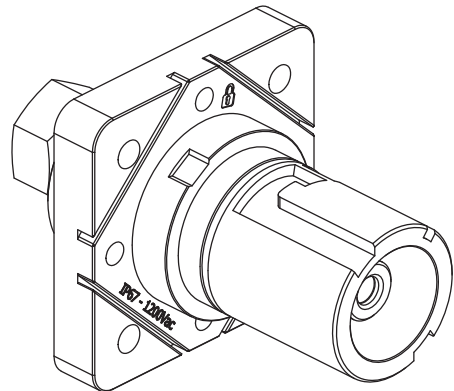
ISSUE 29-05-23A

SERIES SPPC

PART NUMBER SPPC-HK-PD-E-GN-M12-T4



Panel cut out



Dimensions in mm

## Code details

Series Code	SPPC-HK	Single Pole Power Connectors
Connector Type	PD	Panel Drain
Key Position	E	Earth
Insulator Color	GN <span style="color: green;">●</span>	Green
Contact Termination	M12-T4	M12 Threaded post – 400A
Contacts Type	-	Standard contacts
Customization	-	-

PAGE 2/2

ISSUE 29-05-23A

SERIES SPPC

PART NUMBER SPPC-HK-PD-E-GN-M12-T4

**Connector Type:**

Number of contacts: Single Pole  
Panel Drain connectors  
Green Color  
Locking: Spring into the Locked Position  
M12 Threaded post contacts  
Finger Touch protected contacts IP2X

**Reference Documents:**

- EN 61984  
- EN 60529  
- European Directive 2011/65/UE (RoHS)

**General features:**

Operating temperatures: -30°C ÷ +120°C  
Protection degree (mated connectors; according to EN 60529): IP67  
Flammability: UL94-V0  
Minimum Mating Cycles: 500

**Electrical specifications:**

Nominal Voltage: 1200 Vac / Vdc  
Current Rating: 400A  
Contact Resistance: <0.1 mΩ  
Rated Voltage to Earth: 1750Vac, panel thickness<4mm  
1200Vac, panel thickness>4mm  
Short Circuit Current – 1 second: 11kA  
Short Circuit Current – 3 seconds: 4kA  
Surge Current (DIN VDE 0102/1.90): 45KA – 10 mseconds

**Others characteristics:**

Panel Contact Tightening Torque: 30Nm max  
Contact Retention in Insulator: 400N axial load

COMPONENTS	MATERIALS	PLATING / FINISHES	ACCESSORIES (included)		
			P/N	Description	Quantity
Shells	Thermoplastic	-			
Contacts	Copper Alloy	Silver Plated	-	-	-
Panel Gasket	-	-	-	-	-
Others part	-	-	-	-	-

**PACKAGING**

Quantity	Type	Weight
1	Plastic Bags	0.2Kg
-	Carton Box	-