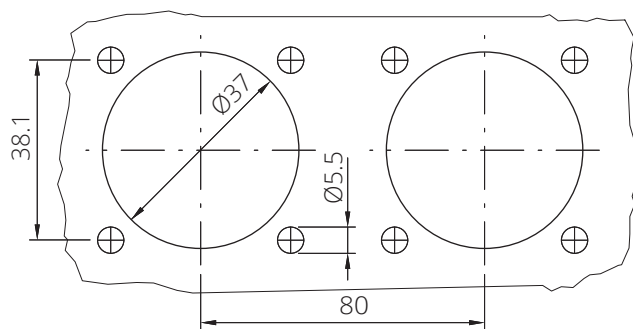


PAGE 1/2

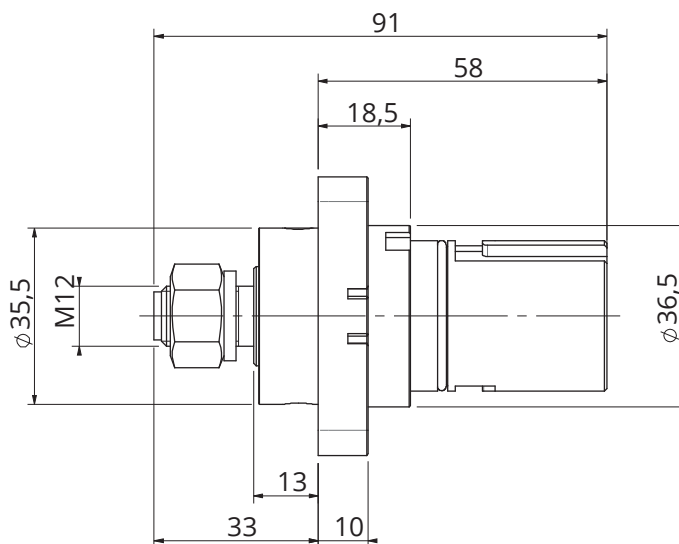
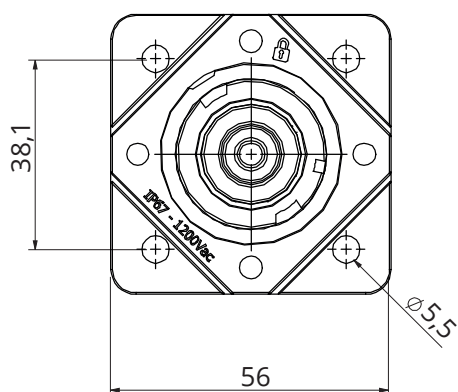
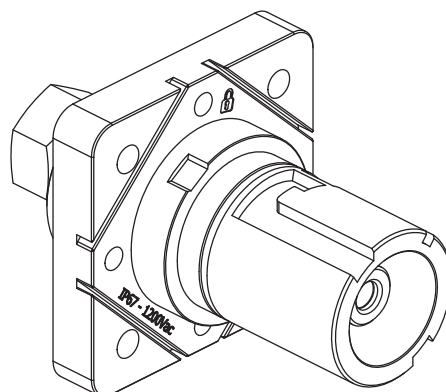
ISSUE 18-01-21A

SERIES SPPC

PART NUMBER SPPC-HK-PD-E-GN-M12-T2



Panel cut out



Dimensions in mm

Code details

Series Code	SPPC-HK	Single Pole Power Connectors
Connector Type	PD	Panel Drain
Key Position	E	Earth
Insulator Color	GN ●	Green
Contact Termination	M12-T2	M12 Threaded post – 250A
Contacts Type	-	Standard contacts
Customization	-	-

PAGE 2/2

ISSUE 18-01-21A

SERIES SPPC

PART NUMBER SPPC-HK-PD-E-GN-M12-T2

Connector Type:

Number of contacts: Single Pole
Panel Drain connectors
Green Color
Locking: Spring into the Locked Position
M12 Threaded post contacts
Finger Touch protected contacts IP2X

Reference Documents:

- EN 61984
- EN 60529
- European Directive 2011/65/UE (RoHS)

General features:

Operating temperatures: -30°C ÷ +120°C
Protection degree (mated connectors; according to EN 60529): IP67
Flammability: UL94-V0
Minimum Mating Cycles: 500

Electrical specifications:

Nominal Voltage: 1200 Vac / Vdc
Current Rating: 250A
Contact Resistance: <0.1 mΩ
Rated Voltage to Earth: 1750Vac, panel thickness<4mm
1200Vac, panel thickness>4mm
Short Circuit Current – 1 second: 11kA
Short Circuit Current – 3 seconds: 4kA
Surge Current (DIN VDE 0102/1.90): 45KA – 10 mseconds

Others characteristics:

Panel Contact Tightening Torque: 30Nm max
Contact Retention in Insulator: 400N axial load

COMPONENTS	MATERIALS	PLATING / FINISHES	ACCESSORIES (included)		
Shells	Thermoplastic	-	P/N	Description	Quantity
Contacts	Copper Alloy	Silver Plated	-	-	-
Panel Gasket	-	-	-	-	-
Others part	-	-	-	-	-

PACKAGING

Quantity	Type	Weight
1	Plastic Bags	0.2Kg
-	Carton Box	-


Radiall VanSystem S.r.l. | www.vansystem.eu - www.radiall.com