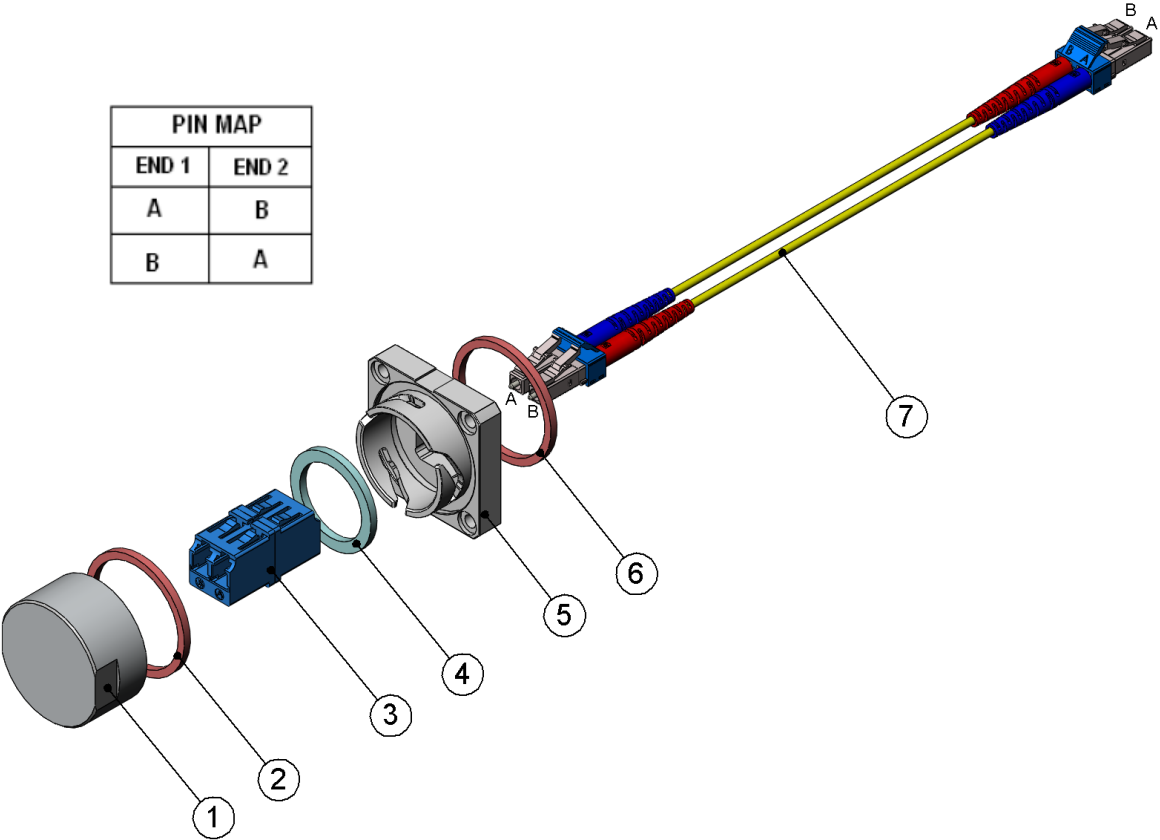


PAGE 1/2	ISSUE 19-03-15B	SERIES R2CT	PART NUMBER R2CT107100
----------	-----------------	-------------	------------------------



DESCRIPTION

REP	COMPONENT	MATERIALS	PLATING
1	PROTECTION CAP	ALUMINIUM	NONE
2	GASKET SEALING CLAMP NUT	SILICONE	
3	LC ADAPTOR (BLUE)	PEI	
4	GASKET	SILICONE	
5	RECEPTACLE BODY	BRASS	TIN NICKEL OVER COPER
6	GASKET SEALING PANEL	SILICONE	
7	LC-LC PATCHCORD	-	

PAGE 2/2

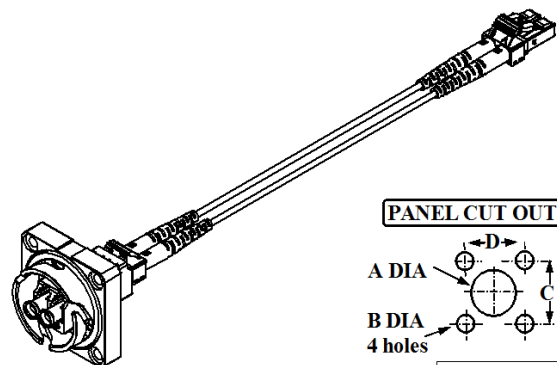
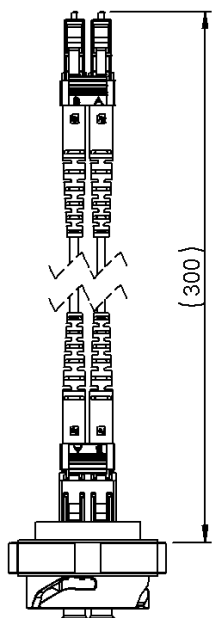
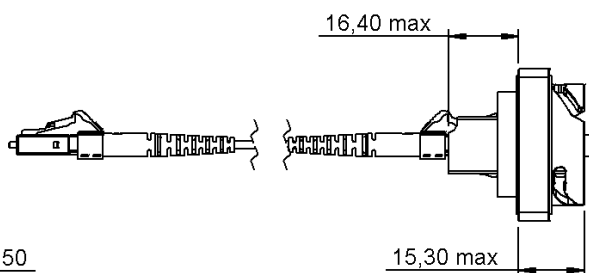
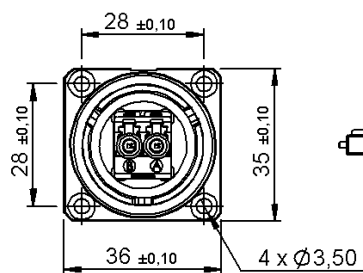
ISSUE 19-03-15B

SERIES R2CT

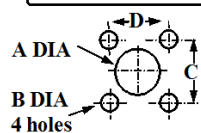
PART NUMBER R2CT107100

GENERAL CHARACTERISTICS

Mechanical Mating endurance	IEC 61300-2-2	200 cycles
Optical: Fiber Insertion loss Return loss Câble	- IEC 61300-3-4 IEC 61300-2-6 -	Single mode 0.5 dB Max. > 50 dB 2 x Ø2mm
Environmental Protection class Operating temperature	IEC 60529 IEC 61300-2-22 -	IP65 mated -40°C to +85°C



PANEL CUT OUT



	mm	
	Maxi	mini
A	24.1	23.9
B	3.5	
C	28.1	27.9
D	28.1	27.9