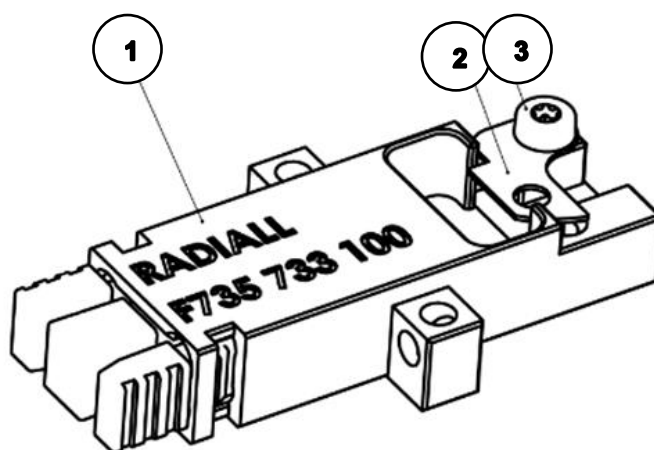
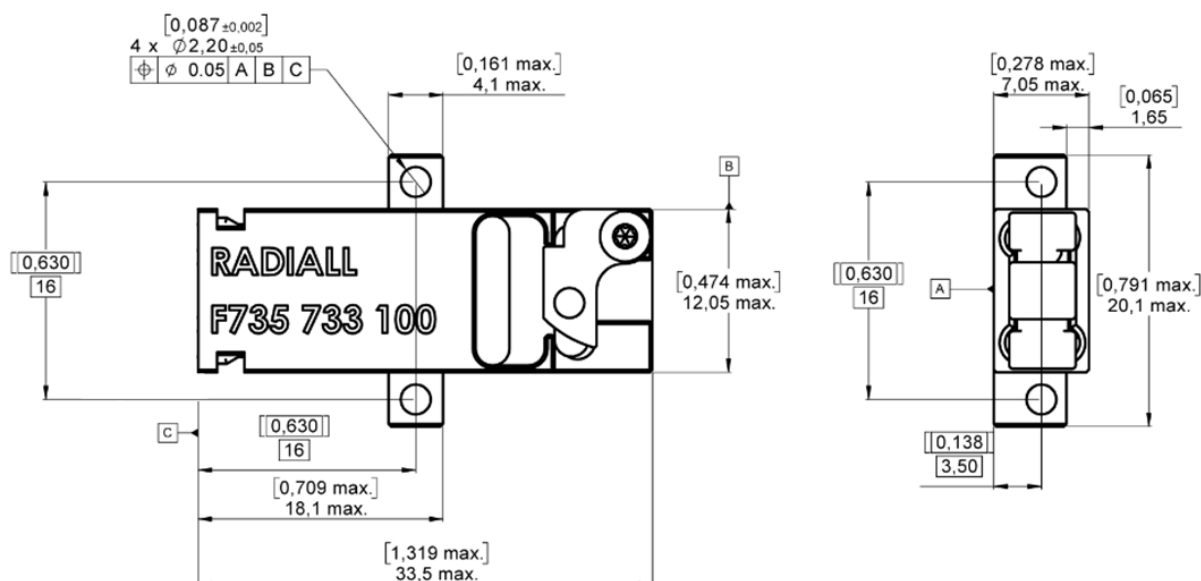


# C-MTITAN™ MT ADAPTER – FOR PCB or PANEL



Dimension in mm [inches]

C-MTitan™ protects a standard MT ferrule to maintain excellent optical performance and provide high density connectivity to harsh environments.

## FEATURES

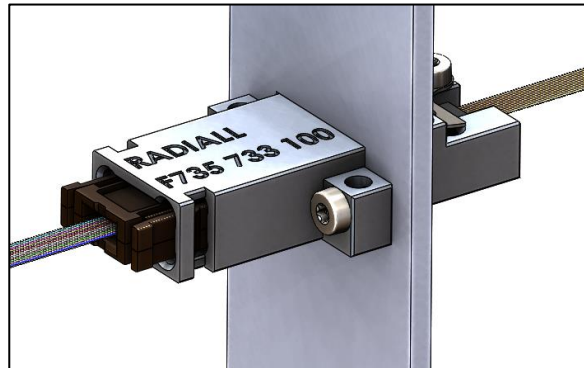
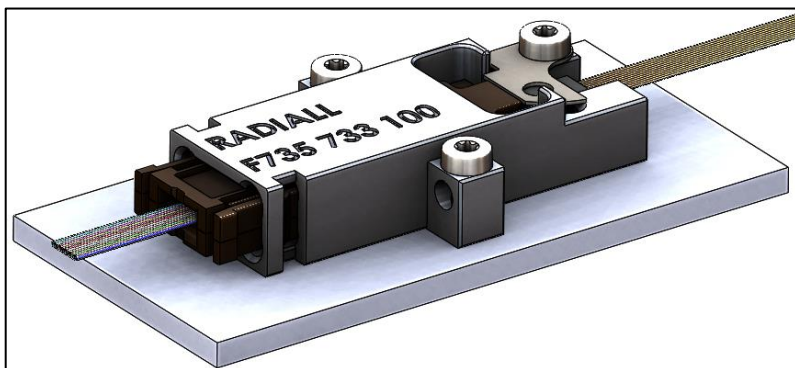
- C-MTitan™ (male) to MT (female) Adapter to be mounted on PCB or panel
- Provide perfect alignment of a C-MTitan™ cartridges vs a standard MT ferrule and offer an interconnect solution for inside the box applications
- 2 different mounting possibilities: Panel or PCB (see picture below)
- No tool is needed to insert and extract the cartridges
- A screw driver (TORX T6) is required to hold in place the MT ferrule



## CHARACTERISTICS

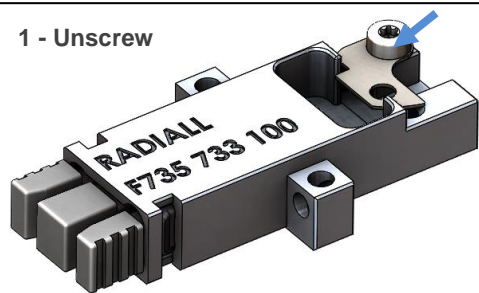
Characteristics	Condition	Properties
Endurance	TIA/EIA 364-09	200 matings – C-MTITAN side
Vibration	TIA/EIA-455-11	23.1grms 15 Hz to 2000 Hz 3 hours/axis, 3 axis
Shocks		40 g 3 shocks in each direction, 15ms
Temperature range	-	-55°C / +105°C (cable dependent)
Salt spray	-	96 h
Material and finish	1 - Body	6061 T6/T651 per AMS-4027 ASTM-B-221 or 209 CHEMICAL CONVERSION per MIL-DTL-5541 T2 C3 (ROHS)
	2 – Lever blade	Stainless steel
	3 - Screw	Stainless steel
Locking torque	M2x0,4 ISO	230-234 N.mm (3,5 mm threaded screw length)
Weight		4 g approx.

## PANEL MOUNT

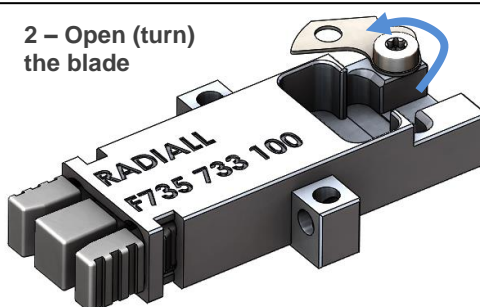


## ASSEMBLY INSTRUCTION

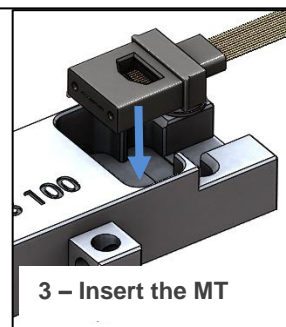
1 - Unscrew



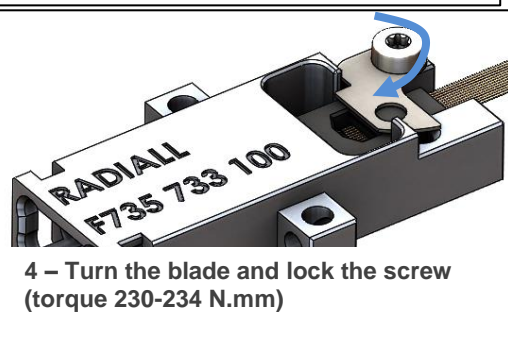
2 - Open (turn) the blade



3 - Insert the MT



4 - Turn the blade and lock the screw (torque 230-234 N.mm)



5 - Connect the C-MTITAN™ male

