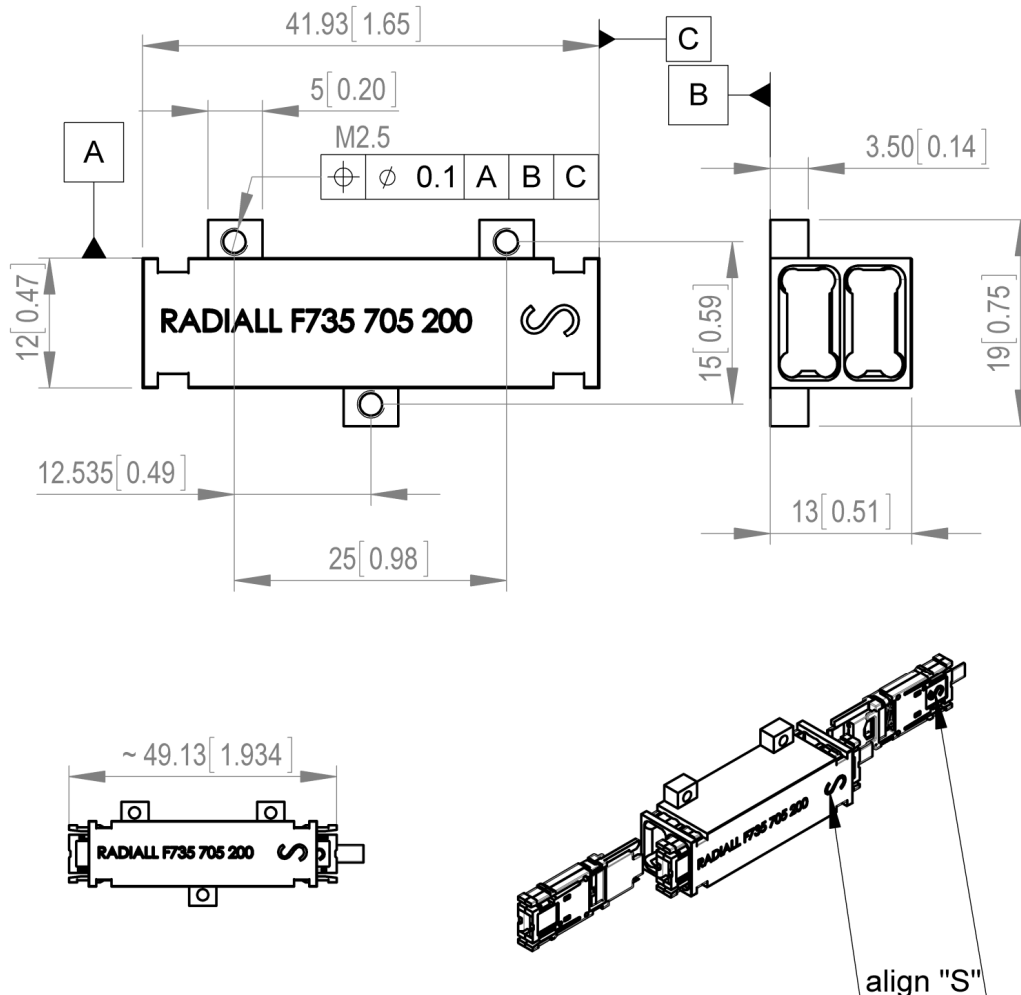


**C-MTITAN™ DUPLEX ADAPTER – FOR PCB**



Dimension: mm [Inch]

C-MTitan™ protects a standard MT ferrule to maintain excellent optical performance and provide high density connectivity to harsh environments.

**FEATURES:**

- C-MTitan™ Duplex Adapter to be mounted on PCB
- Provide perfect alignment of 2 C-MTitan™ cartridges and offer an interconnect solution for inside the box applications
- No tool is needed to insert and extract the cartridges – Just align the “S” marks of the cartridge and the adapter to insert the cartridge in correct position

PAGE 2/2

ISSUE 2015/03/16

SERIES C-MTITAN™

PART NUMBER **F735 705 200**

## CHARACTERISTICS

**Mechanical:**

Endurance: TIA/EIA 364-09	200 matings
Vibration: TIA/EIA-455-11	35.4 Gms

**Environmental:**

Temperature range:	-55 °C / +125 °C ( <i>cable dependent</i> )
Salt spray:	96 h

**Material:**

Material:	6061 T6/T651 per AMS-4027, ASTM-B-221 or 209
Finish:	Nickel coated (Electrolytic over electro less nickel)

**Weight:**

7.4 g approx.
---------------

