
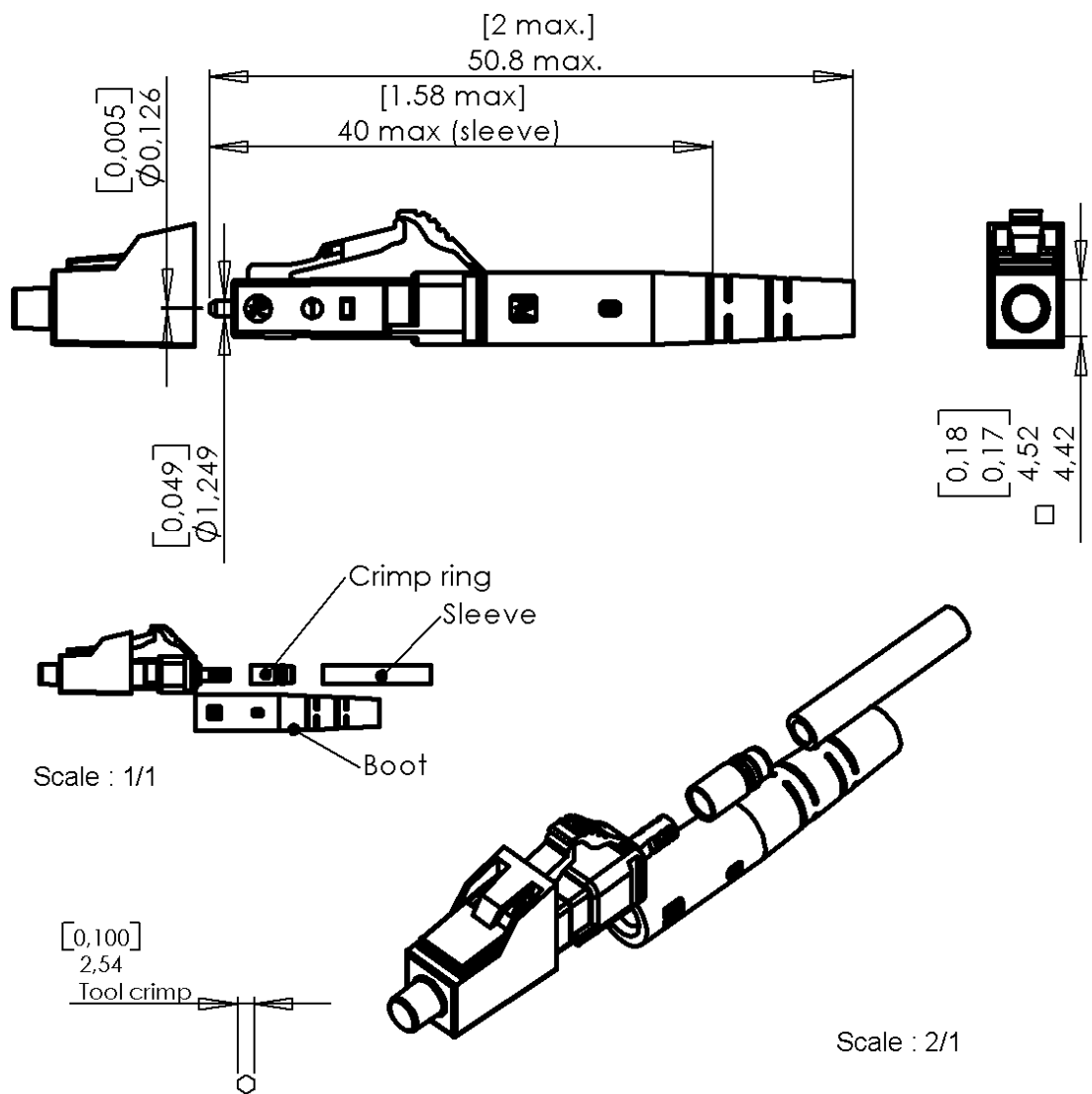



RADIAL 	TECHNICAL DATA SHEET	F727.002.520Y			
LC SIMPLEX PC SINGLE MODE OPTICAL PLUG FOR Ø2.0 MM CABLE		Packaging 1	Series LC	Issue 03/06/2012	Page 1 / 2
Outer plug body : color BLUE		Monobloc			



Original dimensions in mm [inch]

	TECHNICAL DATA SHEET	F727.002.520Y			
LC SIMPLEX PC SINGLE MODE OPTICAL PLUG FOR Ø2.0 MM CABLE		Packaging 1	Series LC	Issue 03/06/2012	Page 2 / 2
Outer plug body : color BLUE		Monobloc			

GENERAL

- ❑ **TYPE** IEC 61754-20 (LC)
Singlemode Zirconia ferrule
RJ –45 latching connector system
- ❑ **FERRULE SIZE** 126 µm
- ❑ **FIBER SIZE** 9/125µm singlemode
- ❑ **CABLE SIZE & TYPE** Ø1.7 – 2.0 mm Simplex ultra tight (buffer/jacket) structure
- ❑ **CABLING PROCEDURE** Refer to 503 08 640 assembly instruction manual

CHARACTERISTICS (Depending on fibre or cable construction)

- ❑ **OPTICAL** Attenuation at 850 nm and 1300 nm
Attenuation plug mated with reference plug : IEC 61300-3-4

PARAMETER	STD
Max	< 0.5dB

Return-Loss Maximum loss variation :

	RL
UPC	> 35 dB

- ❑ **MECHANICAL**

Vibration tests	10 to 55 Hz, 1.5 mm (peak to peak), 2 hr / axis
Impact test	1.5 m drop, 8 cycles
Mechanical Endurance	200 matings
Cable retention	68 N
- ❑ **ENVIRONMENTAL**

Storage temperature range	-55 °C to +125 °C*
Operating temperature range	-55 °C to +125 °C
Thermal cycle test	-40°C to +75°C , 21 Cycles , 168
Humidity/Condensation cycling test	95% RH, -10°C to 65°C, 14 cycles, 168 Hr

(Performance and specification : see document **GEN – F727 001**)

*Except Cap and Packing