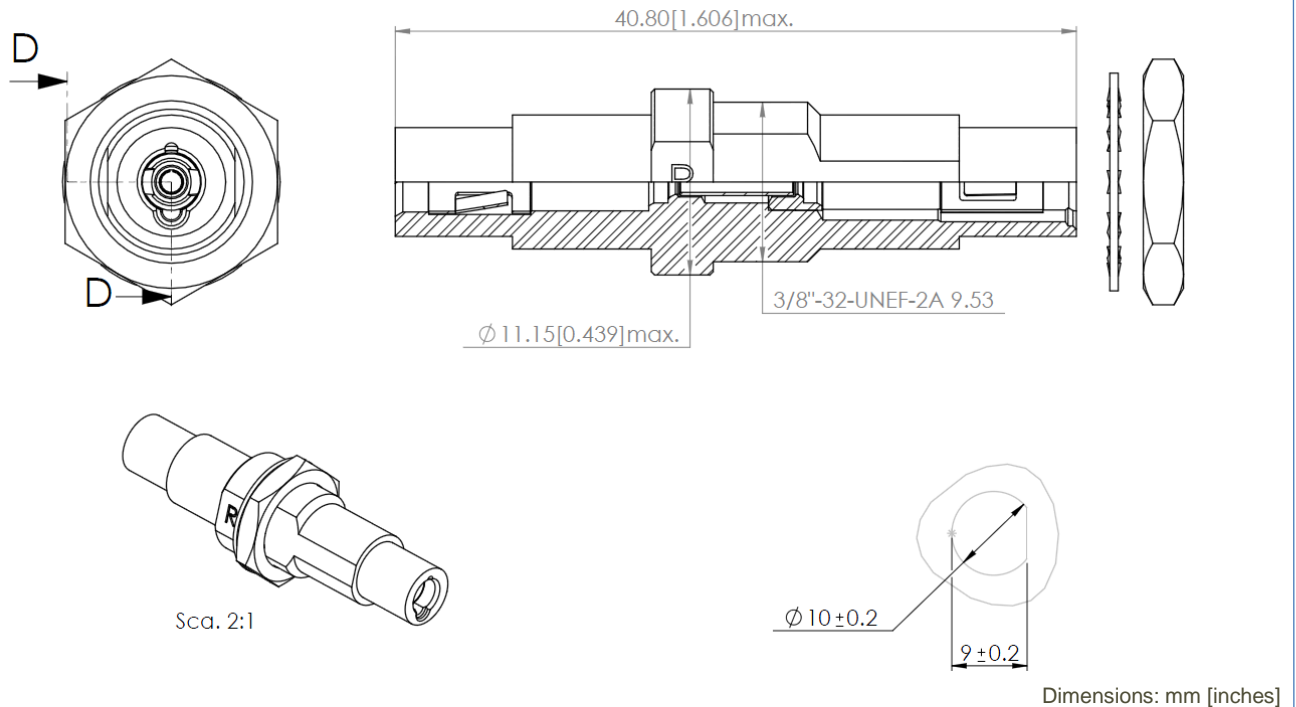


LUXCIS® - LUXCIS® SINGLEMODE PC SIMPLEX BULKHEAD ADAPTOR



GENERAL

Type: Adaptor LuxCis® - LuxCis® Single Mode PC simplex Bulkhead feedthrough

Contact: LuxCis® ARINC 801 fiber optic contact
PC Single Mode Zirconia ferrule Ø1.25mm

Insertion/extraction: Use the tool 282 515 Standard M81969/14-03.
Refer to 503 08 595 Insertion & extraction procedure.

CHARACTERISTICS (Dependent on cable or fiber construction)

Mechanical:

Endurance : 200 matings

Environmental:

Storage temperature: -40°C / +85°C

Operating temperature: -40°C / +85°C