

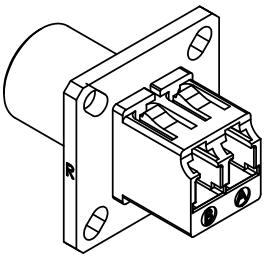
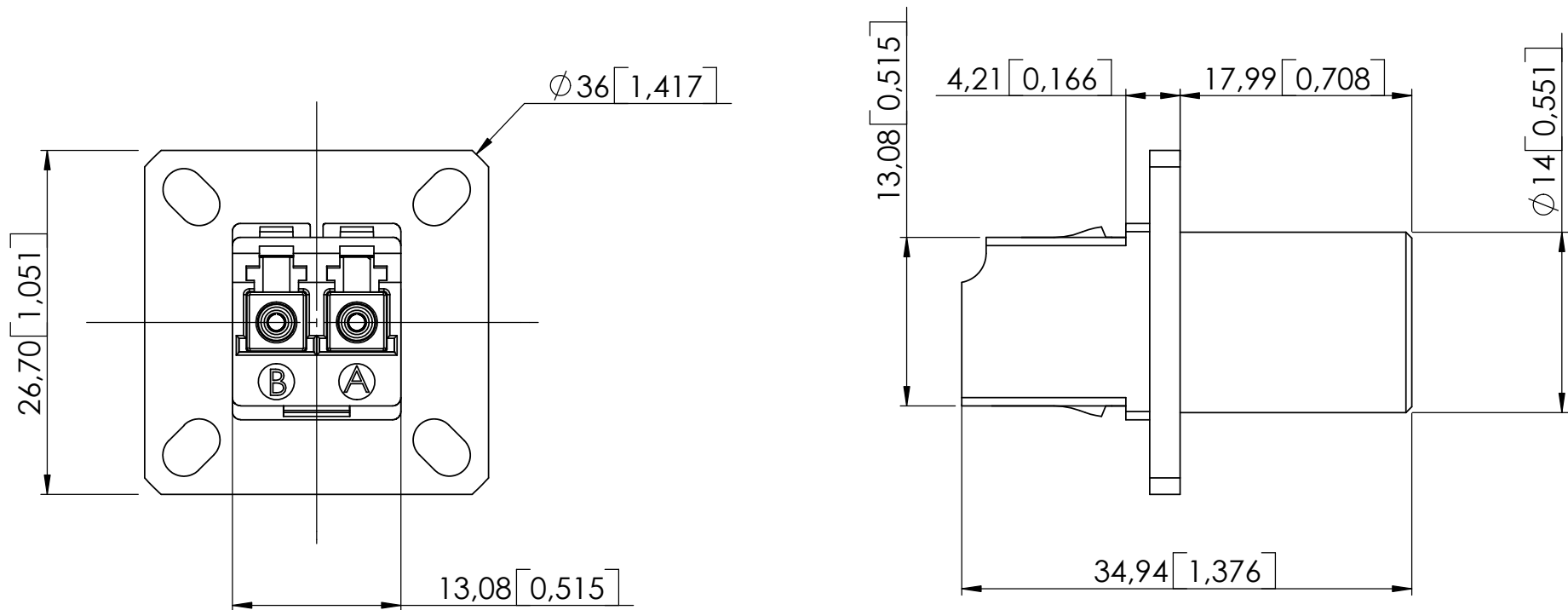


Series  
Adapt.

**LC-LUXCIS ML SINGLEMODE PC DUPLEX ADAPTOR  
SQUARE RECEPTACLE**

Issue:  
Nov.26, 2004

Page  
1/1



Sca: 1:1

**GENERAL**

**TYPE:** Inter series adaptor LC-LUXCIS ML SINGLEMODE PC  
LC : IEC 61754-20 (LC)  
RJ-45 latching system  
LUXCIS : LuxCis ML contact, mono key  
Zirconia alignment sleeve

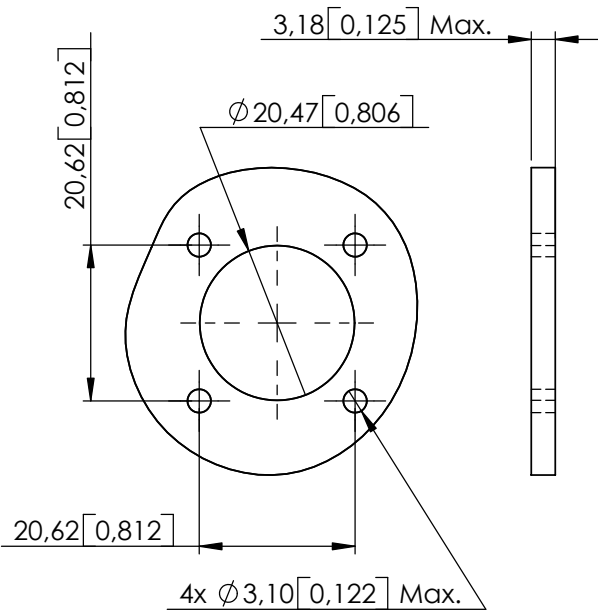
**INSERTION/EXTRACTION TOOL:** 282 546 (standard M81969/1.03)

**PANEL DIMENSIONS:** Conform to standard MIL-DTL-38999K size 11 connector

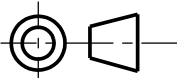
**CHARACTERISTICS (Depending on fiber or cable construction)**

**MECHANICAL:** - Mechanical endurance : 200 mating cycles

**ENVIRONMENTAL:** - Storage temperature -40[°C] to +85[°C]  
- Operating temperature -40[°C] to +70[°C]



DIMENSIONS: mm (inch) -



CREATION

PEN: M030400059A

NAME: PHILIPPEAU S

DATE: April.14,2004

APPR.: MARIE A.

11/26/04

Change design

PHILIPPEAU

MANNEVY

07/07/04

Specified ML singlemode PC duplex and  
remove for loose cable structure

PHILIPPEAU

MANNEVY

Issue

Revisions

Name

Approved

F719058000EN

This information is given as an indication. In the continual goal to improve our products, we reserve the right to make any modifications judged necessary.

4112\_9311