

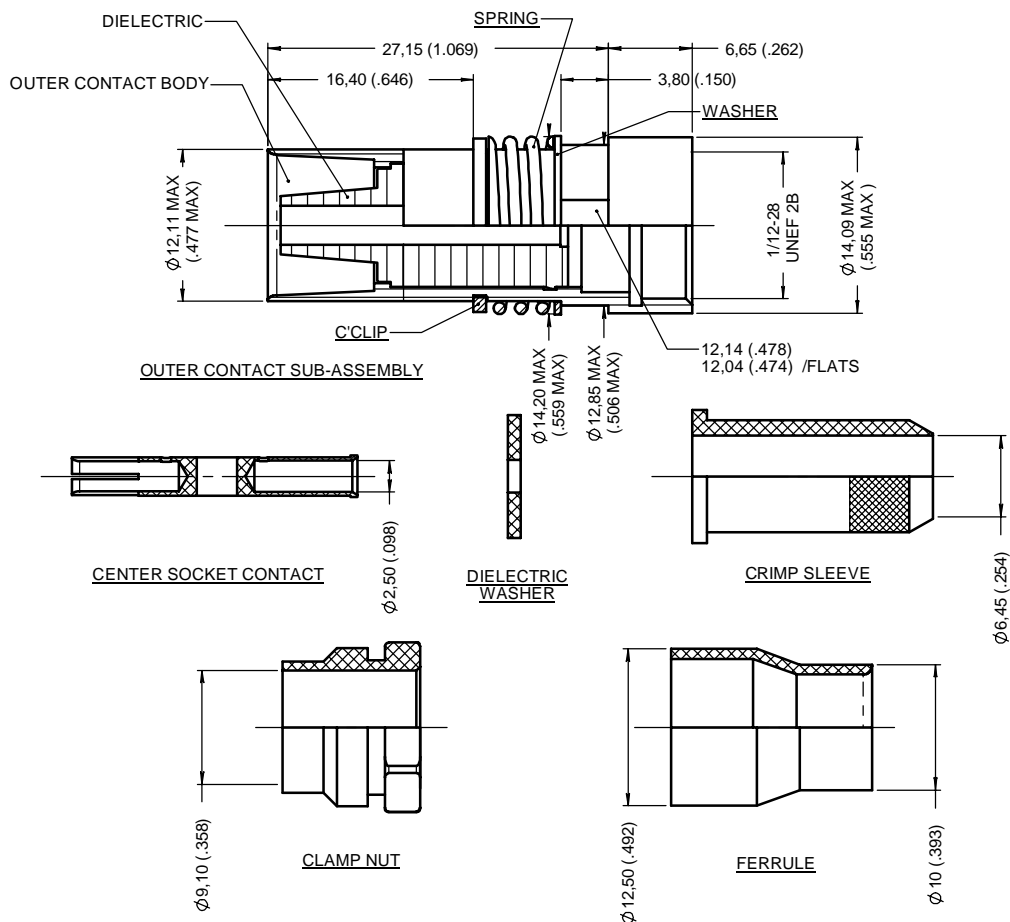


**Series**  
**NSX**

**T-CAS SIZE 1 RF CONTACT**  
**FOR ASN-E0692 WN CABLE (FOR C4 INSERT)**  
**CRIMP TERMINAISON**

**Issue:**  
**APRIL 07, 2004**

**Page**  
**1/1**



**WIRING INSTRUCTIONS: SEA DRAWING RP6176**

**MATERIAL:**

- OUTER CONTACT BODY AND CENTER CONTACT: BERYLLIUM COPPER PER ASTM-B-196
- DIELECTRIC AND DIELECTRIC WASHER: PTFE PER ASTM-D-1710 OR EQUIVALENT
- CRIMP SLEEVE: BRASS PER ASTM-B-16 / B-16M
- FERRULE: BRASS PER ASTM B 453/B453 M
- CLAMP NUT: COPPER ALLOY
- SPRING, C'CLIP AND WASHER: STAINLESS STEEL PER SAE-AMS 5688

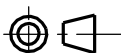
**FINISH:**

- OUTER CONTACT BODY, CRIMP SLEEVE, CENTER CONTACT, CLAMP NUT AND FERRULE: PLATING .00005 INCH OF GOLD PER MIL-G-45204 TYPE I OR II GRADE C OR D CLASS 1 OVER NICKEL QQ-N-290
- WASHER: PASSIVATED
- C'CLIP: NICKEL PROTECTED

**ELECTRICAL CHARACTERISTICS:**

- IMPEDANCE : 50 OHMS
- DIELECTRIC WITHSTANDING VOLTAGE : 1500 V

**DIMENSIONS : Inch -**



**CREATION**

**PEN: M030004070A**

**NOM: MONDOT JC.**

**DATE: APR 07, 04**

**APPR.: LAHOREAU C**

**Issue**

**Revisions**

**Name**

**Approved**

**620119105EN**