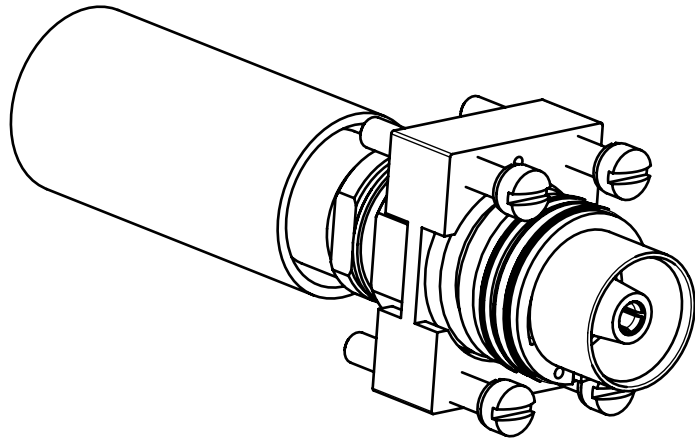


Series
NSX

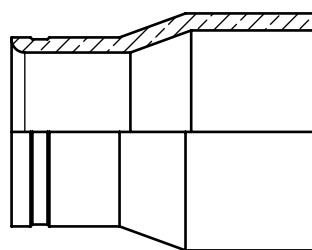
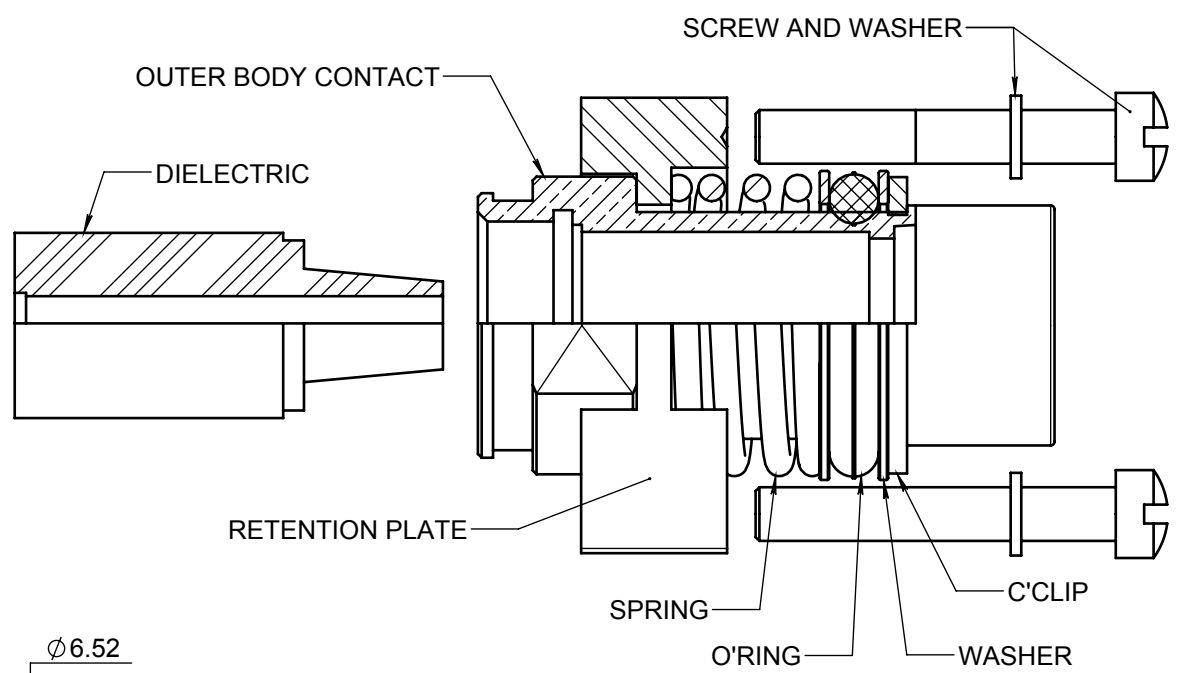
ENVIRONMENTAL SIZE 1 CRIMP COAXIAL SOCKET CONTACT
FOR ASN-E0406 WD AND ASN-E0692 WN CABLES

Issue:
July 03, 2013

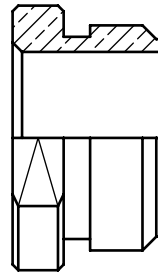
Page
1/1



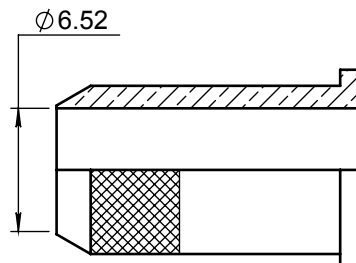
OUTER CONTACT AND RETENTION
PLATE SUB ASSEMBLY



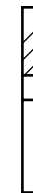
FERRULE



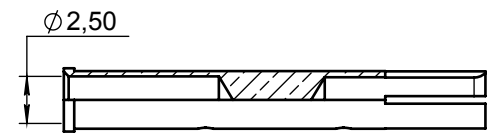
CLAMP NUT



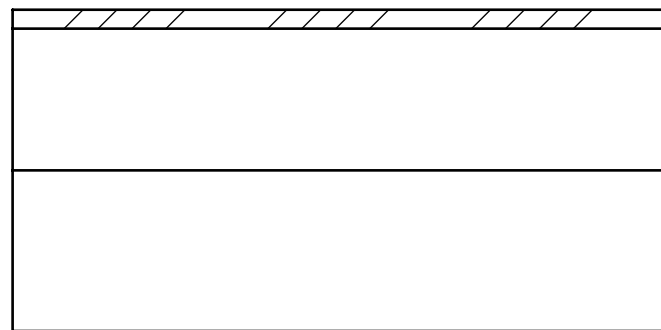
CRIMP SLEEVE



DIELECTRIC
WASHER



CENTER SOCKET CONTACT



SHRINKABLE SLEEVE

MATERIAL:

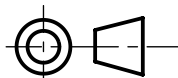
- OUTER CONTACT BODY : BRASS PER ASTM-B-16 / B-16M
- DIELECTRIC AND DIELECTRIC WASHER : PTFE PER ASTM-D-1710 OR EQUIVALENT
- CRIMP SLEEVE : BRASS PER ASTM-B-16 / B-16M
- CENTER CONTACT : BERYLLIUM COPPER PER ASTM-B-196
- FERRULE : BRASS PER ASTM B 453/B453 M
- CLAMP NUT : COPPER ALLOY
- SPRING, C'CLIP, SCREWS AND WASHERS : STAINLESS STEEL PER SAE-AMS 5688
- O'RING SEAL : FLUOROSILICONE PER SAE AMS R 25988

FINISH:

- OUTER CONTACT BODY, CRIMP SLEEVE, CENTER CONTACT, CLAMP NUT AND FERRULE:
PLATING .00005 INCH OF GOLD PER MIL-G-45204 TYPE I OR II GRADE C OR D CLASS 1
OVER NICKEL QQ-N-290
- WASHER: PASSIVATED
- C'CLIP: NICKEL PROTECTED

WIRING INSTRUCTIONS: SEE RP2799

DIMENSIONS : mm (inch are given for information only)



CREATION				
PEN: 2009-02-2678				
NOM: LEGENDRE T.				
DATE: Feb. 18, 2009	July 03, 13	Modification of the crimp sleeve inner diameter	Legendre T.	Dupuis V.
APPR.: BROCHET L.	Feb. 25, 10	Updated ferrule with identification groove see FEP09-13	Legendre T.	Brochet L.
	Issue	Revisions	Name	Approved

620108003EN

RADIAL PROPRIETARY INFORMATION

This information is given as an indication. In the continual goal to improve our products, we reserve the right to make any modifications judged necessary.

4112_9311