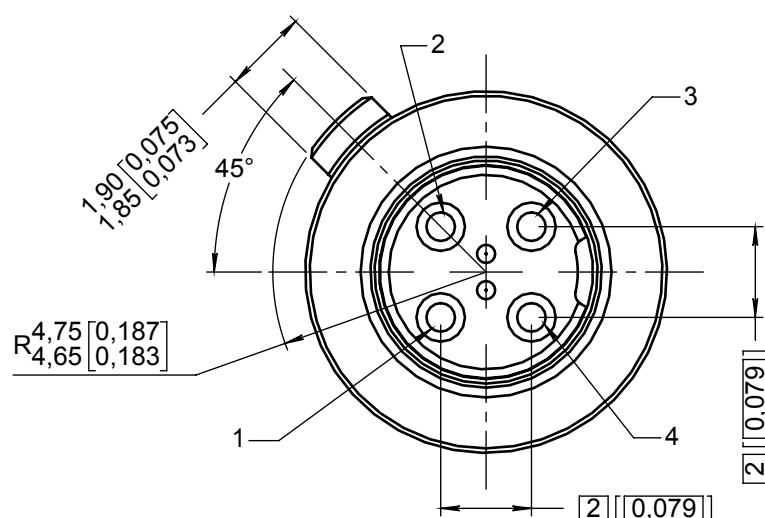
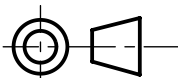


ENGAGING FACE



DIMENSIONS : mm (inch are given for information only)



Estimated weight : 4,70 g

CREATION PEN: M010400049G NOM: MACARI JP. DATE: Mar. 27, 2002 APPR.: /	Feb. 27, 18	Diameter of spacer corrected	Ramos D.	Zuniga F.
	Jul. 09, 15	Added PIC E50424 cable	Pecault B.	Branjonneau V.
	Apr. 13, 15	Added cable CEEW0005-2PF870, page 2 and table 1	Zuniga F.	Ramos D.
	Mar. 09, 15	Added MICT0400005 for ABS1503KL24 cable	Branjonneau V.	Legendre T.
	Sep. 05, 12	Updated way of marking	Legendre T.	Dupuis V.
	Dec. 16, 11	Added MPX serie	Legendre T.	Dupuis V.
	Jun. 09, 09	Added Thermax cable	Macari JP.	Legendre T.
	Issue	Revisions	Name	Approved

MATERIAL:

- OUTER, CENTER CONTACTS AND FERRULE: COPPER ALLOY
- INSULATOR : PTFE PER ASTM-D-1710 OR EQUIVALENT
- SEALING BOOT : THERMOPLASTIC PER ASTM D 5205 AND FLUOROSILICONE PER SAE-AMS-R-25988
- SPACER : THERMOPLASTIC PER ASTM D 5205

FINISH:

- ALL METAL PARTS:
PLATING .00005 INCH OF GOLD PER MIL-G-45204 TYPE I OR II
GRADE C OR D CLASS 1 OVER NICKEL PER QQ-N-290

EXTRACTION TOOL:

- M81969/28.03 (RADIAL: 282 549 001) OR M81969/14-06

TABLE 1	
CABLES	WIRING INSTRUCTION
ABS1503KL24	MICT0400005
ABS1503KD	RP55178
ABS0972	
GSC01-81869-01	
THERMAX T956-4T200	
CEEW0005-2PF870	
PIC E50424	