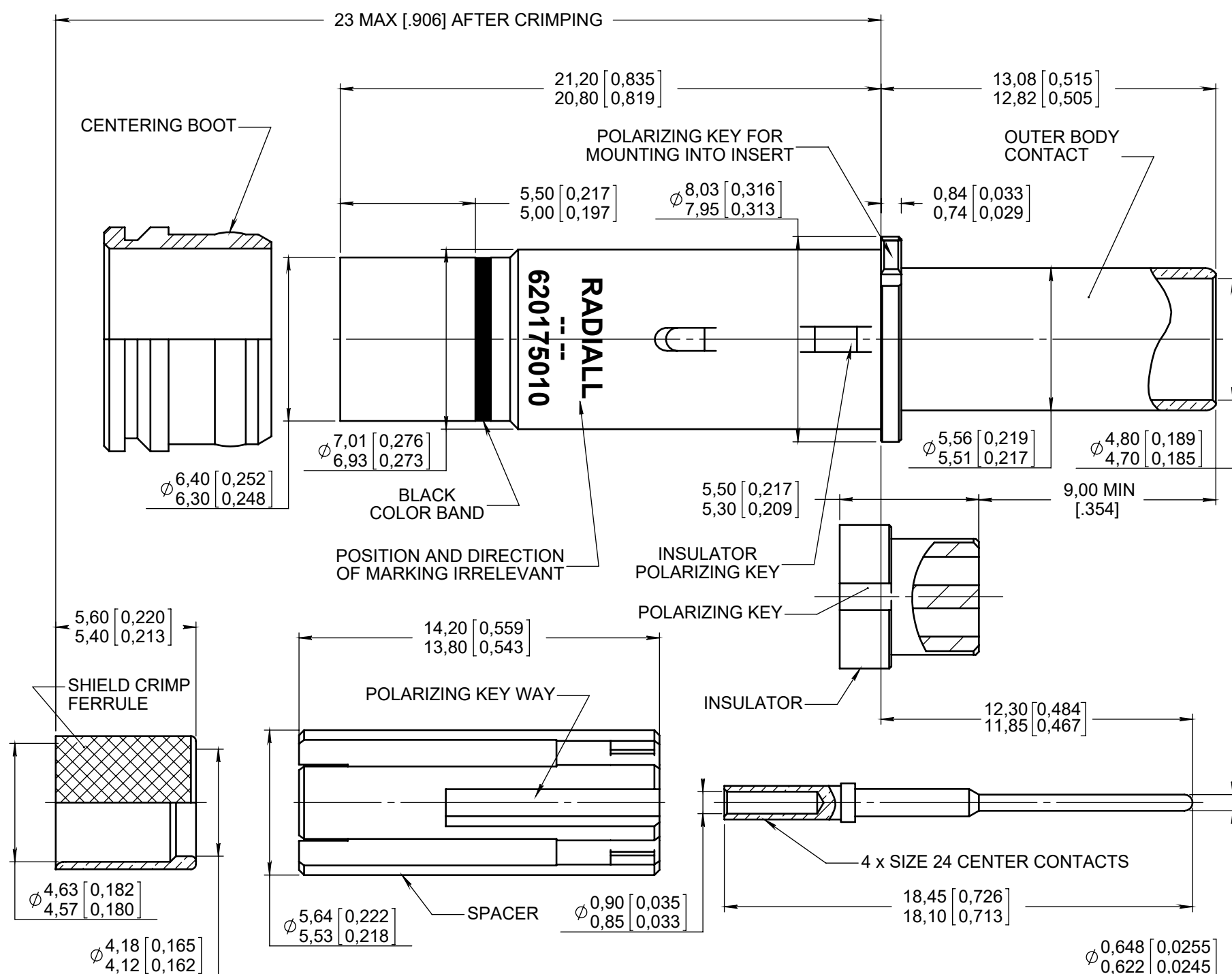
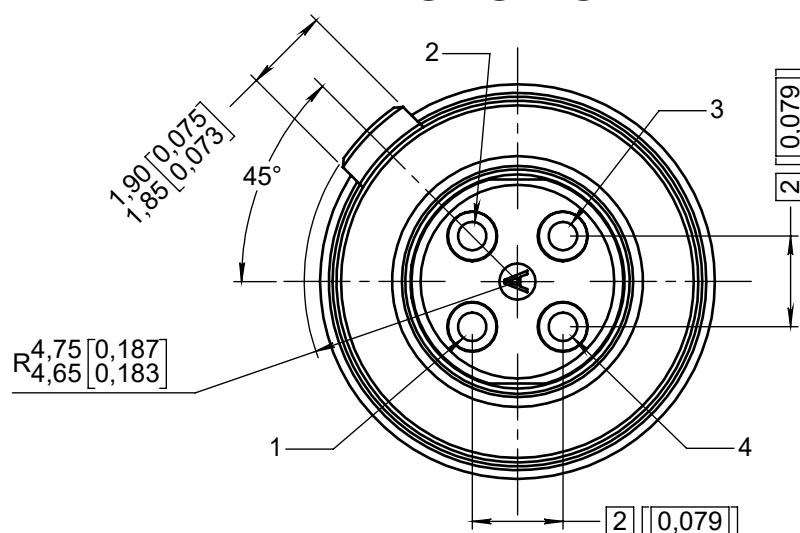


Series
NSX

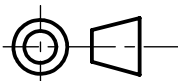
NON ENVIRONMENTAL SIZE 8 QUADRAX PIN CONTACT

Issue:
Sep. 22, 2023Page
1/2

ENGAGING FACE



DIMENSIONS : mm (inch are given for information only)



Estimated weight : 4.50 g

PEN: M000004358B NOM: B VAN DEN DATE: April 17, 2001 APPR.: /	4112_9311	CREATION	Sep. 22, 23	Dimensions correction	Ramos D.	Legendre T.
			Dec. 23, 22	Modification of front insulator per FEP 21-01	CERRUTI JB	LEGENBRE T.
			May 11, 20	Dimensions updated	Ramos D.	Legendre T.
			Jan. 06, 16	Date code added on the outer body marking	PECAULT B.	Legendre T.
			July 09, 15	Added PIC E50424 cable	PECAULT B.	Legendre T.
			Apr. 13, 15	Added cable CEEW0005-2PF870, page 2 and table 1	Zuniga F.	Ramos D.
			Mar. 09, 15	Added MICT0400005 for ABS1503KL24 cable	Branjonneau V.	Legendre T.
			Issue	Revisions	Name	Approved

620175010EN

RADIAL PROPRIETARY INFORMATION

MATERIAL :

- OUTER, CENTER CONTACTS AND FERRULE : COPPER ALLOY
- INSULATOR AND CENTERING BOOT : PTFE PER ASTM-D-1710
LCP PER ASTM-D-5138
OR EQUIVALENT
- SPACER : THERMOPLASTIC PER ASTM D 5205

FINISH :

- ALL METAL PARTS :
PLATING .00005 INCH OF GOLD PER MIL-G-45204 TYPE I OR II
GRADE C OR D CLASS 1 OVER NICKEL PER QQ-N-290

EXTRACTION TOOL :

- M81969/28.03 (RADIAL : 282 549 001) OR M81969/14-06

TABLE 1	
CABLES	WIRING INSTRUCTION
ABS1503KL24	MICT0400005
ABS1503KD	RP55178
ABS0972	
GSC01-81869-01	
THERMAX T956-4T200	
CEEW0005-2PF870	
PIC E50424	