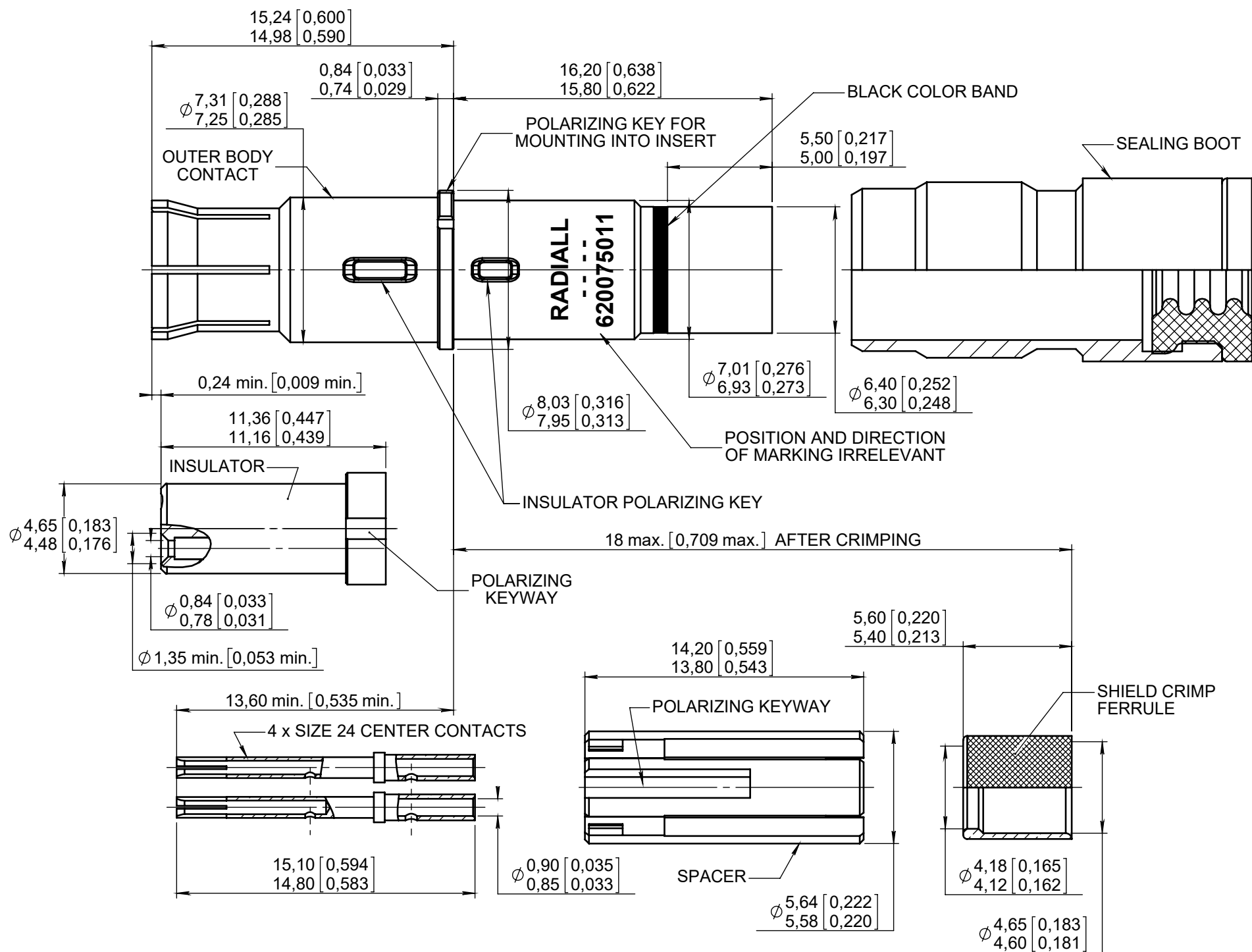
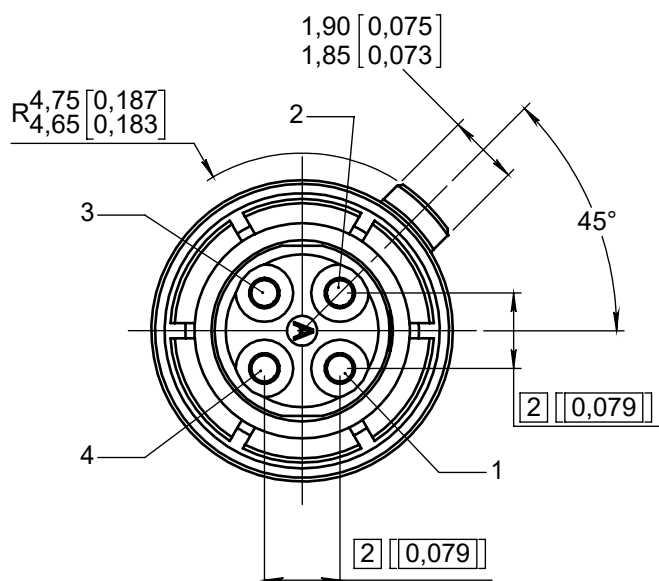


Series
NSX

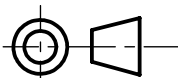
ENVIRONMENTAL SIZE 8 QUADRAX SOCKET CONTACT

Issue:
July 18, 2022Page
1/2

ENGAGING FACE



DIMENSIONS : mm (inch are given for information only)



Estimated weight : 4,85 g

CREATION PEN: M010400049G NOM: MACARI DATE: March 27, 2004 APPR.: /	July 18, 22	Modification of front insulator per FEP 21-01	Cerruti JB.	Legendre T.
	July 09, 15	Added PIC E50424 cable	PECAULT B.	Branjonneau V.
	Apr. 13, 15	Added cable CEEW0005-2PF870, page 2 and table 1	Zuniga F.	Ramos D.
	Mar. 09, 15	Added MICT0400005 for ABS1503KL24 cable	Branjonneau V.	Legendre T.
	Sept. 05, 12	Updated way of marking	Legendre T.	Dupuis V.
	Dec. 16, 11	Added "MPX" serie	Legendre T.	Dupuis V.
	June 08, 09	Added Thermax cable	Macari JP.	Legendre T.
	Issue	Revisions	Name	Approved

620075011EN

NON CONTRACTUAL SHAPES

RADIALl PROPRIETARY INFORMATION

MATERIAL:

- OUTER AND CENTER CONTACTS: COPPER ALLOY
- FERRULE: BRASS PER QQ-B-626
- INSULATOR : PTFE PER ASTM-D-1710
OR LCP PER ASTM-D-5138
OR EQUIVALENT
- SEALING BOOT: THERMOPLASTIC PER MIL-P-46184 AND FLUOROSILICONE PER MIL-R-25988 OR PER ZZ-R-765
- SPACER : THERMOPLASTIC PER ASTM D 5205

FINISH:

- ALL METAL PARTS:
PLATING .00005 INCH OF GOLD PER MIL-G-45204 TYPE I OR II GRADE C OR D CLASS 1 OVER NICKEL PER QQ-N-290

EXTRACTION TOOL:

- M81969/28.03 (RADIAL: 282 549 001) OR M81969/14-06

TABLE 1	
CABLES	WIRING INSTRUCTION
ABS1503KL24	MICT0400005
ABS1503KD	RP55178
ABS0972	
GSC01-81869-01	
THERMAX T956-4T200	
CEEW0005-2PF870	
PIC E50424	