



RADIALL[®]
MULTIPIN CONNECTOR

SALES DRAWING

618 803 001

Edition : MPX99005 LF

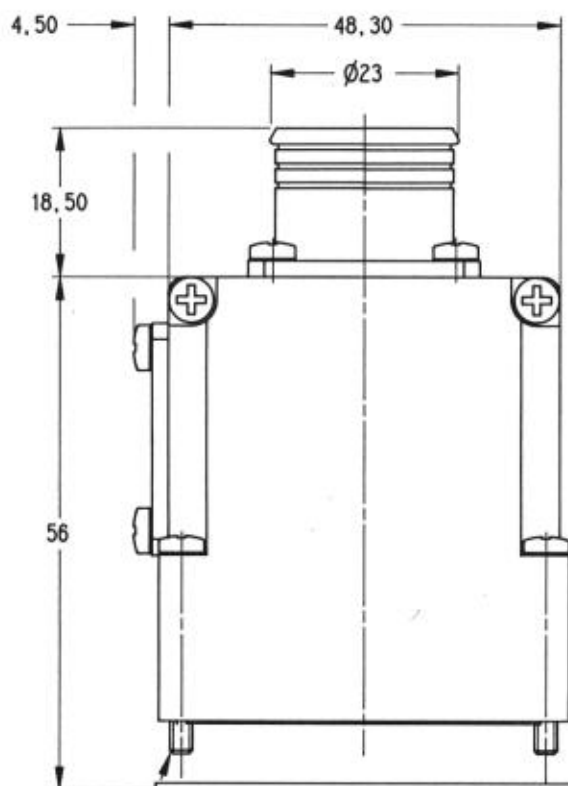
Page

SERIE : MPX

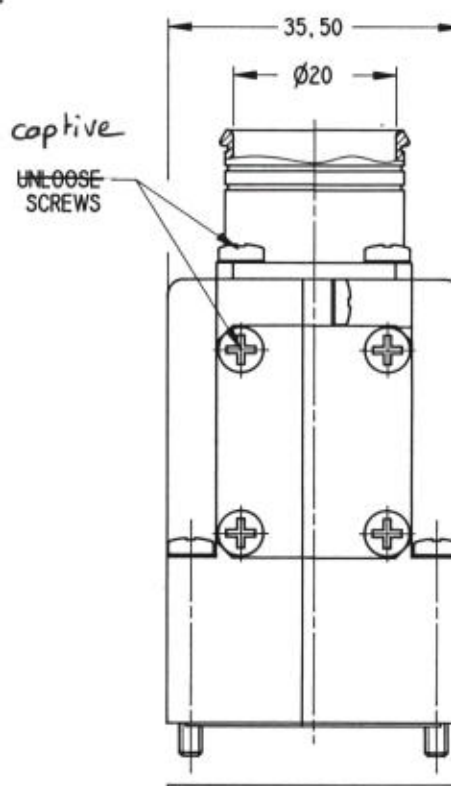
1 / 1

PEN :

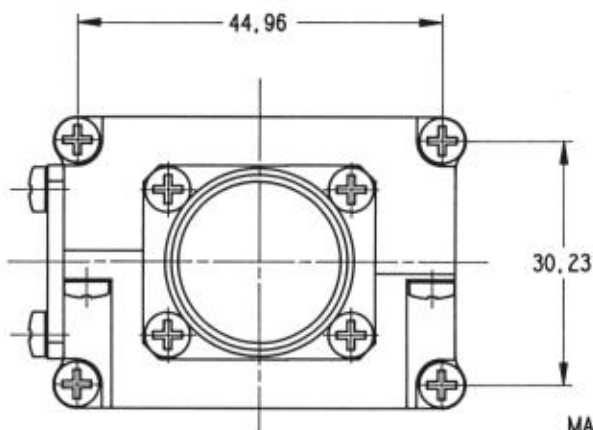
TITLE : BACK SHELL FOR A, C AND E INSERT CAVITY
20 MM DIA CABLE ENTRY



4.40 UNC 2A SCREW (4 PLCS)
COUPLING TORQUE: 7daN/cm



CONDUCTIVE SEAL P/N 574 00 003
TO BE REPLACED BY A NEW ONE
AFTER TEN DISCONNECTINGS



MATERIAL AND FINISH:
BACK SHELL: ALUMINUM ALLOY
YELLOW CHROMATE CADMIUM PLATED OVER NICKEL UNDERPLATE
SCREWS AND WASHERS: CORROSION RESISTANT MATERIAL

NOTA: BACK SHELL IS PACKED UNASSEMBLED

C	REDRAWN	28.1.92	AB
B	ADDED UNLOOSE SCREWS; 18,50 was 14,50; 36 was 35,50; REDRAWN BY CAD	30.9.91	LF
IND	MODIFICATIONS	DATE	VISA
Creation	Date: 24.4.91	 101, rue Philibert Hoffmann, Z.I. Ouest 93118 ROSNY/BOIS Cedex (France) Tél.: (1) 49 35 35 35 Fax.: (1) 48 54 63 63 Télex: RADIA 235220	
Up-date	Date: 28.1.92		

This information is given as an indication. In the continual goal to better our products, we reserve the right to bring any modifications judged necessary.