

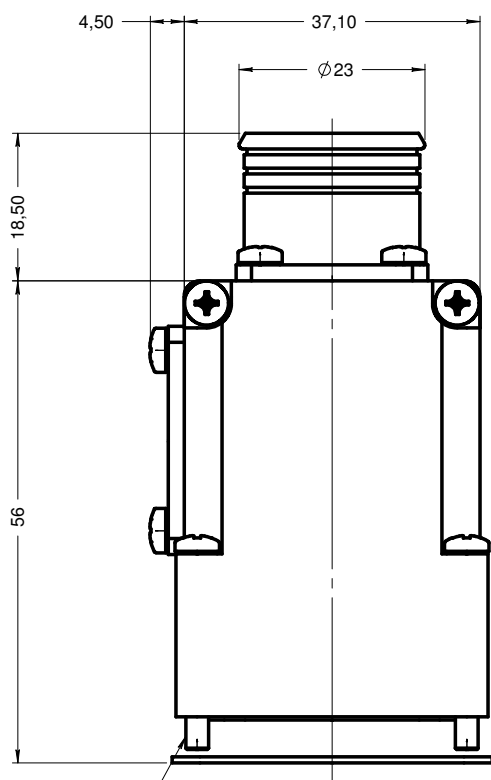


Series  
MPX

BACK SHELL FOR B, D AND F CAVITY  
20 MM DIA CABLE ENTRY

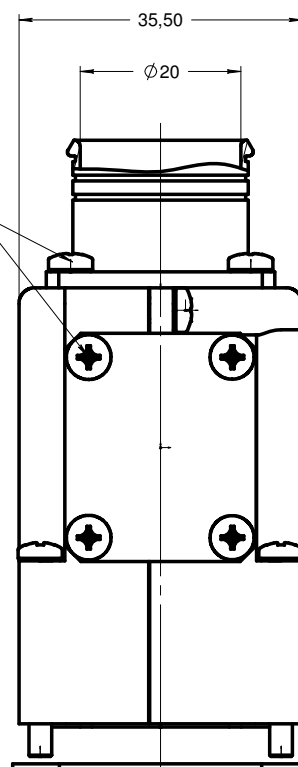
Issue:  
Oct 13. 2004

Page  
1/1

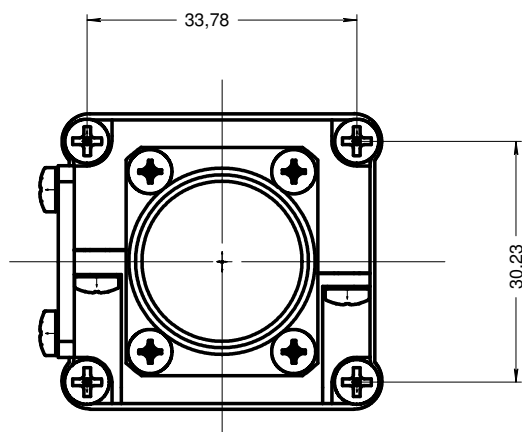


4-40 UNC 2A SCREWS (4 PCS)  
COUPLING TORQUE: 7 daN/cm

UNLOOSE SCREWS



CONDUCTIVE SEAL  
TO BE REPLACED BY A NEW ONE  
AFTER TEN DISCONNECTINGS



MATERIAL AND FINISH:

- BACK SHELL: ALUMINIUM ALLOY  
YELLOW CHROMATE CADMIUM PLATED OVER NICKEL UNDERPLATE
- SCREWS AND WASHERS: CORROSION RESISTANT MATERIAL

WEIGHT : 68 GRAMMES

NOTA: BACK SHELL IS PACKED UNASSEMBLED

DIMENSIONS : mm (inch) -



CREATION

PEN: M96104813A

NOM: FALETTI

DATE: Apr 24. 1991

APPR.: .

Issue	Revisions	Name	Approved
Oct 13. 04	Redrawn. Add the weight	Legave	Lahoreau
Jan 28. 92	Redrawn	Baldyrou	.
Sept 30. 91	Added : Unloose screws, 18.50 was 14.50, 36 was 35.50 Redrawn by CAD	Faletti	.

618802001EN