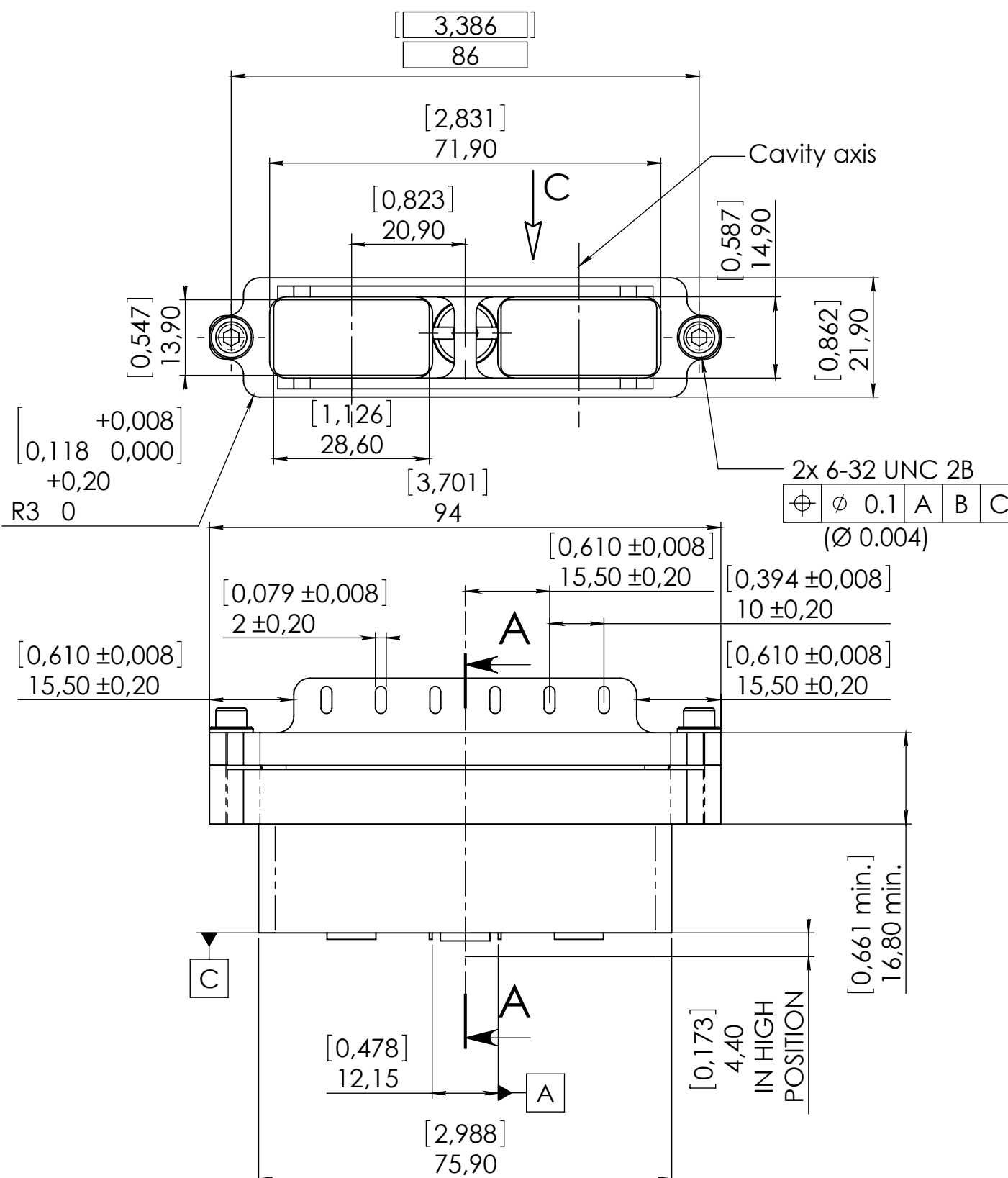


Series
EPXB

SIZE 2 E.M.I. BACKSHELL

Issue:
Nov. 28, 2017

Page
1/1



MATERIAL AND FINISH :

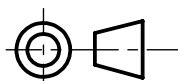
BACKSHELL : ALUMINUM ALLOY - ELECTROLYTIC NICKEL OVER ELECTROLESS NICKEL
CLAMP: ALUMINUM ALLOY - ELECTROLYTIC NICKEL OVER ELECTROLESS NICKEL
M8 CAPTIVE STAMPING SCREW: STAINLESS STEEL
WASHER: STAINLESS STEEL
6-32 UNC FIXTURE SCREW: STAINLESS STEEL

6-32 UNC FIXTURE SCREW LOCKING TORQUE: 0,70 Nm to 0,80 Nm
M8 CAPTIVE STAMPING SCREW LOCKING TORQUE: 1,2 Nm mini

TOOL:

RADIALL P/N: 282 664 OR 282 665 TO FIX THE FIXTURE SCREW

DIMENSIONS : mm (inch are given for information only)



Estimated weight : 80 g

CREATION				
PEN: M99 0400 059B				
NOM: Geay S.				
DATE: June 28, 2001				
APPR.: /				
Nov. 28, 17	Corrected 6-32 fixture screw locking torque	Legendre T	Legloahec Y	
Issue	Revisions	Name	Approved	

617925056EN

RADIALL PROPRIETARY INFORMATION

This document contains proprietary information and such information shall not be disclosed to any third party for any purpose whatsoever or used for manufacturing purposes without prior written agreement from RADIALL. This information is given as an indication. In the continual goal to improve our products, we reserve the right to make any modifications judged necessary.

4112_9311