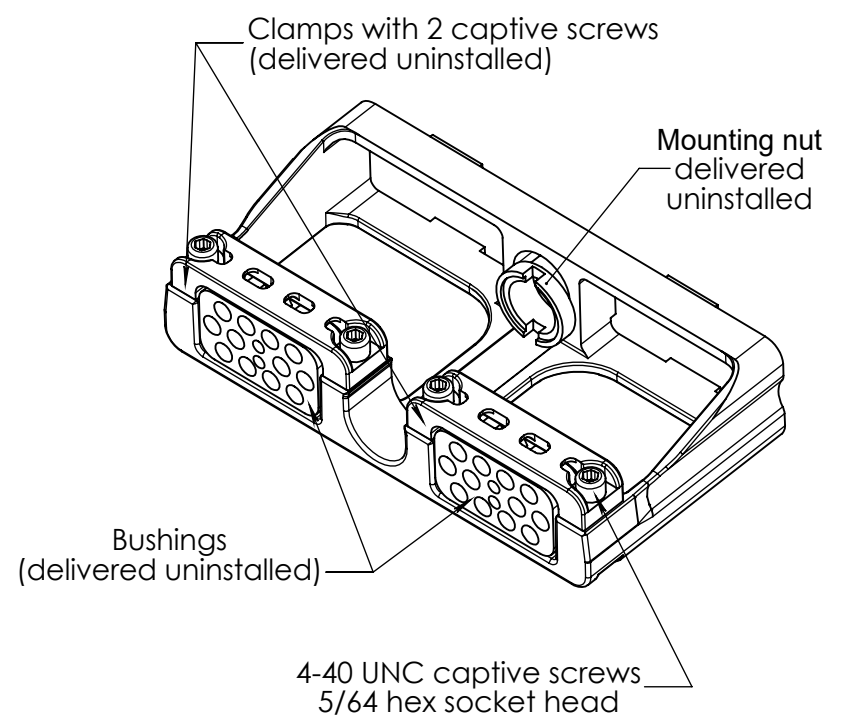
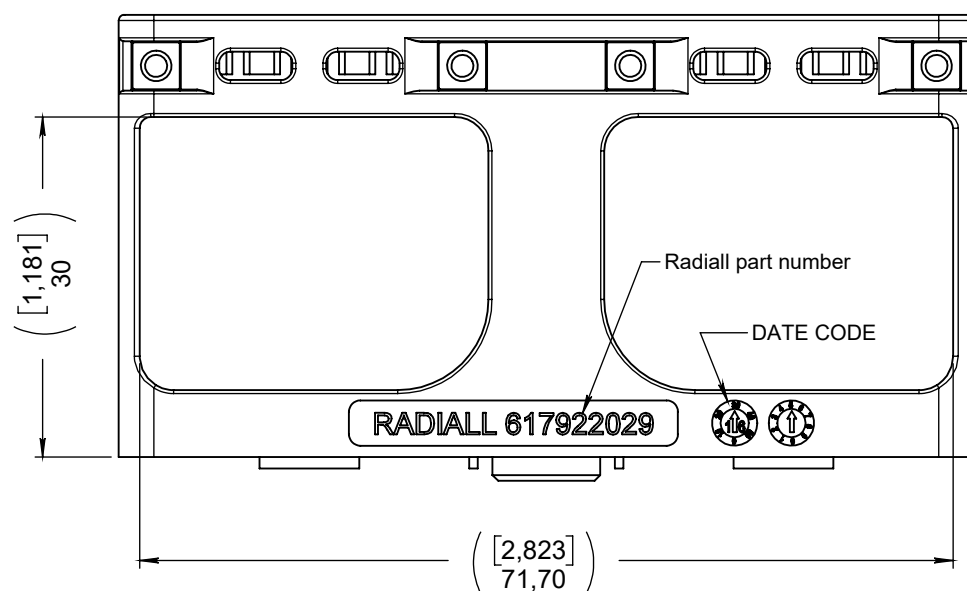
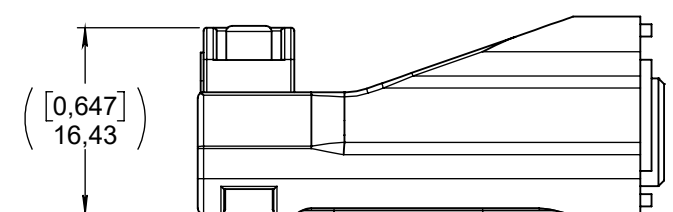
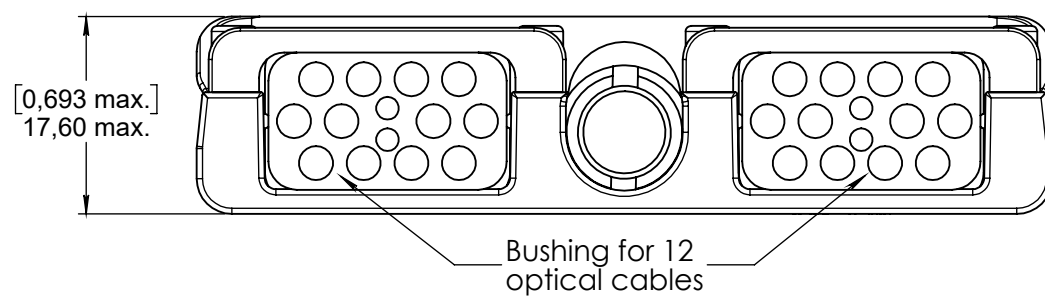
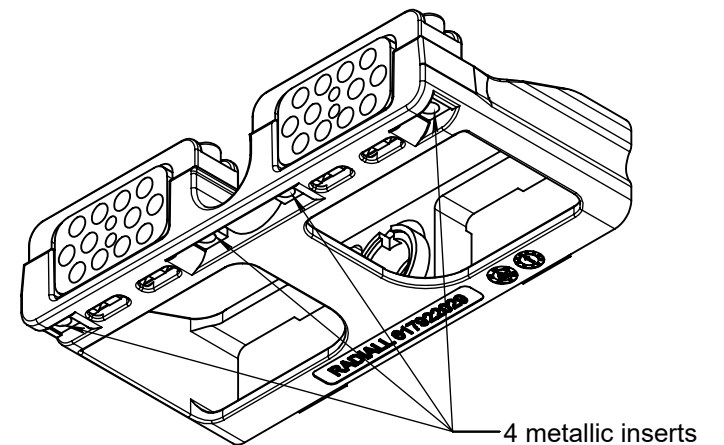
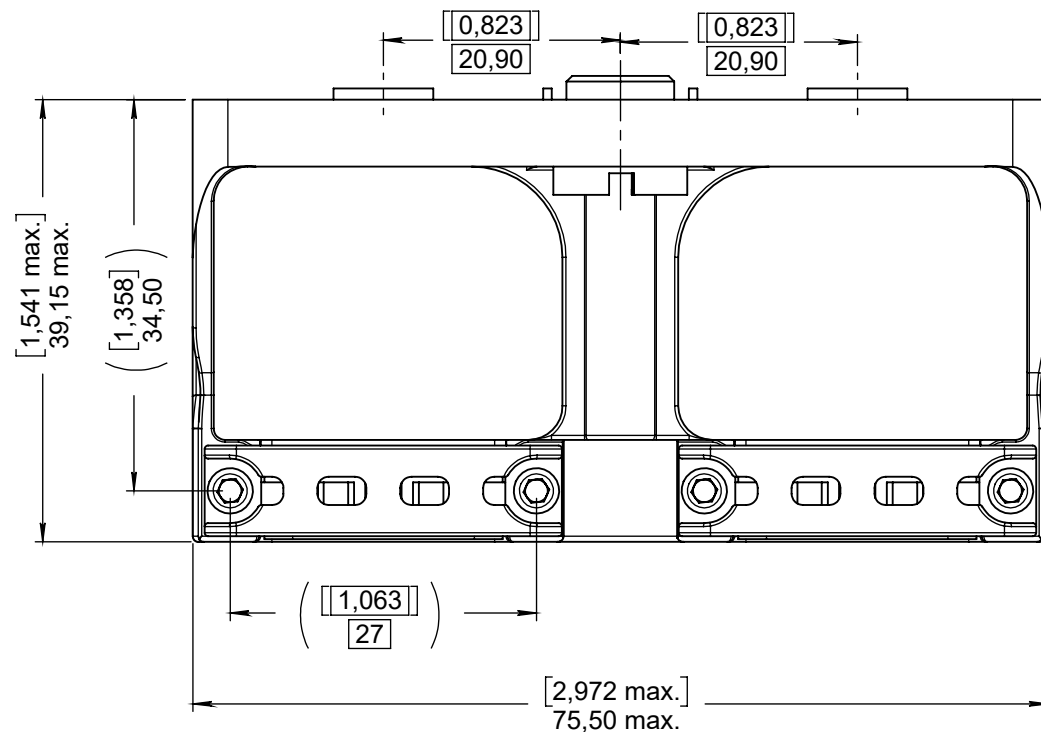


**Series**  
**EPXB**

**EPXB2 STRAIGHT FIBER OPTIC BACKSHELL  
FITTED WITH BUSHING FOR OPTICAL APPLICATION**

**Issue:**  
**Dec. 08, 2017**

**Page**  
**1/1**



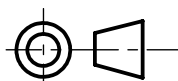
**MATERIALS:**

- BACKSHELL & CLAMP: High grade thermoplastic,
- METALLIC INSERTS: Copper nickel zinc alloy,
- SCREWS & MOUNTING NUT : Stainless steel,
- BUSHING: Fluorosilicone elastomer.

**NOTES :**

- Strain relief delivered with the clamps, their captive screws, and the bushings, uninstalled.
- 4-40 captive screws locking torque: 0.50±0.10Nm.
- Optical cable diameter range compatibility : Ø2.62mm [0.103in]- Ø3.18mm [0.126in]
- Remove the straight fiber optic backshell for cable or insert maintenance.
- Refer to MIBS1700025 for mounting instruction.

**DIMENSIONS : mm (inch are given for information only)**



Estimated weight : 19,50 g

<b>CREATION</b>				
<b>PEN: 20164777-10A</b>				
<b>NOM: MOUTAULT W.</b>				
<b>DATE: Mar. 02, 2016</b>	Dec. 08, 17	Updated title and informations	Legendre T.	Surault S.
<b>APPR.: LEGLOAHEC</b>	Apr 14, 17	Cable range added & coupling torque updated	Pailot N.	Legloahec Y
	Issue	Revisions	Name	Approved

617922029EN

**RADIAL PROPRIETARY INFORMATION**