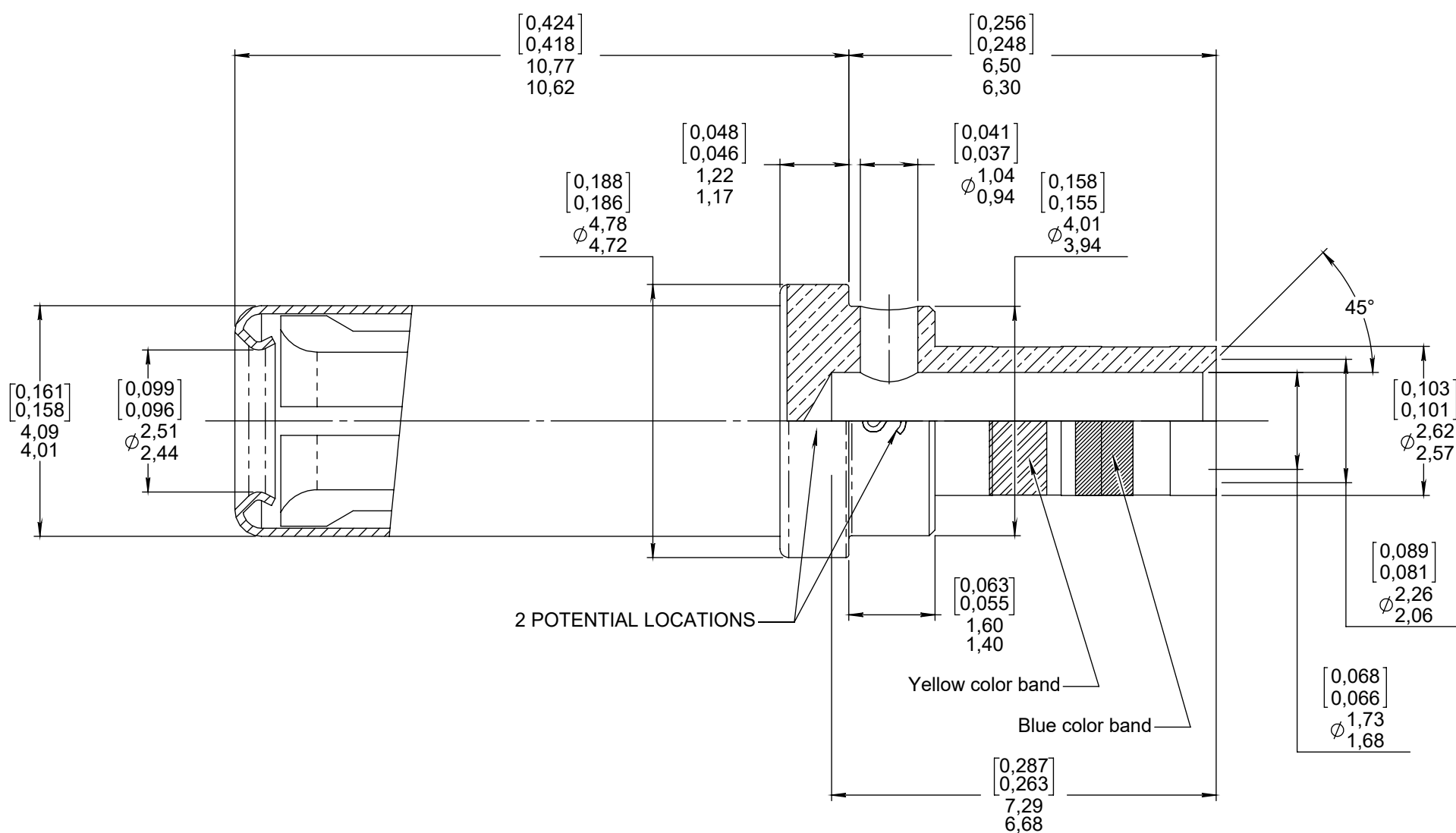


Series  
EPXSIZE 12 CRIMP SOCKET CONTACT  
SIZE REDUCED CRIMP BARRELIssue:  
Nov. 01, 2021Page  
1/1

## MATERIAL:

CONTACT BODY: BERYLLIUM COPPER PER ASTM B 196  
PROTECTION SLEEVE: STAINLESS STEEL PER SAE AMS-5514

## FINISH:

CONTACT BODY: PLATING 0,00005 INCH OF GOLD PER SAE AMS-2422 OVER NICKEL PER SAE AMS-QQ-N-290  
PROTECTIVE SLEEVE: PASSIVATED PER SAE AMS-QQ-P-35

WIRES ACCOMODATED: AWG 16-18-20  
INSULATOR DIAMETER: 0,133 MAX (3,40)  
STRIP LENGHT: 0,236 (6)

CRIMP CONTACT TENSILE REQUIREMENTS USING MIL SPEC TOOLING AND WIRE SPEC  
MIL-W-81381/12 16 GA. 37 LBS (16,5 daN)  
MIL-W-22759/41 16 GA. 50 LBS (22,5 daN)  
M22520/1-01 16 GA. 49 LBS (22 daN)

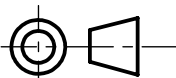
CRIMPED CONTACTS WILL SHOW NO CRACK WHEN INSPECTED PER MIL-C-22520 AT 10X

RADIALL TOOLING RECOMMENDATION  
CRIMPING TOOL: M22520/1-01 (RADIALL 282291)  
SELECTOR POSITION: 6 FOR AWG 16  
5 FOR AWG 18  
4 FOR AWG 20

POSITIONER: M22520/1-02 (RADIALL 282972)

INSERTION/EXTRACTION TOOL: M81969/14-04 (RADIALL P/N: 282549004)

DIMENSIONS : mm (inch are given for information only)



Estimated weight : 1 g

## CREATION

PEN: M980400006A

NOM: ARNAULT F.

DATE: Feb. 23, 1998

APPR.:

Nov. 01, 21

Updated dimension: 1.3/1.5 [0.051/0.059] is now 1.45/1.60 [0.057/0.063]. Correction on "S" marking location.

Lopez C.

Weihs H.

Jan. 25, 08

Redrawn and dimensions modified and ins/ext tool updated

Pailot N

Pessard M.

Jan. 12, 99

2 "S" potential locations added. Syntax error: crack was creak.

Garcia L

Giet L

Apr. 16, 98

Updated from the detail drawing  
Ø0.099/0.096 and Ø0.157/0.155 added. Modified further to  
typing error Ø0.089/0.081 and Ø0.068/0.081

Valgresy B

Giet L

Issue

Revisions

Name

Approved

617351EN

RADIALL PROPRIETARY INFORMATION